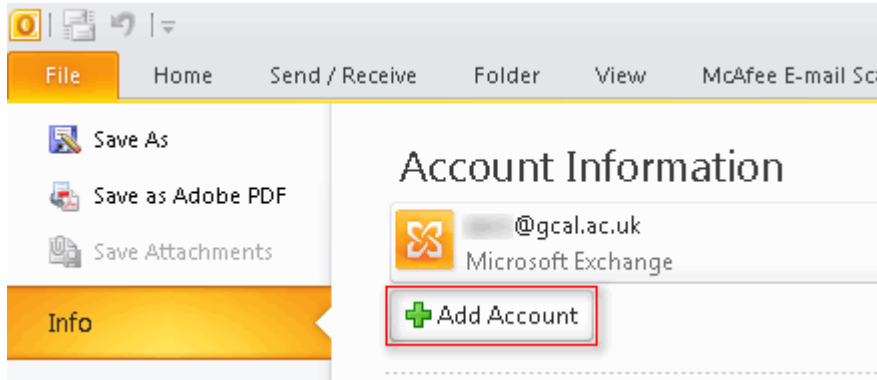
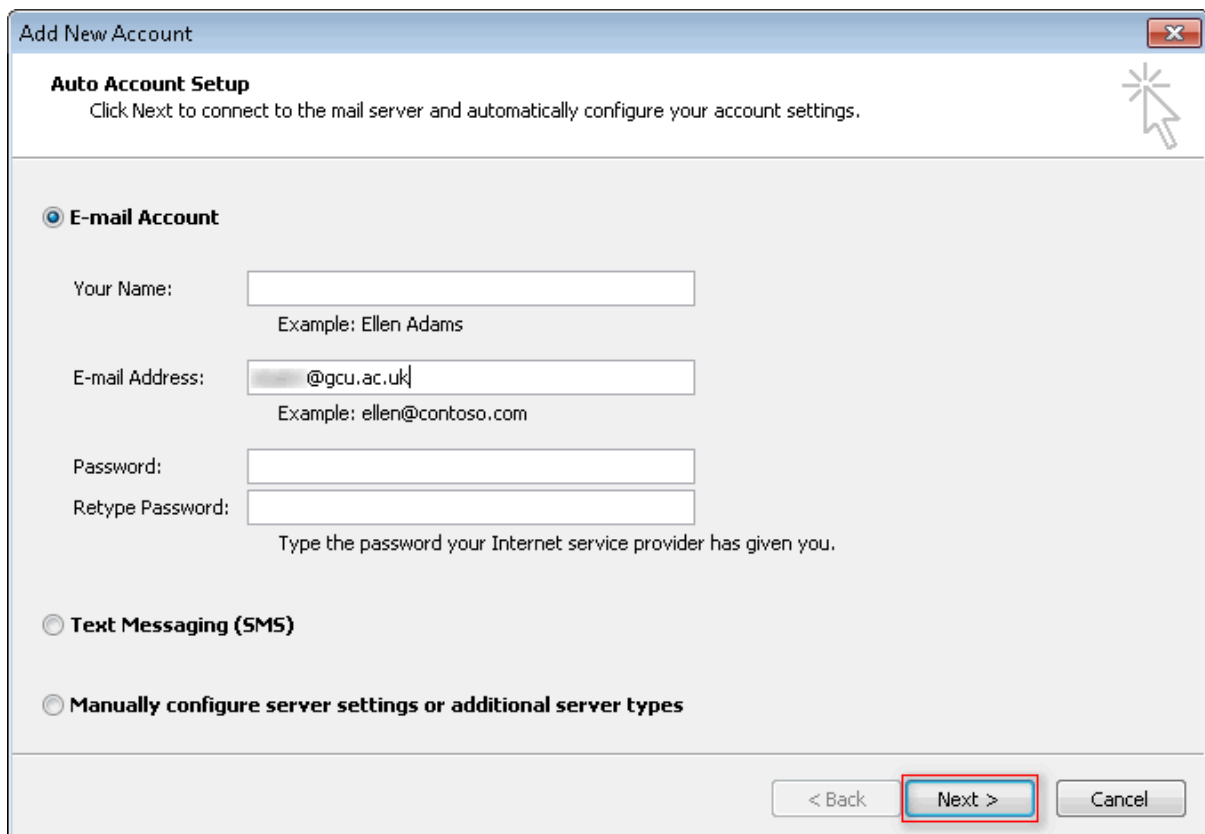


Add Additional Account - Outlook 2010

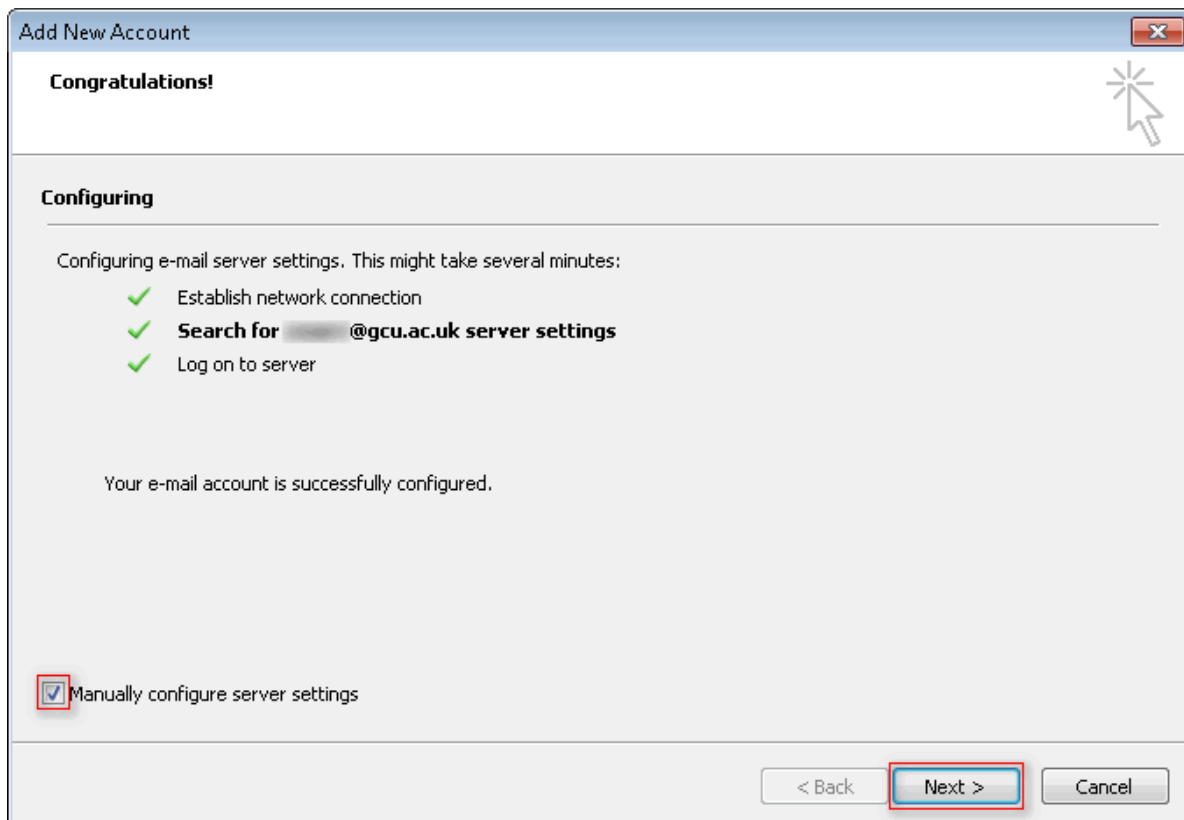
Step1 Click the File tab and click Add Account



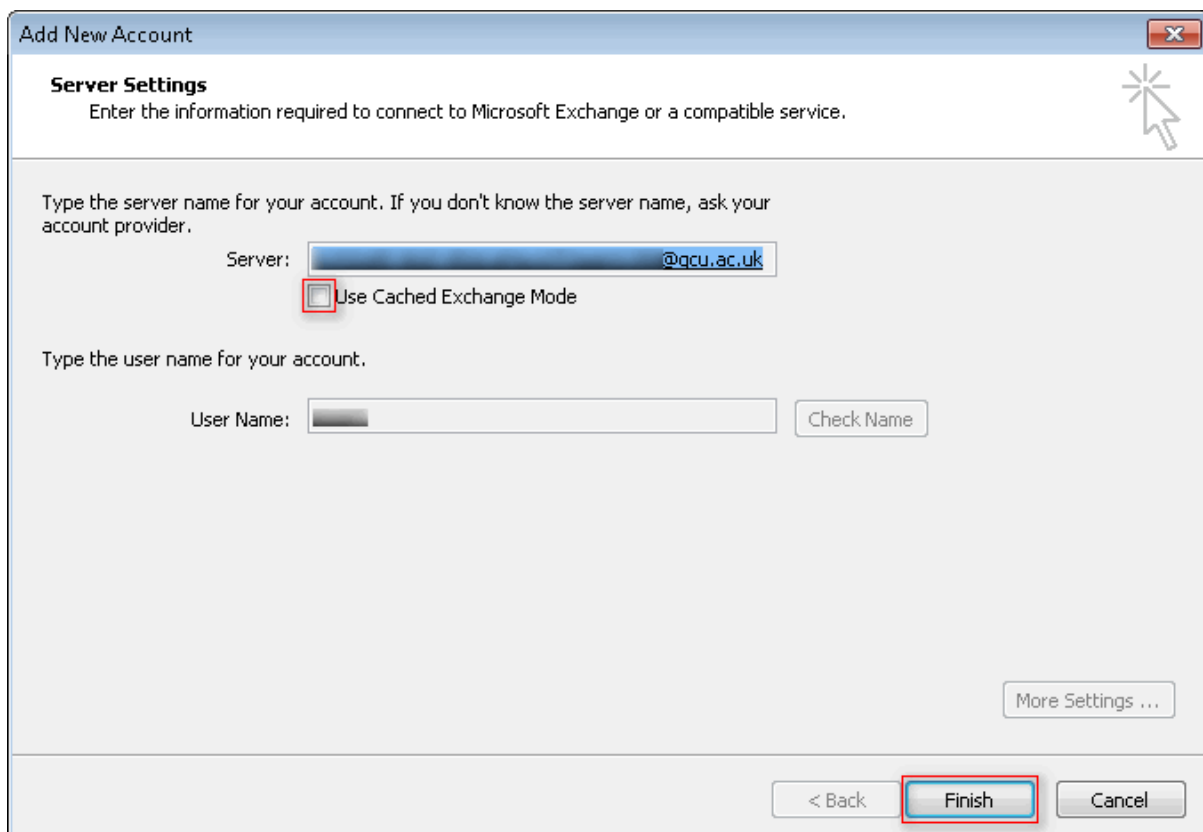
Step2 Enter the email address of the account you want to access in the E-mail Address field and click Next.



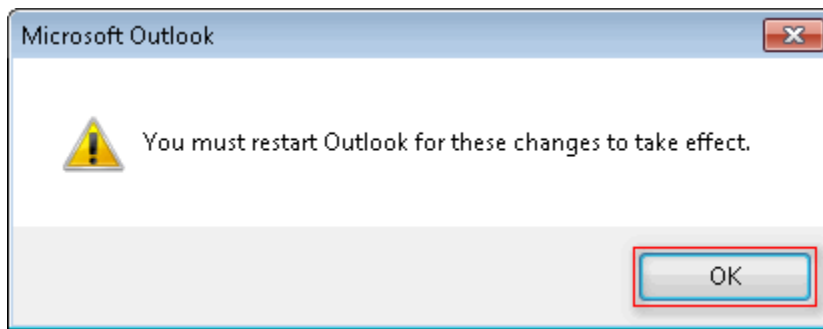
Step 3 Check Manually configure server settings and click Next.



Step 4 Uncheck Use Exchange cached mode if it's checked and click Next.



Step 5 Click OK.



Step 6 Restart Outlook.