

Newsletter

Research Centre for Health (ReaCH)

March 2026

Welcome

As the new Director of ReaCH I would like to extend a warm welcome to colleagues and partners as we continue to develop the Centre's next phase. ReaCH has grown into a diverse and collaborative research environment. The strength of the Centre lies in both the quality of individual programmes and the collective impact created when these areas work together.



We are now introducing a clearer strategic structure built around three interconnected themes: Targeted Therapeutics, Rehabilitation, and Public Health. These themes reflect the breadth of our activity while providing a coherent framework through which we can communicate our strengths externally and build larger, interdisciplinary programmes. We are currently working our way through sandpit events to improve the granularity of what these themes look like and what they can deliver. Collectively, these themes will position ReaCH as a collaborative and patient-focused centre committed to addressing health inequalities and long-term conditions. Our work is further strengthened through leadership in doctoral training, knowledge exchange, and the generation of evidence that informs policy and practice at national and international levels.

Alongside this thematic development, we are establishing a website refreshed strategic look and external profile for the Centre. In a challenging environment for the higher education and research sector, it is increasingly important that we clearly articulate who we are and the value of what we do. A stronger external identity will help us engage more effectively with commercial stakeholders, broaden conversations with diverse funding bodies, and leverage opportunities beyond traditional funding routes. This approach will support exploratory partnerships while ensuring that ReaCH remains agile, outward-facing, and positioned for sustainable growth.

I look forward to working with you all as we continue to build a visible, connected, and ambitious future for ReaCH.

Professor Gordon Ramage
Director of ReaCH

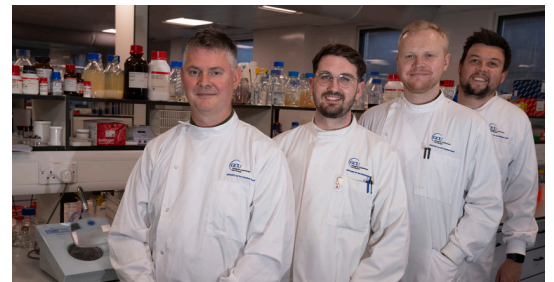


Glasgow Caledonian University to lead £2.6m UK Doctoral Training Programme to tackle global oral health challenges

Glasgow Caledonian University has secured £2.6million to lead a major new UK-wide doctoral training programme to spearhead research into oral health and dental disease prevention.

Funded by the Biotechnology and Biological Sciences Research Council (BBSRC) and delivered in partnership with Haleon, a consumer company focused on better everyday health, the six-year initiative will support 20 PhD students across five universities. Students will investigate some of the biggest challenges in oral health, including gum disease, and tooth decay and sensitivity, and will work closely with experts from academia, clinical practice and industry.

The programme is led by Professor Gordon Ramage, Director of Glasgow Caledonian's School of Health and Life Sciences' Research Centre for Health (ReaCH), alongside colleagues Dr William Johnston, Dr John Butcher and Dr Ryan Kean, with academic partners at King's College London, the University of Leeds, Queen Mary University of London and the University of Southampton.



The World Health Organisation (WHO) recognise oral health as a fundamental part of overall health and wellbeing. Oral diseases affect an estimated 3.5 billion people worldwide, and the economic cost of managing bacteria in the mouth is estimated at £50 billion a year. With oral diseases linked to serious conditions such as diabetes and cardiovascular disease, effective daily oral care plays a critical role in preventing these health issues.

The programme will focus on key research areas including dental caries prevention, dentine hypersensitivity, and gum health. By improving understanding of the biological, mechanical and physiological processes that keep the mouth healthy, researchers aim to develop better preventative strategies and new routes to treatment.

The award is part of a £40 million package of Industrial Doctoral Landscape Awards (IDLAs) and Doctoral Focal Awards (DFAs) announced on 16 December by UK Research and Innovation (UKRI) and its BBSRC, which is funding 15 studentships. The other five studentships are funded by each university at a cost of around £800,000.

Haleon will act as the central industry partner, helping students understand how scientific discovery translates into next-generation oral health solutions which deliver better health outcomes for consumers. The initiative will also provide specialist technical training and insight into research and development within a global consumer health company, preparing the next generation of talent for careers that shape the future of oral care. By connecting leading universities with industry expertise, the programme will equip emerging researchers with the skills needed for careers in science, healthcare and innovation, while supporting advances that can improve oral health around the world.

Students will benefit from a wide range of training opportunities and gain a comprehensive understanding of how research and development operates within a multinational consumer healthcare company, underpinned by expert technical training across a broad range of disciplines.

[Read more](#)



Women's health researchers awarded funding to predict pelvic floor problems

Health researchers at Glasgow Caledonian University have been awarded funding to investigate the validity of a tool they have developed to calculate a woman's risk of pelvic floor problems after childbirth.



Childbirth is a major cause of Pelvic Floor Dysfunction (PFD), which can include prolapse, and urinary and faecal incontinence. It negatively affects women, is costly, and is a topic focused on in the Scottish Government's Women's Health Plan, Phase 2.

GCU Professors Suzanne Hagen and Carol Bugge, along with colleagues from University Hospitals Plymouth NHS Trust (Professor Bob Freeman), University of Aberdeen (Dr David McLernon), NHS Tayside (Lisa O'Hare), University of Otago (Professor Don Wilson) and consumer representative, Donna D'Sylva, were awarded £320,000 by the Chief Scientist Office (CSO) to test their risk prediction tool, UR-CHOICE. Professor Hagen said: "Previously, as part of an international project with University of Gothenburg and Duke University, we developed a way to calculate what a woman's PFD risk would be 12 and 20 years after childbirth for discussion with her as part of her maternity care. This project will use available Scottish health data to test if the tool works as it should, and to encourage its use post-natally to identify women who will have PFD in the future."



New PhD studentship funding to support health research at GCU

Glasgow Caledonian University researchers have secured four-year PhD studentship funding from Medical Research Scotland, supporting two new doctoral researchers and strengthening industry collaboration.

The funding will support two PhD students: one based in the Williams Blood Cancer Research Lab led by Dr Mark Williams, and one in Dr Ryan Kean and Professor Gordon Ramage's lab. Both students will begin in October 2026, with Medical Research Scotland advertising the studentships via FindAPhD.com.

Dr Williams' project, ReproMyelo-MAC: Lipid-Based Strategies for Macrophage Reprogramming in Multiple Myeloma, is being delivered in collaboration with ABITEC Corporation and is valued at around £200,000.

The second studentship, led by Dr Ryan Kean in collaboration with CC Biotech Ltd, will support the RESTORE project, focused on developing new treatments to improve the vaginal microbiome. This project is also valued at around £200,000.

Professor Gordon Ramage, Director of the Research Centre for Health (ReaCH), said: "These two studentship projects align closely to our Targeted Therapeutics theme within ReaCH, and demonstrate the strength and quality of our science. Winning these awards in a competitive environment is testament to the researchers within GCU."



New resources on cardiac arrest recovery for survivors, clinicians and researchers

A Glasgow Caledonian University physiotherapy lecturer has helped produce the first NHS information materials on cardiac arrest recovery.

Dr Vicky Joshi worked with the Resuscitation Council UK (RCUK) to develop 'Support After Cardiac Arrest', which has been endorsed by NHS England, NHS Scotland and NHS Wales.



The support after cardiac arrest resource explains what happens during a cardiac arrest, how it differs from a heart attack, and why early CPR and defibrillation are vital in saving lives. It also outlines what survivors can expect during their recovery – from time in hospital to ongoing rehabilitation and emotional support, as well as information on returning to work and driving after a cardiac arrest.

Dr Joshi, Lecturer in Physiotherapy in the Department of Allied Health Professions, said: "The content in the paper resource, along with the new NHS Inform web pages, provides another step along the way to ensure everyone affected by cardiac arrest receives the help and support they need."

Dr Joshi, who helped launch the resource at the recent RCUK conference, also helped design the content for the first NHS Inform pages on Cardiac Arrest and Recovering from a Cardiac Arrest.



GCU academic shares expertise on long-term health conditions

The Scottish Government is looking at ways to improve services for people living with long-term conditions such as diabetes, cardiovascular disease and arthritis.

Dr David Hamilton, who is an expert on musculoskeletal conditions, recently contributed to a roundtable discussion on the development of an integrated policy to ensure that everyone affected can access the services and resources they need to live well with their condition. The aim of the new policy is to reassess how services are planned and delivered to address conditions including cardiovascular disease, neurological disorders, musculoskeletal disorders such as arthritis, and mental health conditions. The roundtable, led by Jenni Minto MSP, Minister for Public Health, heard from clinical experts and representatives of charities that support those living with long-term health conditions.

Dr David Hamilton, Interim Associate Dean for Research in the School of Health and Life Sciences (GCU) and a Reader in musculoskeletal health, said: "It was great to take part in the discussion on the draft framework as we look to develop the NHS support services needed across the country. Many people suffer with multiple long-term conditions and the services they need sit across clinical services in both primary and secondary care. At GCU we are a leading voice in rehabilitation, which is key to addressing and trying to prevent long-term health issues."



Applications open for the Converge Challenge 2026

Looking to transform your research and innovation into a business? Applications are now open for this year's Converge Challenge.



Open to Scottish university staff, students and recent graduates, the Converge Challenge is for novel business propositions with the potential to become successful, sustainable companies that have a positive impact in Scotland.

The prestigious programme provides a unique blend of expert-led business training, validation and community with a competitive edge. Now in its 15th year, it has built a reputation as Scotland's premier springboard for academic entrepreneurs, providing the clarity, confidence and connections needed to take research and innovation out into the marketplace.

GCU's Professor Sebastien Chastin is one of many academics turning their research into successful ventures. **Professor Chastin led a winning team at the Converge Challenge 2024.**

If you're successful in gaining a place on the programme, you will receive bespoke business training, join a network of like-minded innovators and benefit from expert guidance and peer-to-peer support, and access to a prize fund of more than £85,000. The deadline for applications is Thursday, April 2. **To find out more and apply, visit the Converge Challenge website.**

Hat-trick of awards for University podiatry

Glasgow Caledonian University is celebrating a remarkable triple success after scooping three major honours at the 2026 Tomorrow's Podiatry Awards.

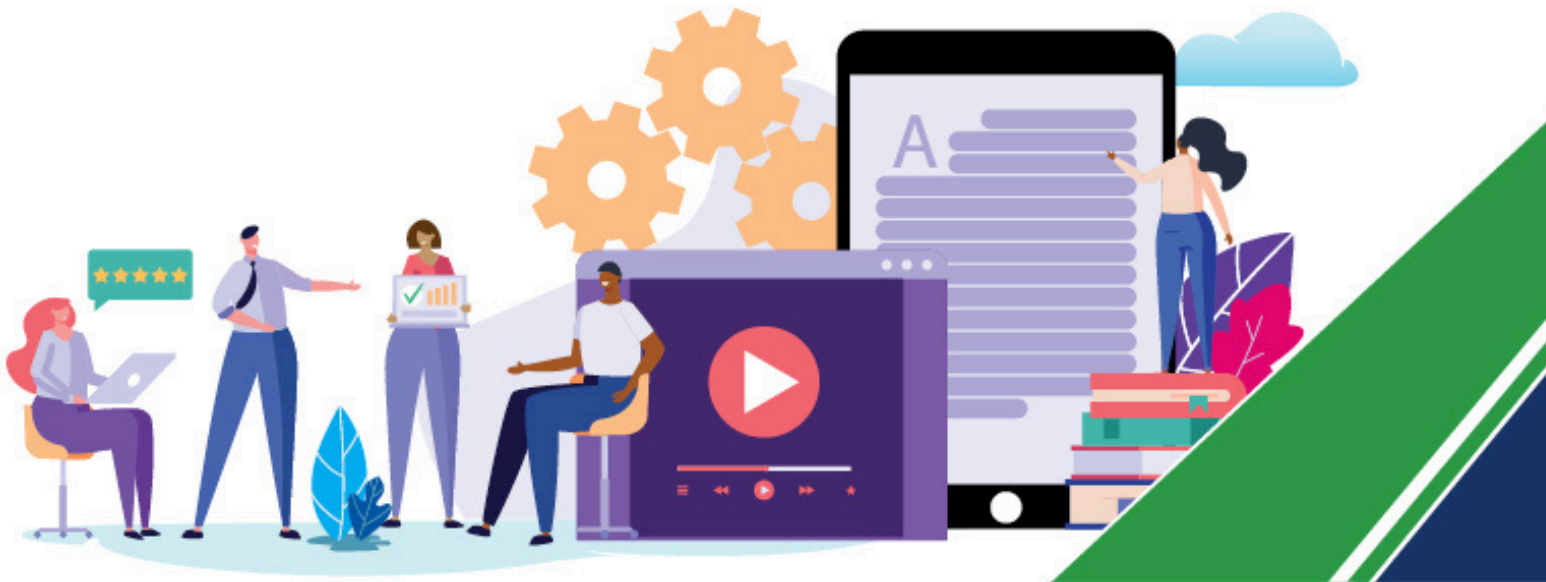
The University secured Student of the Year (Pre-registration), Research Student of the Year and Society of the Year at the ceremony, held on Monday, March 2, at the Pullman Liverpool Hotel.



- Heather MacDougall, a final-year BSc (Hons) Podiatry student, was named Student of the Year (Pre-registration), recognised as a "fantastic ambassador for the profession". Heather also received a Carnegie Vacation Scholarship for her research exploring the impact of restrictive eating disorders (REDs) on the feet. Her work previously won the People's Choice Award at the Royal College of Podiatry conference. In addition to her award win, Heather was also a finalist for the Student Leadership Award.
- Research Student of the Year was awarded to Sarah-Jane Walls, who is in year three of a five-year part-time PhD in Health Sciences and was also a finalist in 2025. She was recognised for her sustained contribution to strengthening the profession's research base.
- The GCU Podiatry Society was named Society of the Year, commended for creating valuable networking opportunities and delivering interdisciplinary events that bring together students across all year groups.
- Dr Lisa Wright was also shortlisted for Educator of the Year, highlighting the breadth of talent and commitment within GCU's academic team.

[Read more](#)





Conferences and events

A round-up of all the latest and forthcoming event news from the Research Centre for Health.

GCU welcomes distinguished alumnus and internationally renowned HIV researcher

Professor Mario Stevenson visited our Glasgow campus in February to deliver a keynote research seminar on finding a cure for HIV, and to engage with top infection prevention researchers at GCU.



Professor Stevenson was warmly welcomed to the University by our Principal and Vice-Chancellor Professor Mairi Watson, and Pro Vice-Chancellor Research Professor Sharron Dolan.

Professor Dolan said: "It was a great honour to welcome Mario back to GCU and, as a fellow Airdrieonian, particularly inspiring to hear about his outstanding research career and the impact his work has had in advancing global HIV prevention. It was also wonderful for Mario to meet with our research team who are working at the forefront of bloodborne virus research, and who share a deep commitment to HIV and Hepatitis C elimination."

Professor Stevenson is a Professor in the Department of Medicine at the University of Miami. He is also the university's Director of AIDS and Emergency Infectious Diseases, Director of Global Virus Network and Co-Director of the Miami Center for AIDS Research. Professor Stevenson graduated from Glasgow Caledonian with a BSc in 1979 before going on to complete a PhD in Biochemistry at the University of Strathclyde in 1984. His seminar explored the body of work he has cultivated over the past 25 years on the viral aetiology of AIDS. His work on strategies to cure HIV are world renowned, spanning the understanding of the mechanisms regulating HIV replication and disease pathogenesis, to evaluating Pre-Exposure Prophylaxis (PrEP), a treatment to prevent HIV infection in the community. In recent years, Professor Stevenson has also developed tests for Zika and drug-resistant viruses.



GCU academic shares research on how alcohol industry targets women

Renowned expert on gender and alcohol Professor Carol Emslie recently shared her research on how the alcohol industry uses female identity as a marketing tool.

Professor Emslie, who has worked with the World Health Organization on this topic, spoke at a recent Alcohol Change UK online learning event that focused on women and alcohol through their life course. Her presentation was titled "Selling Femininity: Women, Identity and the Alcohol Industry."

Professor Emslie, from the Substance Use Research Group at GCU's Research Centre for Health, said: "The alcohol industry uses images of femininity and female empowerment to sell their product to women. They promote an illusion of female solidarity and companionship via drinking, rather than more genuine connections between women. This echoes how the tobacco industry in the 1960s targeted women, promoting cigarettes as empowering and symbols of liberation."

The event, held over two mornings in November, attracted more than 150 delegates, including frontline workers from the third sector and statutory services, as well as people with lived experience of alcohol harm. It provided an opportunity for knowledge transfer between academic researchers and practitioners working directly with communities affected by alcohol harm. Alcohol Change UK designed the programme to help professionals ensure that information and support for women is tailored, relevant and accessible throughout different life stages.



Professor Todhunter-Brown presents on co-production of evidence synthesis



Professor Alex Todhunter-Brown, from the School of Health and Life Sciences' Research Centre for Health (ReaCH), shared her expertise on co-production of evidence synthesis during a webinar hosted by the Cochrane Co-production Methods Group.

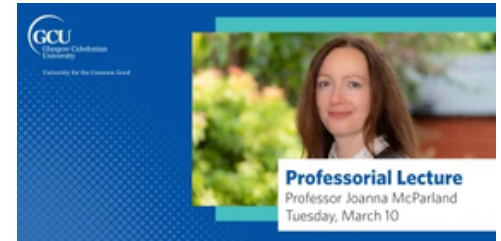
Cochrane is a non-profit network of health researchers and professionals, patients and carers who work together to produce and promote trusted, high-quality information that improves health and healthcare worldwide. The Cochrane Co-production Methods Group, which launched in 2023, promotes and develops methods for co-production in evidence syntheses on health and care topics. Alex Todhunter-Brown, a Professor of Evidence Synthesis, is a founding member and Co-Chair of the Cochrane Co-production Methods Group's Board.

Co-production is when researchers work in partnership with people who are not traditionally members of a research team, such as patients and their family members, health professionals and wider members of the public. Evidence syntheses – sometimes called systematic reviews – involve finding and bringing together information from multiple studies investigating the same topic to answer a research question. During the webinar, Professor Todhunter-Brown gave an introduction to the co-production of evidence synthesis. She also moderated an international panel that will discuss global challenges and opportunities in this field.



Professorial Lectures

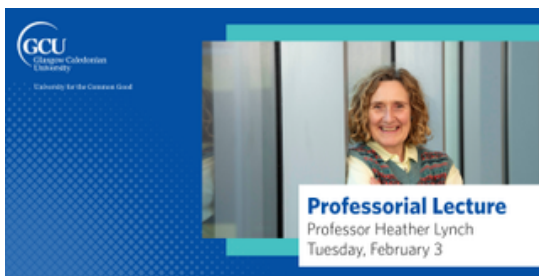
Glasgow Caledonian University Professor of Health Psychology Joanna McParland examined how psychological and social factors shape how we experience and treat pain in her Professorial Lecture on March 10.



Professor McParland, from the Department of Psychology, gave a lecture entitled More than a symptom: How psychology and social life shape the experience of pain and advance treatment as part of a series celebrating the work and expertise of newly appointed professors.

Pain is often treated as a purely physical problem, but what if that's only part of the story? In her lecture Professor McParland showcased her research on understanding the impact of social psychological processes (including social justice beliefs) on the experience of pain, as well as her work on psychological interventions designed to support people with chronic pain to remain in and return to work.

The lecture offered an insight into the lived experience of long-term, chronic pain, cutting-edge research exploring the psychological and social factors shaping how pain is experienced, and psychological interventions that can improve outcomes for patients.



Glasgow Caledonian University Professor of Social Work Heather Lynch delivered a lecture entitled Community Building in Precarious Worlds examining communities come together in the face of uncertainty, social change and global challenges in her Professorial Lecture on February 3.

Professor Lynch, from the Department of Social Work in the School of Health and Life Sciences, explored what it means to build and sustain a community during times of precarity, drawing on experiences from both urban and rural settings. She reflected on how large-scale issues such as climate change, technological change and political uncertainty are experienced in the everyday lives of real people, particularly those from marginalised communities.

Professor Heather Lynch is leading a four-year research project - Muir is Tir (Land and Sea): Adapting to Coastal Change on Barra and Vatersay - focused on developing nature-based solutions to coastal erosion. A passionate advocate for the islands, she is empowering local people to shape a futureproof plan for their homes, businesses, and places of cultural and historical significance. She works in close partnership with organisations such as Coimhearsnachd Bharraidh agus Bhatarsaidh (Barra & Vatersay Community) Ltd, The Vatersay Association and the Borve Graveyard Committee, drawing upon their local knowledge and history.

Professor Lynch brings a distinctive interdisciplinary perspective to her work, having come to social work research from a background in fine art. Alongside her academic career, she has extensive experience working outside higher education with marginalised groups, informing her research and teaching on community organising, social justice and inequality.



Dr Hill to chair major nursing research conference

The School of Health and Life Science's Dr Gordon Hill is chairing the Royal College of Nursing's (RCN) International Nursing Research Conference later this year.

Attracting more than 300 delegates from around the world, the conference will take place at the University of Strathclyde from September 17 to 19.



The three-day event will celebrate the potential of nursing research to advance health across communities, systems and global contexts. As healthcare becomes increasingly interconnected and shaped by technological advances, migration, sociopolitical change and new models of care, the conference will highlight how research drives innovation, strengthens collaboration, and delivers meaningful impact.

Gordon is a Senior Lecturer and the Departmental Lead for International in the Department of Nursing Community and Public Health. He is also the Director of Glasgow Caledonian's WHO Collaborating Centre for Nursing and Multidisciplinary Rehabilitation. As well as being a member of the RCN Research Forum Steering Committee, Gordon also recently joined the RCN International Committee. This acts as an advisory committee on international issues for the RCN Council. Gordon said: "As Conference Chair, I am looking forward to exploring our theme: Research Without Boundaries: Innovation, Collaboration and Global Impact. This theme reflects our commitment to showcasing international nursing research that is ambitious, creative and influential at a global level. The conference aims to stimulate discussion, inspire new partnerships and celebrate the achievements of our vibrant research community."

GCU students shine at psychology conference

A Glasgow Caledonian University psychology post-graduate student was a prize winner at the annual British Psychological Society Division of Sport and Exercise Psychology conference.



Erin Corner, who is in her second year on the DPsych and a graduate of GCU's BSc Applied Psychology programme, won an award for Best Student Poster, which showcased her research project on the ethics of artificial intelligence (AI) in applied sport and exercise psychology.

Erin is now working with her project supervisor, Dr Alex Oliver, Lecturer in Applied Psychology, to turn her research into a journal article.

Erin said: "I interviewed sport and exercise psychologists to develop an understanding. AI isn't going anywhere and is becoming more prominent in practice – we must adapt. There was lots of interest with many conference attendees keen to read my study, highlighting the importance of this topic. Winning the award has been a great confidence boost for the rest of the doctorate. Our DPsych taught programme is a unique course and I am very proud to be continuing my studies at GCU."

Dr Oliver said: "I am very proud of the work Erin has completed and presented at the conference. My sense of pride grew when she won the prize, seeing off tough competition, including from her classmates and recent graduates from our programme. The conference brings together the country's leaders in the field of sport and exercise psychology, and I am very proud of Erin and all the GCU trainees and staff for their contributions. GCU staff and trainees are leading the way in several areas in our field, and this was reflected in the excellent presentations, posters, and workshops."



Dr Curley delivers guest lecture in Norway

Dr Lee John Curley delivered a guest lecture at the University of Oslo in February.



The School of Health and Life Sciences lecturer is a leading expert on the psychology of the courtroom and has research papers published on jury biases, forensic cognition, legal psychology and decision science. The lecture, entitled Legal decision-making in rape trials: What biases verdict-making, outlined the findings of two recent studies. Dr Curley recently hosted a workshop on juror decision-making and biases for the Scottish Government. An audience was split into juries and presented with a realistic 50-minute video of a mock trial, as part of the exercise.



Lecturer shared forensic psychology expertise at State Hospital event

A lecturer in Applied Forensic Psychology at Glasgow Caledonian University was a keynote speaker at an event being held at Scotland's only high-security psychiatric hospital in February.

Dr Lindsey Gilling gave a talk on Between Intent and Impact: Curiosity in Forensic Clinical Practice at the 2026 Forensic Lead Nurse Conference: Celebrating the Nursing Journey, held the State Hospital in Carstairs, Lanarkshire, on February 13. The event, organised by The Forensic Network and School of Forensic Mental Health, is dedicated to forensic nursing practice across Scotland's forensic mental health services and is aimed at forensic mental health professionals and those studying nursing. During her talk, Dr Gilling, who previously worked at the State Hospital while studying for her PhD, explored the space between intent and impact as a way to sharpen clinical insight and professional curiosity. She explained how current research suggests that psychological and psychosocial interventions in forensic settings show limited and inconsistent evidence of impact on key outcomes such as risk and wellbeing.



The 'baby blind spot' that affects infants in the care system

A Glasgow Caledonian University social work lecturer recently presented his findings on how the care system is failing infants to policy makers.

Dr Gary Kainth's research revealed a 'baby blind spot' when it comes to the under-fives, who wait more than four times longer for a decision about a permanent placement in Scotland than they do in England. The cost of delivering care services for infants is also nearly twice as expensive compared to south of the border, according to Dr Gary Kainth, lecturer in Social Work at Glasgow Caledonian University and Honorary Research Associate at the University of Glasgow. He shared his expertise at a recent event hosted by the National Society for the Prevention of Cruelty to Children (NSPCC) Scotland. 'Keeping the Promise to Infants' was set up to highlight the unique needs of babies and infants in care. Present were MSPs, civil servants and senior leaders from Children's Hearings Scotland, the Scottish Children's Reporter Administration, The Promise and Social work Scotland. The Children (Care, Care Experience and Services Planning) Bill is currently going through consultation, and a large part of the bill will be used as a vehicle for Children's Hearings reform.





Selected Publications

1. Bhalla N, Rabiey M, Bendale P, et al. From the lens of early-career researchers: bridging science, technology, arts, and humanities to tackle antimicrobial resistance. *Nat Commun* 2026; 17: 112.
2. Blatgé H, Paul L, van Wijck F. High-intensity interval training after stroke: A mixed-methods systematic review and meta-analysis of safety, feasibility and acceptability. *Clin Rehabil* 2026; 40: 304–37.
3. Boakye MDS, Osei EP, Akyirem S, et al. Psychosocial burden of diabetes in Africa: A systematic review and meta-analysis. *J Health Psychol* 2026; 31: 948–82.
4. Bruvik SM, Hermansen AS, Joshi V, et al. Translation, cross-cultural adaptation, and psychometric properties of the Danish version of the Modified Caregiver Strain Index (M-CSI) among relatives of out-of-hospital cardiac arrest survivors. *Eur J Cardiovasc Nurs* 2026: zvaf226.
5. Campbell P, Cowie J, Davis B, et al. Effectiveness of legally mandated non-custodial drug and alcohol treatment orders for improved health, well-being, global functioning and quality of life: A systematic review and meta-analysis. *Health Justice* 2026.
6. Canfield M, Gilchrist G, Downs J, Norton S. Recurrent care proceedings and use of services for substance use disorder: A retrospective linked data cohort study of mothers in South London. *Addiction* 2026; 121: 163–72.
7. Cen S, Li J, Reilly J, Chen J, Jiang H-R, Shu X. The therapeutic potential of gypenosides for age-related macular degeneration. *Front Nutr* 2026; 13: 1773391.
8. Chastin S, Verloigne M, Giné-Garriga M. Establishing the ‘Science of Co-creation’ for public health. *Public Health* 2026; 250: 105988.



9. Christensen H, Pezzella FR, Roaldsen MB, et al. Stroke Action Plan for Europe 2018-2030 (SAP-E): mid-term review and update. *Eur Stroke J* 2026; 11: aakaf026.
10. Collins J, Reilly JS, Molesworth M, Ness V. Exploring the role of nursing care interventions in the prevention of non-device-associated healthcare-associated infections: A scoping review. *Am J Infect Control* 2026; 54: 344-55.
11. Conway A, Gibbs J, Spence T, et al. 'It's less traumatic because you're in your own home': exploring trauma-informed care for digital sexual health services - a secondary qualitative data analysis. *Sex Transm Infect* 2026; 102: 11-6.
12. Daly S, Reid L, Buchanan R, et al. Peer Interventions for Hepatitis C Testing and Treatment in OECD Countries: A Systematic Scoping Review. *J Viral Hepat* 2026; 33: e70130.
13. Dimova ED, Smith M, Shortt NK, et al. How do residents perceive alcohol availability and its impact on drinking behaviour? A qualitative study. *Health Place* 2026; 98: 103616.
14. Estcourt CS, McLeod J, Flowers P, et al. Recommendations for developing asynchronous online consultations for chlamydia treatment for underserved populations: a Behaviour Change Wheel analysis. *Sex Transm Infect* 2026: sextrans-2025-056677.
15. Fletcher A, Dalkin S, Anderson R, et al. Bringing together realist and economic approaches in the evaluation of health and social care interventions: a scoping review of theoretical, methodological and practical implications. *Soc Sci Med* 2026; 393: 119050.
16. Foster C, Weston D, Maynard Smith L, et al. Infection Prevention and Control risk assessment and policy for respiratory viral infections in NHS trusts in England: a national survey. *J Hosp Infect* 2026: S0195-6701(26)00037-X.
17. Goodsell A, Purcell M, Poyade M, Cownie L, Paul L. Design Recommendations for Virtual Reality-Based Upper Limb Exercises From People With Tetraplegia and Spinal Cord Injury Rehabilitation Specialists: Focus Group Study. *JMIR Rehabil Assist Technol* 2026; 13: e66832.
18. Heitner JA, Stansfield SE, Mitchell KM, et al. Cost-effectiveness of leveraging long-acting injectable cabotegravir to expand PrEP coverage among MSM in two contrasting North American cities. *J Int AIDS Soc* 2026; 29: e70061.
19. Hotterbeex P, van Uffelen JGZ, Latomme J, et al. Walking towards psychosocial well-being? Unveiling psychosocial impacts of a group-based walking program with and without cognitive enrichment in older adults-a mixed-methods randomized controlled trial. *PeerJ* 2026; 14: e20569.
20. Howe MH, Bartie KL, Mackay WG, et al. *Candidozyma auris* Reported in Scotland: a Call for Vigilance Amid Global Rise. *Mycopathologia* 2026; 191: 21.
21. Ierardi E, van Wijck F, Ali M, Best C, Coupar F. Defining Severity Levels for Post-Stroke Upper Limb Motor Impairment and Activity Limitation: A Systematic Review. *NeuroRehabilitation* 2026; 58: 3-16.



22. Johnston W, Smith J, Giammarini E, et al. Narrow-spectrum drug repurposing: targeting *Gardnerella vaginalis* biofilms associated with bacterial vaginosis. *J Appl Microbiol* 2026; 137: 1xag034.
23. Joshi VL, de la Cour FD, Stenbæk DS, Borregaard B, Hassager C, Wagner MK. The role of in-hospital traumatic distress after out-of-hospital cardiac arrest in later fatigue, sleep quality, and health-related quality of life. *Int J Cardiol* 2026; 445: 134043.
24. Joshi VL, Irvine B. Telemedicine interventions for ICD recipients with psychological distress: an important piece of a complex puzzle. *Eur J Cardiovasc Nurs* 2026: zvag042.
25. Mason H, Irvine N, Manoukian S, et al. Economic evaluation of participation in community led organisations for individuals living in disadvantaged areas in the UK. *Soc Sci Med* 2026; 389: 118761.
26. McDonald SA, Palmateer N, McAuley A, et al. Estimating incidence rates of primary infection and reinfection with hepatitis C virus among people who inject drugs in Scotland: a model-based analysis of repeated cross-sectional survey data. *Lancet Reg Health Eur* 2026; 60: 101505.
27. McEwan GP, Andreopoulou G, Koufaki P, et al. Feasibility, safety, and intensity of Frame Running for people with multiple sclerosis with moderate-to-severe walking impairments. *Disabil Rehabil Assist Technol* 2026: 1–17.
28. McFarland A, Manoukian S, Mason H, Reilly J. A Cost-Utility Analysis of Surgical Site Infection Prevention: Broadening the Scope. *Appl Health Econ Health Policy* 2026; 24: 421–35.
29. Mehra MR, Mohiuddin MM, Reichart B, et al. The 2026 International Society for Heart and Lung Transplantation Consensus Statement on clinical cardiac xenotransplantation. *J Heart Lung Transplant* 2026: S1053-2498(25)02468-4.
30. Mion M, Joshi VL. Addressing fragmentation in cardiac arrest survivorship research: the Cardiac Arrest Research Hub. *Resuscitation* 2026; 219: 110978.
31. Mohammed H, Migchelsen SJ, Duffell S, et al. Enhancing surveillance of sexually transmitted infections in England with gender identity and behavioural data: The GUMCAD STI Surveillance System. *PLoS One* 2026; 21: e0341128.
32. Morgan C, Aussems S, Donaldson C, et al. Development and Pre-testing of the Children and Young People's Time-Use Questionnaire for use in Economic Evaluation (CYP-TUQEE). *Value Health* 2026: S1098-3015(26)00040-9.
33. Ramage G, Sherry L, Kean R. Microbe Profile: *Candidozyma auris*: an emergent and resilient yeast and new antifungal strategies. *Microbiology (Reading)* 2026; 172.
34. Rubio A-P, Dunn J, Borthwick J, et al. Beyond the dataset: integrating public voices in data science. *Res Involv Engagem* 2026; 12: 2.



35. Scott H, Dong L, Stevenson A, Martin PE, Graham SV. The relationship between Connexin 43 (Cx43) and partner protein, human discs large homologue-1 (Dlg1) during wound closure in keratinocytes. *Cell Tissue Res* 2026; 403: 23.
36. Sedighi N, Hendry G, Pallari J, Barn R. Exploring Experiences and Perspectives of Prescribed Foot Orthoses in People With Diabetes. *J Foot Ankle Res* 2026; 19: e70130.
37. Silhol R, Booton RD, Mitchell KM, et al. Identifying priority populations for HIV interventions using acquisition and transmission indicators: a combined analysis of 15 mathematical models from ten African countries. *Lancet HIV* 2026; 13: e30–9.
38. Stanmore E, Parchment A, Odebiyi B, et al. Effectiveness and Cost-Effectiveness of a Digital Falls Prevention Program Versus Usual Care to Improve Balance, Falls Risk, and Function in Older Adults: Protocol for the Keep-On-Keep-Up Randomized Controlled Trial. *JMIR Res Protoc* 2026; 15: e78840.
39. Tan P, Fu X, Lin S, et al. TrkB receptor antagonist ANA-12 impairs memory reconsolidation in novel object recognition task via regulation of hippocampal transcriptome. *Neurobiol Learn Mem* 2026: 108141.
40. Thomas MJ, Hughes G, Cooke K, et al. Clinical and cost-effectiveness of individualised exercises and foot orthoses in the treatment of plantar heel pain: protocol for the TREADON randomised multi-arm multi-stage adaptive trial. *NIHR Open Res* 2025; 5: 42.
41. Todhunter-Brown A, Petkovic J, Chang C, et al. Methods of Engaging Interest-Holders in Healthcare Evidence Syntheses: A Scoping Review. *Cochrane Evid Synth Methods* 2026; 4: e70066.
42. Tomaz SA, Shore CB, Ryde GC, et al. Generating Older Active Lives Digitally (GOALD): Exploring Older Adults' Views of Digital Technology for Physical Activity. *J Phys Act Health* 2026: 1–13.
43. Whiston A, Carr E, Cardy N, et al. The Adaptive Physical Activity Study in Stroke (TAPAS): A Feasibility Sequential Multiple Assignment Randomized Trial. *Adv Sci (Weinh)* 2026; 13: e13316.
44. Wilkinson M, Yeung A, Bishop J, et al. COVID-19 vaccination uptake and risk of severe COVID-19 disease among those in, and released from, prison care in Scotland: a national cohort and case-control study. *Int J Drug Policy* 2026; 147: 105080.
45. Wu X, Wang Z, Shi Y, et al. Male Circumcision and HIV Risk Compensation Among Men Who Have Sex with Men: A Systematic Review and Meta-Analysis. *AIDS Behav* 2026; 30: 96–106.
46. Yang Z, Moodie JE, Dall PM, et al. Agreement between self-report and device-measured sedentary behavior varies with cognitive function. *Psychol Aging* 2026.
47. Yii F, Strang N, Bernabeu MO, Dhillon B, MacGillivray T, MacCormick IJC. Epidemiology of pathologic myopia in UK adults with high myopia. *Br J Ophthalmol* 2026; 110: 204–11.



Recognition for GCU scientists

Researchers from across Glasgow Caledonian University have been recognised in this year's prestigious Elsevier-Scopus rankings, which are based on the number of citations the authors' work received in the previous year. All feature in the top 2% of cited researchers world-wide in 2025.

Nine researchers from the Research Centre for Health have been recognised: Professor Seb Chastin (Public Health – Sports Science); Professor Gordon Ramage (Biomedical Research – Microbiology); Professor Alex Todhunter-Brown (Clinical Medicine – General & Internal Medicine); Professor Dawn Skelton (Clinical Medicine – Geriatrics); Professor Marian Brady (Clinical Medicine – Neurology); Professor Suzanne Hagan (Clinical Medicine – General and Internal Medicine); Professor Lorna Paul (Clinical Medicine – Rehabilitation); Dr David Hamilton (Clinical Medicine – Orthopaedics); Dr Pauline Campbell (Clinical Medicine – General & Internal Medicine).

Branding and the use of LinkedIn for ReaCH

The Research Centre for Health (ReaCH) LinkedIn showcase page provides an important platform for communicating the breadth and impact of research taking place across the Centre. ReaCH is an interdisciplinary research community addressing major health challenges through work spanning targeted therapeutics, public health and rehabilitation, with strong partnerships across academia, healthcare and industry. LinkedIn plays a key role in raising the visibility of our research, strengthening external engagement and demonstrating impact beyond academia. We therefore encourage all ReaCH members to actively share and tag the Centre in posts relating to their activities. This includes publications, conference presentations, workshops, seminars, books, media contributions, funding successes, and public engagement initiatives. Regularly sharing these activities helps to build a clear external profile for the Centre, highlighting the diversity and quality of work being undertaken across our research themes. It also supports knowledge exchange by ensuring that partners, funders, policy stakeholders and the wider public can easily follow developments in ReaCH research. Colleagues are encouraged to follow and engage with the ReaCH LinkedIn page: <https://www.linkedin.com/showcase/research-centre-for-health-gcu/about/> By collectively contributing content, we can ensure that ReaCH maintains a strong and visible presence that reflects the scale and impact of our research activity.

SHIP Blog

Catch-up on the latest blogs from the Safeguarding Health through Infection Prevention (SHIP) research group including:

- Being part of a member society – the opportunities are endless for a student and for an experienced Infection Prevention professional

NESSIE Blog

Read the latest blogs from the NIHR Synthesis Scotland Initiative (NESSIE) including:

- Progress on our current review: “Experiences, perceptions and attitudes of health and social care professionals to management of children’s chronic non-cancer pain –a qualitative evidence synthesis”