



Our impact begins with you

Postgraduate guide 2024-2025

Welcome to Glasgow Caledonian

Glasgow Caledonian University, the University for the Common Good, is a vibrant, values-led, multicultural, civic University. We have a global outlook and a strong commitment to delivering social innovation and sustainable development in our education and research.

Glasgow Caledonian is the joint top university in Scotland for graduates who are in work and/or further study 15 months after completing their degree (HESA, 2022).

With:

- More than **22,000** students
- From **120** countries
- More than **1,600** staff members
- Over **60** courses to choose from
- **95** welcoming clubs and societies

You can find our Student Terms and Conditions on the University website at: gcu.ac.uk/termsconditions. They set out your rights and responsibilities, as well as ours to you. They should be read prior to application.



We are ranked joint 70th in the world overall in the Times Higher Education University Impact Rankings. This is out of 1,410 universities, which places us in the top 5% globally.

In REF2021, 72% of our University research activity was rated as world leading (4*) or internationally excellent (3*), meaning GCU was unsurpassed amongst the Scottish post-92 universities for the proportion of our research being at that level.

We also ranked 1st in the UK and fourth in the world for promoting gender equality. (Times Higher Education University Impact Rankings, 2022)



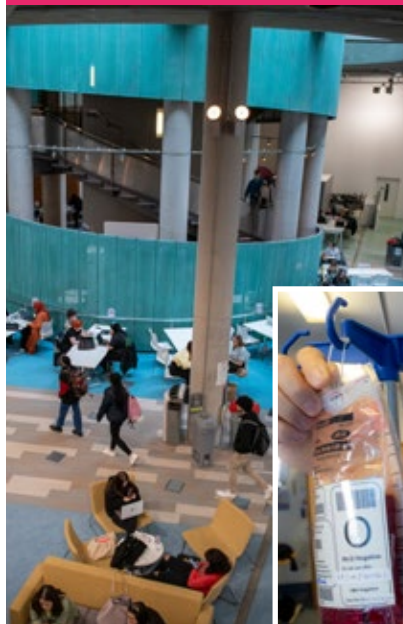
Find out more about
Glasgow Caledonian University

Glasgow campus and facilities

Our lively and welcoming Glasgow campus has a lot to offer - from superb, modern facilities to social and informative events. There's something for everyone to get involved in.

Take advantage of the wider university experience:

- Study in our award-winning library, which has a mix of social and quiet study spaces, including 1,200 dedicated study spots and over 350 computers. Specialist librarians are available to help you access the information you'll need for coursework and dissertations, and to ensure you get the most from the digital education assets that are available. A dedicated postgraduate study space has been set up on level four, designed and equipped to help you study and relax.
- Grab a bite to eat or a drink at one of our four catering outlets
- Practise some self-care and work out at our onsite gym, The Arc. You can take part in spin, yoga, body pump, body attack, circuit training or box circuit classes, to name but a few!
- Join one of our sports clubs or societies via the Students' Association
- Access our in-person student services such as the Careers Team, Wellbeing and Student Funding.



Glasgow School for Business and Society (GSBS)

The purpose-built teaching facilities at GSBS align with the needs of our students and their future careers. Facilities like the Bloomberg Suite – which gives real-life experience of finance and business – our Media Studios, the Fashion Factory and the Law Clinic and Moot Room provide opportunities for authentic professional experiences.

School of Computing, Engineering and Built Environment (SCEBE)

We've invested millions of pounds in our virtual reality and testing facilities. These include our e-motion lab which tracks people's emotive response to games or websites, our recently upgraded suite of labs in forensics, sustainable energy, cyber security (SOAP labs), and smart technologies – such as robotics and internetworking – which support the teaching of autonomous systems.

School of Health and Life Sciences (SHLS)

Our interprofessional simulation suite provides 'virtual' hospital, home, and care home environments for students to develop their skills and confidence before placement. Our diagnostic imaging suite allows students to practise safely using real x-ray and medical ultrasound equipment under supervision. The Vision Centre provides clinical services for students to train as Optometrists, Ophthalmic Dispensers and Orthoptists – the only institution in the UK to do so.



Find out more about
Life on campus

Our London campus

GCU London is a postgraduate university campus of Glasgow Caledonian University, located in an ultra-modern environment in the heart of London. Situated in Spitalfields, one of London's most attractive locations, GCU London is close to the globally recognised financial and fashion industries.

The campus offers a unique range of MBA and MSc courses, high quality teaching and links with international businesses. GCU London provides students with an enriching and diverse learning experience underpinned by a vibrant international, intellectual and cultural life. We attract students from more than 56 countries and a range of backgrounds.

GCU London is ideally situated a short walk from Liverpool Street station, with a range of accommodation available close to the campus.



Find out more about
London campus



Employers trust GCU graduates

Never underestimate your ability

Employability is at the heart of all of our courses. With input from industry, our courses provide professional accreditation, work experience and guest lectures from leaders in their field. With the help of our careers service, you'll leave with significant professional advantage.

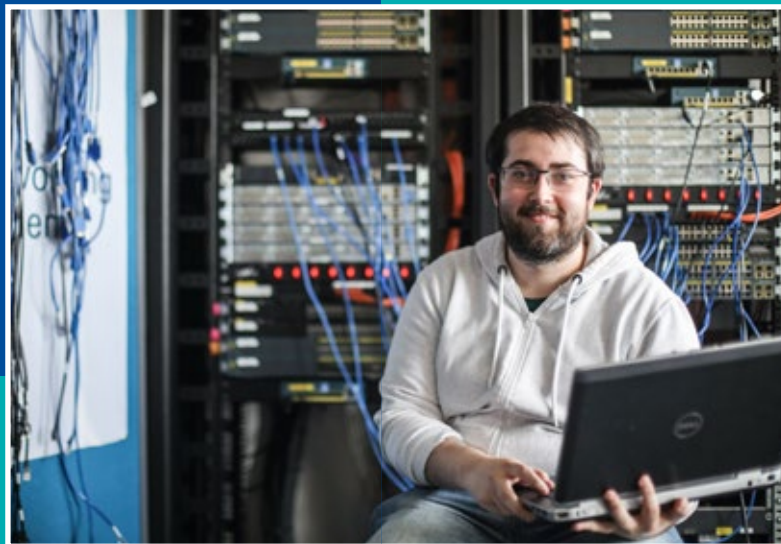
You'll be prepared for local and international job markets, accessing a range of services to help you showcase your professional skills, as well as activities to build your professional profile.

Career mentoring

Our innovative mentoring programme, GCU MINT (Mentoring, Internships, Networking and Talks), involves hundreds of alumni volunteering their time as mentors to final year students. These mentors give advice, support and a helping hand to guide students through those crucial next steps into employment.

Graduate success

Once you've completed your postgraduate degree, you can follow in the footsteps of previous graduates who have gone on to enjoy international careers with employers including NATO, BBC, Morgan Stanley, Rolls-Royce, the NHS, the Scottish Government, Health Canada and Hewlett Packard.



GCU

is the **joint top university in Scotland** for graduates who are in work and/or further study 15 months after completing their degree (HESA, 2022)

1st

in Scotland for providing **Graduate Apprenticeships** (SFC, 2022)

93%

of our graduates are in work and/or further study **15 months** after graduating (HESA, 2022)

"I was taught to learn my modules in the context of the working world, rather than solely theory from books."

Rebecca, MSc Marketing graduate

Placements

There's nothing quite like learning on the job to build your confidence, professional reputation and network. Many of our courses offer placement opportunities, you can even study a two-year master's. This gives you the chance to undertake one of our traditional master's courses with an additional element of professional practice taking place in year two.

Master's degrees with Professional Practice

LLM International Commercial Law

MSc Accounting, Finance and Regulation

MSc Human Resource Management

MSc Human Rights

MSc International Business Management

MSc International Economic and Social Justice

MSc International Fashion Marketing

MSc International Human Resource Management

MSc International Management and Business Development

MSc International Operations and Supply Chain Management

MSc International Tourism and Events Management

MSc Marketing

MSc Risk Management

MSc Social Innovation

MSc Luxury Marketing

MSc International Marketing

MSc Sustainable Fashion Business



Find out more about **Two-year masters**

We've got you!

At Glasgow Caledonian, we're with our students from the moment they apply for a place, through to graduation and beyond.

Supporting you and making sure you have the best University experience possible is our priority. Get set for a meaningful learning journey and check out just some of the services we offer to help you soar through your studies.

Personal tutors

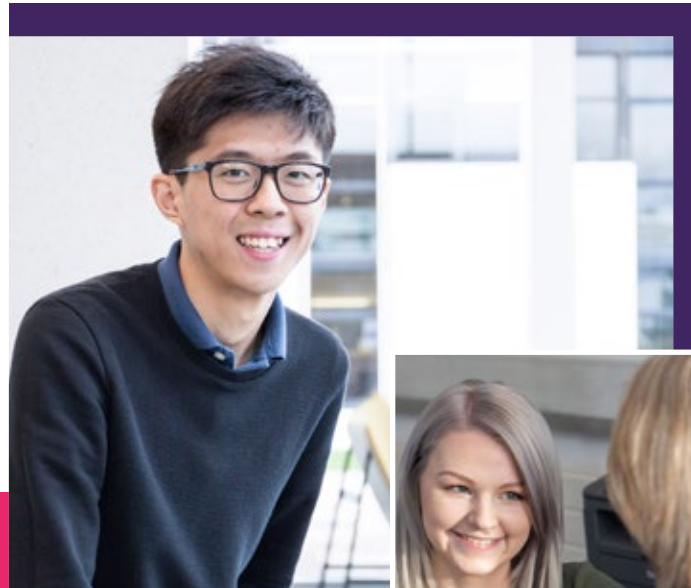
You'll be assigned a personal academic tutor to talk things through one-to-one and receive advice on your academic progress, university experience and general wellbeing. Your tutor will be a member of academic staff from your department or your research supervisor. They can help improve your academic performance and shape your professional and personal growth.

Learning Development Centres

Need help in areas such as academic writing, English for academic purposes, ICT skills or other general study skills? You'll find a learning development centre within each school, staffed by a team of experienced academic development tutors. The centres give professional support to all students, including those with disabilities or specific learning needs.

Where you belong

Great news – as a new student, you'll automatically become a member of our Students' Association. This is where your best interests as a student are represented. You'll receive confidential guidance through the advice centre and build confidence by participating in our many student-run sports activities, clubs and societies.



"I was encouraged, guided and motivated at each step."
Raheel, MSc Electrical Power Engineering graduate

Ready to connect

PALS (Peer Assisted Learning Support) gives you the chance to connect with students already studying your degree, meaning that you can draw on their experiences and ask questions about your course.

By your side

The student wellbeing team offers a free, confidential advice and support service through which you can access one-to-one counselling/therapy, group sessions and workshops to make sure your university experience is the best it can be.

Campus nursery

The campus-based nursery provides a safe and nurturing place for children aged from six weeks to five years old.

Building community on social media

Our Student Communications Team keep current students up to date with life at GCU via our dedicated student social media channels.

Follow us at GCU Student Life on socials for the latest student news, events and campaigns.



Find out more about
Life at Glasgow Caledonian

Your home from home

Hundreds of students from around the world choose to study at Glasgow Caledonian. Glasgow was voted friendliest city in the world and fourth best overall (TimeOut, 2022), with plenty of kindness and humour to see you through.

You can get help with your visa application from our Visa Immigration Support and Advice (VISA) team, a professional service dedicated to supporting international students while they study.

What's the welcome for international students like?

We're here to welcome you. We provide extensive welcome programmes for students in September and January, as well as offering social activities throughout the year. This lets students make new connections and have the best experience Glasgow has to offer.

Will there be other students from my country?

You'll be among students from 120 different countries, as part of an international and welcoming community.

Will I meet local students?

Through our global buddies programme, you'll be matched with a student volunteer who shares your interests. They'll help you settle into life in Scotland.



#1

Glasgow was voted the **friendliest city** in the world (TimeOut, 2022)

Our city

Glasgow was voted the fourth best city in the world (TimeOut, 2022)

Top team

A professional **VISA team**, dedicated to helping you before and during your studies

120

You'll be in good company, among students from **120 countries!**

Settle in

Our **global buddies** programme provides the warm welcome you deserve



Find out more about our **international community**

Are there facilities for my faith and beliefs?

The on-campus Faith and Belief Centre is there to support you whatever your faith and is a welcoming space for prayers, meetings and services throughout the year.

Can I get help finding accommodation?

You can either apply for a place in Caledonian Court – the on-campus residences – or you can rent accommodation in Glasgow from a private registered landlord. There is also privately run student accommodation in the city. You can find some great options through careful online research. Our student accommodation office is available to help you find the perfect home from home and answer any accommodation queries you have.

Can I get help with my visa and immigration advice?

Yes, we have a global network of agent representatives who can help you with your application. We also have a dedicated Visa Immigration Support and Advice (VISA) Team who can assist with the visa process and provide ongoing support when you arrive.

How will I settle in with local students?

Our Peer Assisted Learning Support (PALS) programme connects you to students already studying your course, allowing you to learn from their experience and get to know your new classmates in an informal environment.

Is Glasgow easy to get to?

Yes, you can fly to Glasgow from almost anywhere. There is a major international airport within easy reach of the city campus. Rail services and the motorway network make it easily accessible from the rest of the UK.

We also offer a free Airport Taxi Service for new international students arriving at Glasgow International Airport, preparing to study a full-time course with us.

Discover Glasgow

Coming to university is a chance to discover new interests and meet new people - and Glasgow is home to more than 130,000 students. Whether you're a local or new to the city, you'll be in great company.

Things to do in Glasgow

- Go shopping! Glasgow is the second largest retail centre in the UK
- Visit one of the city's 13 free museums
- Experience one of Europe's richest art collections in the city's many galleries
- Watch a sporting event at Hampden Park Stadium
- Enjoy a famous band at one of the city's popular music venues
- Admire the elegant "Glasgow Style" architecture across the city centre
- Glasgow is literally the 'Dear Green Place' – the translation of its name from Gaelic. Visit one of our 90 stunning green spaces, more per head than any other European city
- Join one of the many walking tours offered around the city.



Find out more about
Study in Glasgow

Explore scenic Scotland

With a beautiful landscape filled with mountains, hills, lochs and rivers, Scotland is the perfect place for getting outside. You'll never be short of things to do when you're not studying.

Things to do in Scotland

- Experience the world-famous Edinburgh Festival and Hogmanay (New Year) festivities
- Explore breath-taking scenery and test your nerve with adventure sports
- Investigate our colourful history of epic battles, castles, myths and legends
- See global music artists or discover up-and-coming bands at world famous venues such as King Tut's or the Barrowlands.

Postgraduate course list

Our wide range of postgraduate courses is just part of what makes Glasgow Caledonian the right place for you. All of our degrees are designed with leading industry input, meaning what you'll have to offer is in demand globally.

We offer courses at our campuses in Glasgow and London with a variety of flexible modes of study, such as part time, distance learning, fast track, and one and two-year course durations. Visit our website for full details.

Glasgow School for Business and Society

ACCA Association of Chartered Certified Accountants

LLM International Commercial Law

MA Multimedia Journalism

MA Television Fiction Writing

MBA Global Master of Business Administration

MBA Global MBA Masters of Business Administration (with additional pathways in Public Health and Insurance)

MSc Accounting, Finance and Regulation

MSc Financial Technology

MSc Human Resource Management

MSc International Banking and Finance

MSc International Fashion Marketing

MSc International Human Resource Management

MSc Professional Accountancy (ACCA route)

MSc Risk Management

MSc (IRM Fast-track) Risk Management

MSc Human Rights

MSc International Business Management

MSc International Economic and Social Justice

MSc International Operations and Supply Chain Management

MSc International Tourism and Events Management

MSc Marketing

MSc Social Innovation

DBA Doctorate of Business Administration

School of Computing, Engineering and Built Environment

MSc 3D Design for Virtual Environments

MSc Applied Data Science in Engineering

MSc Applied Instrumentation and Control

MSc Big Data Technologies

MSc Climate Justice

MSc Cyber Security

MSc Electrical and Electronic Engineering

MSc Electrical Power Engineering

MSc Environmental Forensic Analysis

MSc Environmental Management (Waste, Energy, Water, Oil and Gas)

MSc International Construction Project Management (Energy, Construction Management, Oil and Gas)

MSc Mechanical Engineering

MSc Quantity Surveying

MSc User Experience and Interaction Design

School of Health and Life Sciences

MPH Master of Public Health

MRes Biological Sciences

MSc Advanced Physiotherapy Practice

MSc Advanced Practice (with routes in Diabetes Care and Musculoskeletal Health)

MSc Biomedical Science

MSc Diagnostic Imaging

MSc Diagnostic Radiography (Pre-registration)

MSc Forensic Psychology

MSc Investigative Ophthalmology and Vision Research

MSc Medical Bioscience

MSc Medical Ultrasound

MSc Nursing Studies Adult (Pre-registration)

MSc Nursing: Advancing Professional Practice

MSc Occupational Therapy (Pre-registration)

MSc Physiotherapy (Pre-registration)

MSc Social Work

MSc Theory of Podiatric Surgery

PgD Advancing District Nursing Practice with Specialist Practitioner Qualification

PgD Specialist Community Public Health Nursing (Health Visiting)

DPsych Counselling Psychology

DPsych Health Psychology

DPsych Sports and Exercise Psychology

DPT Doctor of Physiotherapy (Pre-registration)

GCU London campus

DBA Doctorate of Business Administration

MBA Global Masters of Business Administration (pathways in Public Health and Insurance)

MBA Luxury Brand Management

MPH Master of Public Health

MSc Big Data Technologies

MSc Environmental Management (Waste, Energy, Water, Oil and Gas)

MSc Fashion and Lifestyle Marketing

MSc Insurance and Sustainable Risk Management

MSc International Banking and Finance

MSc Quantity Surveying

MSc International Management and Business Development

MSc Luxury Marketing

MSc International Construction Project Management

MSc International Marketing

MSc Sustainable Fashion Business

MSc Fintech



Find out more about
Postgraduate courses

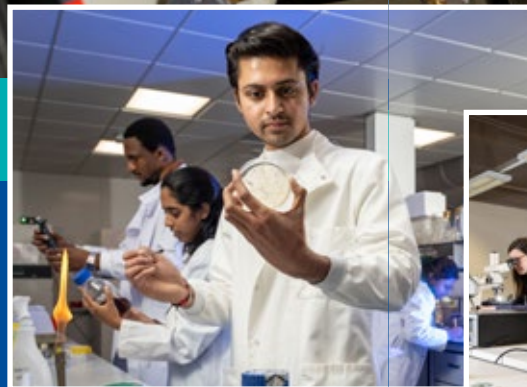
Supercharge your research power

Carrying out research gives you a unique opportunity to focus on developing your own ideas and finding answers to the questions that matter most. Whether it's undertaken as part of your master's or taken further to a PhD or beyond, research allows you to contribute to the bright ideas that are shaping our world.

You'll be supported by a community of academic staff and over 500 research students from more than 50 countries. At Glasgow Caledonian, ideas, expertise and experiences are ignited, shared and challenged.

You'll have access to our innovative research centres, filled with people in pursuit of creativity, collaboration and countless possibilities. With bold, international reputations, their pioneering work is influencing and informing policy decisions and technological advancements globally.

Whether it's a PhD, a Doctorate or a Master of Research, you can choose to progress to the next level of research that can lead to further academia, more demanding leadership roles and sparking change in the world around us.



500

Join over 500 **research students** from more than 50 countries

Thrive

in our **innovative** research centres, all recognised globally

Spark

change in the **world** around us, with research that gives back to communities



Find out more about **Research study**

The Master of Research provides you with solid transferable skills that can boost your career or support a move into doctoral study. With a PhD, you can progress towards a career in academia or become an international expert in your field.

We also offer innovative alternatives to the traditional PhD, designed to enable professionals to use applied research and become influential leaders in their fields:

- Doctorate of Business Administration
- Doctor of Physiotherapy

Research makes a difference. It demonstrates your personal, vocational and academic development. It provides a major contribution to society and the wider global community – and allows you to have an impact on the global challenges of our time.

“I think for me, the best part about doing a PhD here is that everyone is engaged in a project that's having a tangible impact in our communities. When you listen to people talk about their work, what's always included is the ways in which they can connect with things that are happening in the real world, and the way that their research is going to improve the lives of others.”

Maeve, PhD student

Professional accreditation

You'll stand out in the job market with our industry-informed courses that offer professional accreditation.

External, profession-specific bodies accredit many of our courses. Accreditation is a mark of assurance that your degree aligns with the industry standards set by your future employers.

Other accrediting bodies will recognise the content globally, which enhances your learning experience, gives you a head start in your chosen field, and facilitates overseas employment. Accreditation means that your course is validated by the best in the industry and tells prospective employers that you have graduated with the latest and greatest skills needed for the workplace.



Our courses are accredited by organisations including:



- Institution of Engineering and Technology
- Association for Project Management
- The Chartered Institute for IT (BCS)
- Chartered Banker Institute
- Chartered Institute for Securities and Investment
- Chartered Institute of Building
- Chartered Insurance Institute
- The Chartered Institution of Building Services Engineers
- The Chartered Institution of Wastes Management
- The Chartered Institution of Water and Environmental Management
- The Royal Institution of Chartered Surveyors
- Association of Chartered Certified Accountants (ACCA)
- Australian HR Institute
- The Broadcast Journalist Training Council (BJTC)
- Chartered Institute for Securities and Investment Partner University Agreement
- Chartered Management Institute
- Institute of Hospitality
- National Council for the Training of Journalists (NCTJ)
- TMI Recognition Scheme for Tourism Courses in Higher Education
- Chartered Institute of Procurement & Supply
- Association for Project Management
- Chartered Institution of Building Services Engineers Chartered Engineer
- Institute of Environmental Management & Assessment
- Australasian College of Podiatric Surgery
- College of Radiographers
- Consortium for the Accreditation of Sonographic Education
- General Optical Council
- Health & Care Professions Council
- Society and College of Radiographers
- Institute of Biomedical Science
- Nursing and Midwifery Council
- Royal College of Occupational Therapists
- Royal College of Podiatry
- The Chartered Society of Physiotherapy
- The Scottish Social Services Council Accreditation

Money matters

We know that being able to plan your finances and make the most of your money is more important now than ever. That's why we're committed to keeping our tuition fees affordable, with a scholarship package of £2 million every year.

At Glasgow Caledonian, our core purpose is to widen access to higher education, while providing a high-quality student experience and supporting our students to achieve the best graduate employment possible.

Life-changing opportunities, open to everyone

We offer generous discounts and postgraduate funding opportunities to help with the cost of course fees and to provide additional support.

Scholarships

Scholarships can contribute to the cost of tuition fees and travel, and provide you with the support you need to complete your postgraduate qualification. They also provide fantastic opportunities for networking and work experience.

We have a number of scholarships on offer, including course and country-specific options and joint-funded scholarships. One example is our New2GCU scholarship, which means international students (including EU) who study a full-time course are eligible for a discount of up to £4,000 off tuition fees.



£2 million scholarship package available every year

Extra support

- **Loyalty discount:** if you have previously studied here, we are pleased to offer a loyalty scholarship to any returning alumni to the value of a 20% discount for any self-funded tuition fees for every year of study.
- **Early payment discount:** if you're self-funding your postgraduate study, your annual tuition fees are over £5,000 and full payment is made before teaching begins on your course, you may be eligible for an early payment discount of 5% off your tuition fees.
- **Payment plans:** payment plans help spread the cost of tuition fees over eight easy instalments and are available to all self-funded students.
- **Student loans:** student loans are also available depending on the country you live in. For example, Scottish students can apply to the Student Awards Agency Scotland for a loan of up to £11,500.



Find out more about
Funding and finance

We work around you

If your career would benefit from a postgraduate qualification, we can make it happen. We're committed to providing flexible routes into our courses and understand that relevant knowledge and skills can be gained from a variety of learning experiences.

We believe in a flexible approach to higher education, offering part-time and distance learning courses so you can fit your studies around other commitments.



Recognition of prior learning (RPL)

If you don't meet the minimum academic requirements, our RPL scheme takes into account the wider picture. If you can demonstrate relevant work experience or have credits from recognised professional bodies, you may qualify to enter the course you want. You may also be eligible for credits within your course.

RPL allows you to transfer credit gained from one course or institution to another. It also means you can use credit from a previously uncompleted course towards another. The knowledge and skills you've gained through life and work experience, as well as through non-certified learning, development and training, can go towards your RPL.

Mature students

As a mature student, you'll be able to bring a lot of valuable life and work experience to your studies. Adding a qualification to your experience can help you advance in your current career or help you move confidently into a new field.

We also understand that as a mature student you may have more responsibilities and commitments. We're here to help, with support available from our Mature and Part-time Students' Network.

"My road here hasn't been a typical one. (GCU) is a unifying environment to be in, working with individuals for collective gain."

Gavin, PhD Cultural Communities in Glasgow

How to apply

Whether you're applying from within the UK or from further afield, we aim to make the application process as straightforward as possible and consider every application individually.

Apply online

The easiest way to apply for a postgraduate course is online. The online application form is simple to complete and you'll find an apply button next to the course of your choice on our website.

It's easy to upload all the documents needed to support your application and submit everything together. For a small number of postgraduate courses, applications must be submitted via UCAS. Please note that some courses have application deadlines – full details are on our website.

Additional documents

You will need to provide some additional documents to support your application:

- Personal statement
- References – one academic reference minimum
- Academic or professional certificates
- Academic transcripts
- A copy of your passport identification pages

Write your personal statement

Your personal statement is an extremely important part of the application. It gives you the opportunity to share your motivations, background and reasons for applying for your particular course.

International students

Once you have paid your deposit, the University will issue your CAS statement, which is a crucial part of any visa application to study in Scotland. Help with your visa application is available from our dedicated VISA team.

It's important that you're fluent in written and spoken English to get the best out of your UK study experience. You'll find the minimum IELTS scores required for each course and a list of our accepted English Language tests on our website. We can accept a range of alternative tests and other qualifications as suitable evidence of your English Language proficiency. Full details are available on our website.

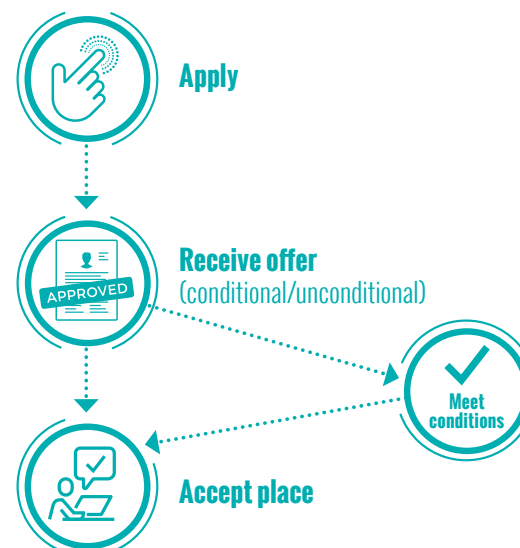


Find out more about
How to apply



Tips for your personal statement

- We want to hear from YOU – make sure you share your own work and views
- Check your text thoroughly and be concise (around one side of A4)
- Explain why you want to join us and study this course at GCU
- Tell us what makes your course's content so appealing
- Share your previous study, employment and work experience to show why this course is the perfect next step
- How will you use this course to achieve your goals post-graduation?
- For international students, tell us why you want to study in the UK



International students



Where we are



Loch Lomond
(45 mins by road)
Iconic Scottish location



Riverside Museum
Kelvingrove Art Gallery and Museum
(20 mins by road)



Glasgow Airport
(15 mins by road)
International airport
connecting the city to
the rest of the world

Edinburgh
(45 mins by road)
Scotland's historic capital city



Buchanan Bus Station (two mins by foot)
Bus links to central Scotland and UK
destinations



Cowcaddens Subway
Station (five mins by foot)
Underground service
around Glasgow



Glasgow Queen Street
Station (10 mins by foot)
Local and national rail links

Buchanan Street
(10 mins by foot)
Centre of 'Style Mile'
shopping area



Glasgow Central Station (15 mins by foot)
UK and local rail links



George Square
Gallery of Modern Art
(10 mins on foot)

Glasgow

Cowcaddens Road, Glasgow, G4 0BA,
Scotland, United Kingdom


gcu.ac.uk

London


40 Fashion Street, London, E1 6PX,
England, United Kingdom

gculondon.ac.uk


 [GlasgowCaledonianUniversity](https://www.facebook.com/GlasgowCaledonianUniversity)

 [@glasgowcaluni](https://twitter.com/glasgowcaluni)

 [@caledoniannews](https://twitter.com/caledoniannews)

 [watchgcu](https://www.youtube.com/watch?v=)

 [glasgow_caledonian_university](https://www.instagram.com/glasgow_caledonian_university)

 [glasgow-caledonian-university](https://www.linkedin.com/company/glasgow-caledonian-university)