





As Principal and Vice-Chancellor, I am delighted to welcome you to Glasgow Caledonian University, one of the UK's most dynamic and innovative universities. I hope you will find this prospectus useful in planning an exciting new chapter in your life. Part-time study has become increasingly important in personal and professional development and, by choosing to study at Glasgow Caledonian University, you are giving yourself a head start on the path to building your future and developing your career.

Each year, nearly 17,000 students from more than 100 countries study at Glasgow Caledonian. Its high-quality and flexible learning and teaching environment offers award-winning facilities, innovative study programmes and strong links with industry and the professions. Our part-time programmes are underpinned by world-leading and internationally excellent research that delivers practical benefits to society. The university's research in health and the built environment were recently rated among the best in the country, in the UK top 10 and UK top 20 respectively (Research Assessment Exercise 2008).

Glasgow Caledonian University offers a range of part-time programmes, many of which you can opt to study via distance learning, online, or on a day-release basis. This year the university launched a range of unique and innovative programmes such as the MSc Sustainable Energy Technology and the PgC in Social Enterprise, developed in response to demand from the growing sector and in partnership with the Scottish Social Enterprise Academy. The university is committed to lifelong learning, for individuals who want to keep up with developments in their field and for those entering higher education for the first time, later in life, and we offer a variety of study routes to support and accommodate the demands of our students' busy lives.

Our vibrant and modern campus at the heart of Glasgow city centre is host to a friendly, cosmopolitan community, and offers the innovative and multi-award-winning Saltire Centre Library, leading-edge technology, modern facilities and convenient student accommodation.

Our international students have just rated Glasgow Caledonian's student experience Scotland's best for the fourth time in a row and in 2008 we were awarded the Times Higher Education Award for Outstanding Support for Overseas Students.

We are committed to ensuring our graduates are global citizens with bright futures, and our part-time programmes are designed to equip students with the skills and knowledge to excel in their careers. If you would like to further explore the opportunities available to you, please visit our website or get in touch with us. I look forward to welcoming you to Glasgow Caledonian University.



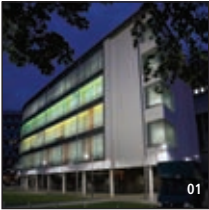
Professor Pamela Gillies
Principal and Vice-Chancellor





With our innovative, modern campus at the heart of Scotland's largest and most cosmopolitan city, Glasgow Caledonian University offers a unique learning experience with all the city has to offer on its doorstep.

Formed in 1993 with the merger of the Queen's College Glasgow and Glasgow Polytechnic, Glasgow Caledonian is now Scotland's fifth largest university and has established a strong reputation for providing relevant and forward-looking programmes. There are so many reasons for choosing to study part-time at Glasgow Caledonian.



Career-focused programmes

The majority of our graduates find work or further study within six months of graduating, and we offer a variety of innovative, specialised courses. The lecturers for your chosen course will have good industry contacts to help you with placements and future career opportunities.



World-class facilities

With the Saltire Centre at its hub, our modern, high-tech campus includes moving library shelves for easy access to books, over 500 computers, wireless internet access, 'think pods' with whiteboards for group study and private 'inflatable igloo' study areas.

Innovative teaching

With a virtual hospital, high-tech broadcasting suite, fashion factory and even an online Second Life campus, Glasgow Caledonian puts a lot of effort into helping you enjoy your programme and gain the professional skills and knowledge employers want.

Award-winning student support

Facilities such as the Base - our one-stop information and support centre offering help with everything from borrowing laptops to getting council tax rebates - have helped us win awards for our student support, including the Times Higher Education Outstanding Support for Overseas Students award. If you are returning to education after a break, you'll find all the support and advice you'll need to help you adapt to university life.

Recognised for research

Our research in the allied health professions was placed among the top 10 universities in the UK in the 2008 Research Assessment Exercise, and our work in rehabilitation sciences was placed top in the UK. Our research in construction and the built environment was rated best in Scotland and in the top 20 in UK.

Designed for today's students

Everything from the highly affordable sports centre, Arc, and the convenient, single-site campus to the Saltire Centre's multiple power points, workstations, study areas and free Wi-Fi is designed with you in mind.

Location, location, location

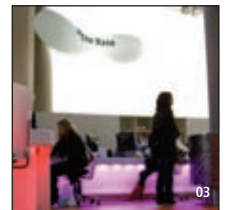
Glasgow is perfect for students. It's got a vibrant live music and arts scene, jumping nightlife, accessible sports facilities, spacious city parks and much more. And it's all within easy access of Scotland's spectacular scenery and world-renowned festivals.

Friendly, close-knit, convenient campus

Our single-site campus is friendly, personal and close-knit. You'll be on first-name terms with your lecturers and the campus design makes it easy to meet friends and classmates for breaks or study sessions. Not only that, but it sits right in the middle of the city nearby all transport links – perfect for our students studying part-time.

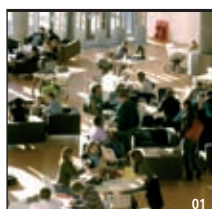
Diverse and cosmopolitan

Glasgow Caledonian is open to anyone, regardless of nationality, age, background and schooling. That means we provide a great opportunity to meet and make friends with a diverse group of new people.



The Saltire Centre (01), The Arc (02), The Base (03).





01

Glasgow Caledonian University's city centre campus is one of the most modern and innovative in the UK. Combining state-of-the-art facilities with a welcoming, friendly atmosphere, the university offers a unique learning environment to students from all over the world.

The Saltire Centre

The Saltire Centre is a state-of-the-art facility designed to support your learning while you study. It is home to the university library which includes over 350,000 books. Gaining access to over 12,000 journals is easy – and most of them are also available online. On any floor with an exit you will find a 'self-issue and return' point or, alternatively, students can visit the loans desk at The Base.

With 1,800 study spaces, the Saltire Centre gives you plenty of room to learn and it offers 500 computers for student use. A wireless network means you can use your own laptop anywhere in the building, or borrow one of the 150 university laptops available to everyone.

Different areas of the centre allow you to take advantage of noisy social interaction areas for group work, but also settle down to silent study on the upper floors. The open-plan learning spaces are similar to modern office environments, which will help you to prepare for moving into a professional environment after graduating. The Saltire Centre is also wheelchair friendly throughout, with software and technology for students with learning or physical disabilities available in a central location.

In the student services mall, you'll find many other important support resources, including careers guidance, funding information, our counselling service, academic registry, disability services, international advisory support, the chaplaincy and the nursery. Saltire Centre staff are very friendly and open and will be happy to help you find the information or support you require.



02



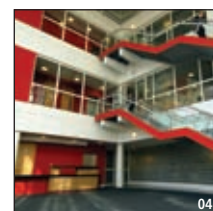
03

The Continuing Professional Development Centre

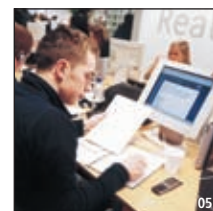
A fairly recent addition to our campus, the Continuing Professional Development (CPD) Centre opened its doors in early 2007, offering a flexible space for both business and study. In addition to providing modern, state-of-the-art seminar rooms for students, the high-tech conference space offers facilities for local, national and international businesses and organisations.

Real Learning Cafés

Our Real Learning Cafés can be found on the ground floors of both the Saltire Centre and the Continuing Professional Development Centre (next to John Smith's campus bookshop). Both are ideal for some relaxed study; you can go online, work on essays or just have a coffee or snack and catch up with friends.



04



05

The Saltire Centre (opposite page) Ground floor group study area (01), Visitors reception point (02), One of the many study areas in the Saltire Centre (03), The Continuing Professional Development Centre (CPD) reception area (04), Real Learning Café (05).

Contact: Academic Registry
W: www.gcal.ac.uk/student/academicregistry

Contact: Admissions
E: admissions@gcal.ac.uk
T: +44 (0)141 331 3334

Contact: Student Records
E: studentrecords@gcal.ac.uk
T: +44 (0)141 331 3338

Contact: Examinations Office
E: exams@gcal.ac.uk
T: +44(0)141 331 3335/3336

Contact: Graduation and Awards
E: graduation@gcal.ac.uk
T: +44(0)141 331 3200

Contact: Careers Service
T: +44(0)141 273 1000

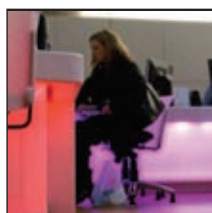
Contact: Chaplaincy
T: +44 (0)141 331 8576

Contact: Disability Service
E: disability@gcal.ac.uk
T: +44(0)141 273 1371
W: www.gcal.ac.uk/student/disability

Contact: Effective Learning Service (ELS)
E: els@gcal.ac.uk
T: +44(0)141 273 1372
W: www.gcal.ac.uk/els

Contact: ICT Support
W: www.gcal.ac.uk/student/ictskills

Contact: International Student Support Services
E: iss@gcal.ac.uk
T: +44(0)141 273 1244



Academic Registry

The Academic Registry deals with all matters of the governance of the university. This includes important issues such as admission and registration on to your programme, assessment regulations, appeals and graduation.

The Academic Registry desk is located on the ground floor of the Saltire Centre, next to the Base. Get in touch using the contact details listed opposite, or drop by the desk in the Saltire Centre, if you have any questions about admissions, registration, your student record, matriculation card, student loans, confirmation of student status letters, ILA, attendance, special factors (assessments) and graduation.



Recognition of Prior Learning (RPL)

We recognise that you can acquire knowledge and skills from a whole range of learning experiences, formal and informal. Our mission to 'provide flexible life-long learning opportunities' to students from a wide variety of backgrounds and at different stages of life means we are pleased to receive your application if you have non-traditional credited or experiential merits. Contact the programme Admissions Tutor for further details.



Careers Service

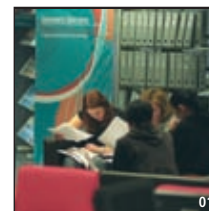
The Careers Service will help you to make the most of your qualifications, skills, personal qualities and experience in planning your future career direction.

Our Careers Advisers provide individual confidential guidance interviews, drop-in sessions, practice interviews and psychometric test sessions (similar to the types used by employers in graduate recruitment).

The service can also help you plan your job search and applications. A wide range of reference, online and take away materials are available on career options, employer directories, recruitment literature and job vacancy information.

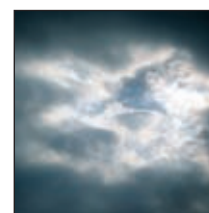
Chaplaincy

We have a team of visiting chaplains from several denominations, including a chaplain to our international students. Christian worship is offered regularly and prayer rooms are provided for Muslim students. Our chaplains provide spiritual and pastoral care for you and can put you in contact with places of worship for the major religious groups in Glasgow. Contact our chaplaincy for more information.



Childcare

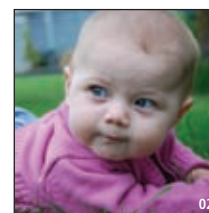
The university provides a nursery service on campus which accepts children aged between six weeks and five years old. Students can apply to place their children there on receipt of an offer of a place on a university programme. Contact the Nursery Manager directly for information about availability, fees etc.



Disability Service

We welcome and encourage applications from students with disabilities. It's our aim to make sure you can access your programme and participate in university life as equally and actively as possible, through flexible teaching and assessment, and by improving access to buildings and technology.

For advice and support we encourage you to make contact with our Disability Service. Staff will be available to answer any questions you may have and help you find out more about the support services on offer. We can assist in organising needs assessments and in making you aware of financial assistance.



Careers Service (01), Childcare on campus facilities are available (02).

Effective Learning Service

Our Effective Learning Service (ELS) is here to help you cope with the practical aspects of your new workload and achieve your academic potential. Wondering how to take helpful lecture notes or structure an effective essay? What about projects, dissertations, oral presentations and preparing for exams?

We offer workshops designed to address these issues and more, and with additional face-to-face and online support and handouts on the various study skills, we are here to assist. Feel free to make an appointment or drop in to see us in the Saltire Centre for an advisory chat.

Free in-session academic writing and speaking English classes are run throughout the academic year.

Contact: John Smith Campus Bookshop
W: www.johnsmith.co.uk/caledonian

Contact: Mental Health & Wellbeing
E: positiveliving@gcal.ac.uk
T: +44(0)141 273 1393
W: www.gcal.ac.uk/student/positiveliving

Contact: Nursery
T: +44(0)141 332 7654

Contact: Print Design Services
E: pds@gcal.ac.uk
T: +44(0)141 331 3691

Contact: Subject Librarian
W: www.gcal.ac.uk/library/findinginfo/librarian



Health

The university does not provide a General Practice service for students. All students should register with a General Practitioner. International students on full-time programmes lasting more than six weeks are eligible for treatment under the National Health Service.

Information & Communications Technology (ICT) Support

You can get help and advice in using the IT facilities at your disposal from the ICT Skills Unit. The ICT Skills Unit also has a non-compulsory module which you can undertake to gain recognition for basic IT achievement.

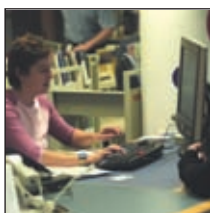


IT Facilities

During semester you have access to computers throughout campus seven days a week. These can be found in the Saltire Centre, learning cafés and specialised teaching labs to name but a few locations.

Off campus you can log onto your webmail account, 'my.caledonian', to access university information, exam results and to apply for modules. 'my.caledonian' keeps you on top of lecture notes and lets you know if your timetable changes. It's also an ideal discussion forum for any points you want to bring to others attention.

You may also find that your programme is supported by our virtual learning environment 'Blackboard'. Similarly, this system is ideal for accessing learning material, staying up to speed with classes and keeping in touch with lecturers and other students.



International Student Adviser

Our adviser to international students is available to provide information before you join the university, and will advise and support you during your studies, whatever your needs may be. Our adviser provides specialist advice on immigration, funding, employment and cultural and personal issues. A programme of social activities is organised. You will receive a 'Welcome Pack' prior to arrival at the university and an induction meeting is arranged to help with your orientation. If you need information or assistance during your time at Glasgow Caledonian, our Student Adviser will be happy to help you.

John Smith's Bookshop

When you need to purchase essential text books, John Smith's Bookshop is ideally located on campus. The shop is open Monday to Friday, 9am to 5.30pm. If they don't already stock the book you need, it can often be ordered in for you.

There's also a second-hand service available, offering cash back for unwanted text books. A list of titles is available in store.

Mental Health and Wellbeing Service

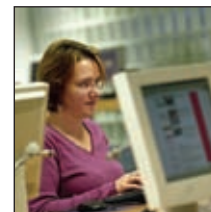
The Mental Health and Wellbeing team are here to help you with any emotional difficulties from homesickness to longer term issues. We work closely with other Learner Support teams, the NHS and other public services, so are happy to recommend ways of improving your overall wellbeing. The service works on a drop-in basis on Wednesday mornings and Thursday evenings.

Appointments for initial single sessions can be arranged at short notice. All calls are welcome and enquiries and sessions are confidential.



Print Design Services

Print Design Services (PDS) are the university's experts in print and will assist any students seeking to copy, bind or laminate documents. PDS' Student Binding and Printing Service is convenient, reliable, user friendly and reasonably priced.

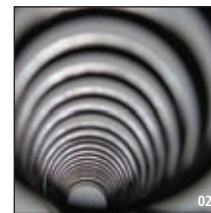


Subject Librarians

Within the university library, in the Saltire Centre, you'll find a team of subject librarians who can:

- help you find information for coursework and dissertations
- show you which databases to use and how to use them
- show you how to use electronic journals and books
- tell you about library services.

You can contact them directly by email or phone, or through The Base enquiry desk in the Saltire Centre.



Student Adviser will support our international students during their studies (01), Print Design Services is user friendly and reasonably priced (02).



Contact: **Students' Association**
 T: +44(0)141 331 3886
 W: www.caledonianstudent.com

Welfare Service
 T: +44(0)141 273 1613/1609

Glasgow Caledonian University Students' Association (GCUSA) is an expanding organisation providing a wide range of services for the benefit of the 15,000 students at Glasgow Caledonian University. Located on campus, the Students' Association has a unique and friendly community.

The Students' Association is primarily here to represent the students of Glasgow Caledonian University within the university and nationally in Scotland and the UK, through NUS. The Executive Committee (elected student officers) work with the university to represent and enable students to enhance all aspects of their university life, making their time at Caledonian as enjoyable, memorable and rewarding as possible.

The Students' Association is a student-led organisation and we encourage all students to participate. One of the best ways to get involved is by joining Caledonian Student Parliament and assisting Executive Committee in ensuring the GCU student experience is the best it can be. You can find out more at www.caledonianstudent.com/studentparliament

With this in mind, we provide a whole range of services for you – from advice and representation to sports, volunteering, societies and much more.

Here to help

The Students' Association Welfare Department provides a free, non-judgemental and confidential support, advice, information and representation service for all Caledonian students.

Whether your concerns are personal, financial or academic, they can provide confidential support and guidance. The department is independent of the university and specialise in providing advice, representation and support to students through formal university processes (e.g. Consideration of Special Factors forms, Academic Appeals and Student Disciplinary).

Welfare Advisers are available from 9am- 5pm, Monday to Friday. Students are able to drop in to the Welfare Department in the North Hanover Street Building, phone the Advisers direct on 0141 273 1613 or 1609 or email enquiries to kirsty.mcgregor@gcal.ac.uk or caroline.miller@gcal.ac.uk

For more information about welfare services, visit www.caledonianstudent.com/welfare

Getting involved in student activities

When you're taking a break from your studies, getting involved in the Students' Association is the ideal way to let off steam and add to your 'Caledonian experience'.

There are numerous ways to participate all student led and many of these student led activities will help you to learn new skills and add an extra dimension to your CV as well as allowing you to make lots of new friends outside of your course. You will also be able to try out new activities through the 'Give it a Go' Programme. www.caledonianstudent.com/giag

You could:

Become a Welfare volunteer

Receive professional training and help the Students' Association to promote health and well-being to your fellow Caledonian students. Previous campaigns have included a Sexual Health and Guidance week and a Wellbeing Fair, which was an event to highlight stress management and give students relaxation tips.

www.caledonianstudent.com/welfare

Become a Nightline volunteer

Nightline is a confidential student listening and information helpline which is run by trained student volunteers to provide support and information overnight when other student welfare services are closed. Nightline is open from Monday to Thursday, 7pm to 7am, during term time and the telephone number is on the back of your matriculation card. Nightline recruits and trains new volunteers at the beginning of each semester.

www.caledonianstudent.com/nightline

Become a Student Rep

Help to improve your experience at university, as well as that of your fellow students, by representing their views at a variety of levels. You'll be able to work with university staff, sit on committees and campaign on particular issues as a Class Rep, a Programme Rep or a School Rep. Full training is provided.

www.caledonianstudent.com/studentreps

Become a Media volunteer (Student Magazine or Student Radio)

Join Re:Union or the Radio Caley team. You can write and edit the student magazine called Re:Union, or present, edit or assist in the running of the student radio station. Both are great ways to hone your communication skills.

www.caledonianstudent.com/re:union or www.caledonianstudent.com/radiocaley

Sports and societies

Being involved in one or more of the Students' Association's many societies is a great way of meeting like-minded folk. At Glasgow Caledonian, there are a number of societies covering a wide range of areas including religion, general life and music. Additionally, many students form programme-based societies, organising activities or just creating the opportunity to ask or give advice to other students.

www.caledonianstudent.com/societies

Our sports clubs cater for all levels from beginner to elite athletes, so you're bound to find something to suit your needs. Sports clubs provide the opportunity to be actively involved in university life, stay fit and healthy, meet new friends, and also represent the university in sporting competition. The clubs provide facilities, coaching, equipment, training, transport and much more.

www.caledonianstudent.com/sport

Sporting clubs include:

- Athletics
- Badminton
- Basketball
- Football
- Golf
- Gymnastics
- Hockey
- Horse Riding
- Kayaking
- Mountaineering
- Muay Thai Boxing
- Netball
- Rugby
- Skiing
- Snowboarding
- Swimming
- Tennis
- Tae Kwon Do
- Tei Karate
- Trampolineing
- Volleyball

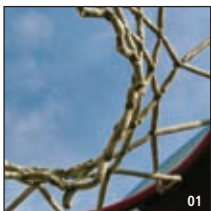
Societies include:

- Environmental
- Choir
- Christian Union
- International Students
- Muslim
- Occupational Therapy
- Hellenic
- Paintball
- Juggling
- Photographic

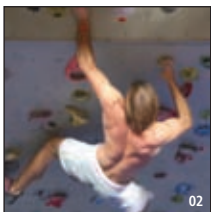
Student Leaders Programme

The Student Leaders Programme is a rapidly expanding programme run jointly between the university and the Students' Association to recognise and develop student leaders at Glasgow Caledonian University.

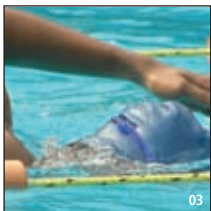
There are three levels of the programme to complete – bronze, silver and gold. After completing each one you will receive a signed certificate from the University Principal and Student President as testament to your citizenship and leadership with the Glasgow Caledonian University community. www.caledonianstudent.com/slp



01



02



03

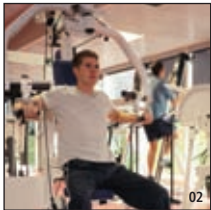
Basketball (01), Climbing (02), and Swimming (03... just some of the sporting clubs on offer.



Contact: Arc
 E: arc@gcal.ac.uk
 T: +44(0)141 331 3116
 W: www.gcal.ac.uk/arc



Looking after yourself doesn't have to be hard slog, it can be enjoyable, sociable, relaxing and energising. It is our aim to make sure that regardless of age, fitness level, body shape or previous exercise experience you are at your ease when using our facilities. Arc isn't about 'fitness fanatics' and perfect physiques, it's a place that everyone can use to look after their health. You don't have to be a student at Glasgow Caledonian to use Arc so you are welcome to bring non-student friends or family along to keep you company.



Group Fitness Classes

Whether you want to push yourself to the limit or take things at an easier pace there's a range of classes for you to try. These include Body Pump, Indoor Cycling, Circuit Training and Body Attack. All the classes cater for people of different abilities and fitness levels, although overall some are a little easier than others! Arc staff will be happy to advise on the most suitable class for you.



Arc Sports Clubs

Sports Club activities include Table Tennis, Badminton, Muay Thai Boxing, Karate, Basketball and many more indoor games and martial arts. You can also book the halls to play sports, including 5-a-side football and badminton, on a more casual basis.

Opening Times

- Monday: 07.30-20.30
- Tuesday: 07.30-20.30
- Wednesday: 07.30-20.30
- Thursday: 07.30-20.30
- Friday: 07.30-19.30
- Saturday: 10.30-16.30
- Sunday: 10.30-16.30

The Gyms

The upper gym area is designed primarily for beginners and includes stretching and relaxation areas, light free-weights and a range of indoor bikes, cross-trainers and other cardiovascular and resistance exercise machines.

The downstairs gym area is geared towards intermediate and more advanced exercisers and you'll find a good selection of Olympic weights as well as dumbbells and modular resistance training equipment.

Health and Beauty Treatments

As well as the opportunities for becoming more physically active and benefiting your overall health, we provide beauty therapy services including waxing, massage, facials, and massage and a hairdressing salon.

Membership

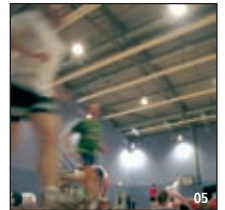
There are a number of different membership options, including monthly on-line payments and 'pay as you go'.

For most students the best option is to buy a low cost Gym and Sports membership package which gives full membership of Arc as well as all the different sports clubs and activities organised by our Students' Association. These include outdoor pursuits, such as hill-walking and canoeing and other sports such as rugby, hockey and swimming which don't take place in Arc itself.

Sports Bursary Programme

Students who are endeavouring to train and compete at a high level in competitive sport whilst studying may apply for a place on the Sports Bursary Programme. This is designed to support successful applicants in combining their academic work with pursuing their chosen sport.

For more information about any of the above, or if you have any questions about Recreation and Health in general, please drop in and speak to Arc staff or visit www.gcal.ac.uk/arc



Yoga (01), Lower Gym (02), Upper Gym (03), Boxercise (04), Circuit Training (05), Body Pump (06), Body Attack (07)... some of the classes and facilities available at Arc.

12 Lifelong Learning

Widening Participation/SCQF/Credit Transfer/RPL/Articulation/Transition and Progression

Contact: Ruth Whittaker

E: r.g.whittaker@gcal.ac.uk

T: +44(0)141 273 1322

Centre Research in Lifelong Learning (CRLI)

Research in Lifelong Learning and Higher Education

Contact: David Smith

E: D.N.Smith@gcal.ac.uk

T: +44(0)141 331 3637

Centre Research in Lifelong Learning (CRLI)



Lifelong Learning has become an increasingly important part of educational policy and provision in modern society. Glasgow Caledonian University is keen to support the developments in this area and the university wishes to provide flexible provision which will encourage students to engage in Lifelong Learning.

Through the Scottish Credit & Qualifications Framework (SCQF), the university aims to provide flexible pathways into and through our programmes. Through the Credit Transfer and Recognition of Prior Informal Learning (RPL), we aim to provide opportunities for students to gain credit for appropriate prior learning. Details of arrangements for entry to specific programmes should be discussed directly with the appropriate admissions tutor.



The Centre for Research in Lifelong Learning (CRLI) is a joint centre between Glasgow Caledonian University and the University of Stirling. The centre maintains an infrastructure for the promotion and support of research in lifelong learning and has a vigorous programme of activities across a broad spectrum of Lifelong Learning. A key feature of CRLI is research at the policy and practice interface across the following themes: widening participation; social inclusion, equality and diversity; organisational configuration and change in colleges and universities; work related and experiential learning; credit and qualification frameworks; transitions and linkages between different learning contexts.

The centre places considerable emphasis on comparative perspectives on Lifelong Learning in its work. In addition to its programme of research, the centre also organises a series of forums and seminars on Lifelong Learning which are attended by a wide range of members of the research, policy and practice communities.

The centre welcomes students wishing to register for research degrees on topics within the field of Lifelong Learning. This can include MPhil and PhDs. The university is particularly keen to encourage students who wish to undertake postgraduate study in the field of Lifelong Learning through its Learning Contract Framework which includes qualifications up to Prof Dip level. These opportunities will be of particular interest to staff who are working in the field of Lifelong Learning in further education colleges, universities, training organisations, local enterprise companies and other organisations involved in the field of Lifelong Learning (see the Learning Contract Framework on the opposite page for further details).



Contact: **Caroline Tuff**
 E: c.tuff@gcal.ac.uk
 T: +44(0)141 273 1277
 W: www.gcal.ac.uk/scwbl

Mode of study and duration:

Work Based Learning, 1-3 years dependent on level of award, entry qualifications and any RPL.

Professional Doctorate:

Negotiable, minimum 3 years.

Fees and funding:

Students are either self-funded or sponsored by their employer.

Programme features:

MSc Lifelong Learning & Development; University thematic - Bespoke for organisations; Individually designed.

Levels of Award:

Masters programmes:

- Postgraduate Certificate
- Postgraduate Diploma
- Masters of Science.

Postgraduate work based learning programmes aim to maximise your potential to develop new knowledge and skills which you can apply directly in your workplace. The programmes are not taught in the traditional sense, but are supported by a range of academics from the university who will provide subject specific content in named academic areas and help you to negotiate and design your own assessments. Programmes are delivered through a mix of workshops, online learning and directed learning as appropriate to each subject area or programme theme. There are a range of options:

Thematic programmes

Currently we have one thematic programme running, the **MSc in Lifelong Learning and Development**. It will be of interest to those with an interest in policies, practices and principles of Lifelong Learning including teachers, community education, trade union learning reps and local council officers with a remit for Lifelong Learning. A thematic Learning Contract programme will run to an agreed timeline, but can commence at any point in the calendar year. As well as the benefit of learning through work based projects, you will be working with others who share similar working contexts.

Company bespoke

We currently offer opportunities to build on company provided staff development, including professional body programmes by designing work based programmes that will be tailored to the needs of specific companies. Clients include the Institution of Railway Operators, North Lanarkshire Council, South Lanarkshire Council and Strathclyde Police Training College.

Individual programmes

These programmes are negotiated entirely by you, in terms of dictating the content of the academic programme and the assessment methods. They resemble research-based degrees. This offers a flexible and individualised programme of development. It is recommended for those who have a clear vision of how and where they need to develop in order to progress their career. You require a degree of self-motivation to take on this type of programme. You set your own programme in terms of both outcomes and pace.

Entry requirements into Master's programmes are a good Honours degree (or equivalent).



Contact: Admissions Office
 E: admissions@gcal.ac.uk
 T: +44 (0)141 331 3334
 W: www.gcal.ac.uk/study/part-timedegrees/howtoapply

Application

You can apply for most of our part-time programmes using the standard university application form. Alternatively you can download one from www.gcal.ac.uk/study/part-timedegrees/howtoapply

Downloading the application form will also allow you to complete the form electronically.

Some programmes have different application procedures. Check the application section on the programme's entry before applying. You can also use the contact information there to find out the closing date. Return your completed form to the admissions office.

Research

Research application forms for the higher degrees of PhD and MPhil are available from the Graduate Centre, www.gcal.ac.uk/graduatecentre/students/forms

However, students wishing to undertake research should contact the relevant academic school directly in the first instance. A contact for research opportunities available in each of the schools can be found on the schools web pages:

- School of the Built and Natural Environment: www.gcal.ac.uk/bne
- Caledonian Business School: www.gcal.ac.uk/cbs
- School of Engineering and Computing: www.gcal.ac.uk/sec
- School of Health: www.gcal.ac.uk/shsc or www.gcal.ac.uk/nmch
- School of Law and Social Sciences: www.gcal.ac.uk/sls
- School of Life Sciences: www.gcal.ac.uk/lss

There are six Research Councils which may be able to provide support for research studies:

- Biotechnology and Biological Sciences Research Council (BBSRC)
- Engineering and Physical Sciences Research Council (EPSRC)
- Economic and Social Research Council (ESRC)
- Medical Research Council (MRC)
- Natural Environment Research Council (NERC)
- Particle Physics and Astronomy Research Council (PPARC)
- The Arts and Humanities Research Council (AHRC)

Applications may be made directly to the ESRC (information available from our Careers Service). Applications to all other Research Councils must be submitted through the appropriate academic school within the university.

The studentships consist of a maintenance grant, payment of approved fees and dependents' and other allowances. To be eligible for an award a candidate should normally possess at least an upper second-class honours degree or equivalent.



Overseas students

Overseas students are not permitted on a students visa to study on a part-time basis. If you are here on another visa you may be able to study on a part-time basis. Please contact our International Office on +44 (0) 141 333 8675 or international@gcal.ac.uk to find out more.

Help with your fees

If this is your first degree and you are on certain benefits or have a low income (about the same level as benefits), you may be entitled to a 'fee waiver', so you won't have to pay all or some of your tuition fees. You can get an application form by asking at the Base in the Saltire Centre. If you can get your fees waived, we will send you a confirmation letter.

If you're not eligible for a fee waiver, ILA Scotland, which is a Scottish Government scheme, may help you pay for learning on many of our part-time courses. You must be 16 or over, live in Scotland and have an income of £22,000 a year or less, or be on benefits. There are two types of account available:

£200 accounts: Certain part-time courses are eligible for this funding. There are some things you need to do before you start your course to use the £200 ILA, so you should start the process as soon as you decide you want to study with us. You can find all the details on our ILA web page or contact our ILA administrator.

£500 accounts: If you are studying on a part-time higher education course at Scottish Credit and Qualification Framework (SCQF) level 7-11 i.e. Higher National Certificate (HNC), Higher National Diploma (HND), undergraduate degree, taught postgraduate certificate, diploma or degree, Professional Development Award (PDA) or Continuing Professional Development (CPD) course, you may be eligible for this funding. You will also need to achieve 40 SCQF credits or more per academic year. You can find more information on our ILA web page or contact our ILA administrator.

You can only have one type of account. For more information visit our website www.gcal.ac.uk/student/money/funds/ila or contact our ILA administrator.

Professional and Career Development Loans

This is a bank loan to help pay for courses which lead to employment or enhance job skills. The Learning and Skills Council pay interest on the loan while you are learning (normally up to a maximum of two years) and up to a month afterwards. New courses are not eligible (the course must have run for at least a year). Our learner provider number is 1680. For more information and advice, or to request an application pack, call the helpline on **0800 585 505**.



Other support

You may be able to apply to the Discretionary Fund (previously known as the Hardship Fund) for help towards study costs, travel or childcare costs whilst attending classes. You can pick up an application form from the Base on level 0 of the Saltire Centre or download one from our website.

If you have a disability, and are studying at least 50% of a full-time course, you may be eligible for the Disabled Students' Allowance (DSA) from the Student Awards Agency for Scotland. Contact our Disability Service if you would like help with your application.

Money Web Pages

If you have other funding questions, the Money pages on our websites may help you:

www.gcal.ac.uk/student/money

European Community Programme

The mobility of students throughout the European Community is encouraged by programmes such as SOCRATES, LEONARDO and LINGUA. There are many other community support programmes including TEMPUS, The Jean Monnet Action and The Human Capital & Mobility Programme. Further information is available from the Commission of the European Communities by contacting the address included in the further information section of this page.

Further Information

Contact: Further Information and Advice

E: funding@gcal.ac.uk

T: +44 (0)141 273 1376

W: www.gcal.ac.uk/learnersupport/funding

Contact: Disability Service

E: disability@gcal.ac.uk

T: +44 (0)141 273 1371

W: www.gcal.ac.uk/student/disability

Contact: ILA administrator: Moyra Templeton

E: M.Templeton@gcal.ac.uk

T: +44 (0)141 331 3064

W: www.gcal.ac.uk/student/money/funds/ila

Contact: International Office

E: international@gcal.ac.uk

T: +44 (0)141 331 8675

W: www.gcal.ac.uk/international

Contact: ILA Scotland

T: 0808 100 1090

W: www.ilascotland.org.uk

Contact: Professional and Career Development Loans

T: 08000 585 505

W: www.learnirectscotland.com/help/funding

Contact: Commission of the European Communities,
DGX11, 200 Rue de la loi, B-1049, Brussels, Belgium



School of The Built and Natural Environment

Award	Programme Title	Entry Requirements
BSc (Hons)	Building Surveying	School leavers: In the Scottish Framework Qualifications, applicants must have passed at least four subjects at Higher level with grades totalling a minimum of 270 UCAS Tariff points. Alternatively, in the General Certificate of Education A-level, Advanced Subsidiary and Vocational A-levels, a minimum of three full A-levels, with an overall minimum total of 270 UCAS Tariff points. Advanced Entry: An HNC or HND (15 merits) in an appropriate Built Environment related programme and relevant professional experience. Mature applicants: who have relevant experience rather than traditional entry qualifications may also be considered.
BSc/BEng (Hons)	Building Services Engineering	Contact the Programme Administrator for details.
BSc (Hons)	Construction Management	Higher English and Maths are desirable. It is also advisable to consider subjects in applied sciences. Advanced entry may also be available for students who hold an HNC or HND in Construction Management. Applicants with HNC/HND qualifications will be considered for advanced entry based on the content of their programme of study and evidence of level of achievement. It is also a condition of entry that students are in full-time employment, working in a built environment discipline and at a level which is compatible with the level of study.
BSc (Hons)	Environmental Civil Engineering	A mathematics background is beneficial and candidates should have 270 UCAS Tariff points or equivalent. Applicants for part-time study will be considered on the basis of their individual work experience and educational attainments.
BSc (Hons)	Fire Risk Engineering	Applicants to Level 1 are expected to have gained at least 4 Highers. Applicants with HNC/HND qualifications will be considered for advanced entry based on the content of their programme of study, evidence of level of achievement and, where appropriate, work experience. Normally applicants will also be required to attend for interview.
BSc (Hons)	Property Management & Valuation	Contact the Programme Administrator for details.
BSc (Hons)	Quantity Surveying	School leavers: 270 UCAS Tariff points, including English and Maths at minimum Standard Grade 2 or equivalent. Appropriate SQA modules may also be taken into account. Advanced Entry: An HNC or HND in Quantity Surveying. Mature applicants: who have relevant experience rather than traditional entry qualifications are encouraged to apply.
MSc	Building Services Engineering	Contact the Programme Administrator for details.
MSc	Construction Economics	This programme is intended to be accessible to applicants from a range of backgrounds. The normal entry qualification is an Honours degree (2:2 and above). Applicants with appropriate professional experience are also considered.
MSc	Construction Management	The programme is designed to accept Honours degree graduates (2:2 and above) or equivalent in any discipline associated with the construction and property industry or Corporate Membership of a construction or property-related professional body (e.g. RICS, RIAS, CIOB). Candidates without formal degree level qualifications may be accepted on to the PgD programme subject to relevant industry experience and discussions with the admissions tutor.
MSc	Energy and Environmental Management	An Honours degree or equivalent. Exceptionally candidates without formal degree qualifications but relevant experience may be admitted to the programme and their progress to MSc would depend on performance in the initial modules.
MSc	Real Estate Management	The programme is intended to be accessible to applicants from a wide range of backgrounds. The normal entry qualification is an Honours degree (2:2 and above). Applicants with appropriate professional experience are also considered.
MSc	Sustainable Energy Technology	A second-class honours degree in engineering, physics or other technical subject. In exceptional circumstances, applicants without the appropriate degree qualification may be considered on individual merit. Such consideration may apply particularly to part-time and mature applicants who are working or who have worked in a technical capacity, especially in energy-related positions.
MSc	Waste Management	An Honours degree or equivalent. Exceptionally candidates without formal degree qualifications but relevant experience may be admitted to the programme and their progress to MSc would depend on performance in initial modules.

Mode of Study	Fees/Funding	Duration	Contact	How to apply
Part-time	Level 1 - £2,000 / all other levels: £1,750 per year.	2 - 4 years	Programme Administrator t: 0141 331 3170 e: schoolbne@gcal.ac.uk w: www.gcal.ac.uk/bne	Download an application form at www.gcal.ac.uk/study/part-timedegrees/howtoapply
Part-time	Level 1 - £2,000 / all other levels: £1,750 per year.	4 - 5 years	Programme Administrator t: 0141 331 3170 e: schoolbne@gcal.ac.uk w: www.gcal.ac.uk/bne	Download an application form at www.gcal.ac.uk/study/part-timedegrees/howtoapply
Part-time (Blended learning)	£3,000 per year.	5 years	Programme Administrator t: 0141 331 3170 e: schoolbne@gcal.ac.uk w: www.gcal.ac.uk/bne	Download an application form at www.gcal.ac.uk/study/part-timedegrees/howtoapply
Part-time	Level 1 - £2,000 / all other levels: £1,750 per year.	3 - 5 years	Programme Administrator t: 0141 331 3170 e: schoolbne@gcal.ac.uk w: www.gcal.ac.uk/bne	Download an application form at www.gcal.ac.uk/study/part-timedegrees/howtoapply
Part-time	Level 1 - £2,000 / all other levels: £1,750 per year.	5 years	Programme Administrator t: 0141 331 3170 e: schoolbne@gcal.ac.uk w: www.gcal.ac.uk/bne	Download an application form at www.gcal.ac.uk/study/part-timedegrees/howtoapply
Part-time	Level 1 - £2,000 / all other levels: £1,750 per year.	5 years	Programme Administrator t: 0141 331 3170 e: schoolbne@gcal.ac.uk w: www.gcal.ac.uk/bne	Download an application form at www.gcal.ac.uk/study/part-timedegrees/howtoapply
Part-time	Level 1 - £2,000 / all other levels: £1,750 per year.	5 years	Programme Administrator t: 0141 331 3170 e: schoolbne@gcal.ac.uk w: www.gcal.ac.uk/bne	Download an application form at www.gcal.ac.uk/study/part-timedegrees/howtoapply
Part-time	£2,800 per year.	2 years	Programme Administrator t: 0141 331 3170 e: schoolbne@gcal.ac.uk w: www.gcal.ac.uk/bne	Download an application form at www.gcal.ac.uk/study/part-timedegrees/howtoapply
Part-time	£2,800 per year.	2 years	Programme Administrator t: 0141 331 3170 e: schoolbne@gcal.ac.uk w: www.gcal.ac.uk/bne	Download an application form at www.gcal.ac.uk/study/part-timedegrees/howtoapply
Part-time	£2,800 per year.	2 years	Programme Administrator t: 0141 331 3170 e: schoolbne@gcal.ac.uk w: www.gcal.ac.uk/bne	Download an application form at www.gcal.ac.uk/study/part-timedegrees/howtoapply
Part-time	£2,800 per year.	2 years	Programme Administrator t: 0141 331 3170 e: schoolbne@gcal.ac.uk w: www.gcal.ac.uk/bne	Download an application form at www.gcal.ac.uk/study/part-timedegrees/howtoapply
Part-time	£2,800 per year.	2 years	Programme Administrator t: 0141 331 3170 e: schoolbne@gcal.ac.uk w: www.gcal.ac.uk/bne	Download an application form at www.gcal.ac.uk/study/part-timedegrees/howtoapply
Part-time	£2,800 per year.	2 years	Programme Administrator t: 0141 331 3170 e: schoolbne@gcal.ac.uk w: www.gcal.ac.uk/bne	Download an application form at www.gcal.ac.uk/study/part-timedegrees/howtoapply
Part-time	£2,800 per year.	2 years	Programme Administrator t: 0141 331 3170 e: schoolbne@gcal.ac.uk w: www.gcal.ac.uk/bne	Download an application form at www.gcal.ac.uk/study/part-timedegrees/howtoapply

Caledonian Business School

Award	Programme Title	Entry Requirements
BA	Business and Management	Higher Grade BBCC; A level CC; ILC BBCC; HNC/HND in a relevant discipline; Candidates with appropriate experience may be considered through the Recognition of Prior Learning (RPL).
BA	Occupational Health and Safety Management	A recognised first degree or NEBOSH National Certificate/HNC or several years in health and safety related activities or equivalent qualification.
	ACCA	HND/HNC or recognised Accounting degrees are given exemption which may vary according to subjects studied.
	CIMA	No minimum entry requirements, but a good standard of maths and competence in the English language will be required before the course is started.
	CIPFA	Students with a wide variety of educational backgrounds, including Highers, A-Level or equivalent students, HNC / HND in Accounting or Degree students, Accounting Technicians.
MAcc	Master of Accounting (Oil and Gas)/(Public Sector Financial Management)/(Corporate Governance) (Micro-Finance)/(Social Entrepreneurial Finance) (Internal Audit)	Equivalent to a UK honours degree or equivalent in financial management, actuarial studies, economics, finance, mathematics, statistics, accounting, or a related subject or holder of a final relevant qualification from a professional body.
MSc/PgD/ PgC	Banking, Finance and Risk Management	Applicants must hold a degree in banking, actuarial studies, economics, finance, accounting and investment.
MFin	Master of Finance	Equivalent to a UK honours degree or equivalent in financial management, actuarial studies, economics, finance, mathematics, statistics, accounting, or a related subject or holder of a final relevant qualification from a professional body.
MSc	Financial Services, Risk and Operations	Applicants would normally hold a degree in financial services, insurance, banking, actuarial studies, business, management, economics, finance, accounting, investment or any financial services related subject. However, where appropriate, students with an unrelated degree wishing to move in to this area will be considered.
MSc	Human Resource Management	A business related degree. Relevant HND in a business related area plus relevant work experience.
MSc	International Events Management	As the programme is in a specialist area, applicants are likely to hold an Honours degree in a cognate area e.g. sports management, events management. Alternatively to have any first degree and significant professional experience in the events sector.
MSc	Risk Management	The equivalent of a UK business or non business undergraduate degree or equivalent professional qualification.
PgC	Social Enterprise	An undergraduate degree or equivalent or related work experience at an advanced level.
BA	Work Based Learning	HND or equivalent. Please contact Programme Administrator for details of specific entry requirements.
MRes	Master of Research (Business and Management)	A 2:1 or first class Honours degree or a Masters degree

Mode of Study	Fees/Funding	Duration	Contact	How to apply
Evenings	£235 per module. Self or employer funded.	4 - 5 years	The Admissions Team t: 0141 331 3315 e: bapbusmgt@gcal.ac.uk w: www.gcal.ac.uk/cbs	Download an application form at www.gcal.ac.uk/study/part-timedegrees/howtoapply
Once a week (Wednesday) 2pm - 8pm	£2,100 per year. (£350 per module).	2 years	The Admissions Team t: 0141 331 3156 e: BASafeMgt@gcal.ac.uk w: www.gcal.ac.uk/cbs	Download an application form at www.gcal.ac.uk/study/part-timedegrees/howtoapply
Evenings	Fundamental level: £400 per paper, Professional level: £450 per paper, Employer funded.	1 - 2 years	The Admissions Team t: 0141 331 8746 e: acca@gcal.ac.uk w: www.gcal.ac.uk/cbs	Download an application form at www.gcal.ac.uk/study/part-timedegrees/howtoapply
Evenings	Certificate: £350 per paper, Managerial: £400 per paper, Strategic: £450 per paper, Employer funded.	1 - 2 years	The Admissions Team t: 0141 331 8746 e: cima@gcal.ac.uk w: www.gcal.ac.uk/cbs	Download an application form at www.gcal.ac.uk/study/part-timedegrees/howtoapply
Day Release	Certificate / Diploma: £400 per paper, FTPC: £750 per module, Employer funded.	1 - 2 years	The Admissions Team t: 0141 331 8747 e: cipfa@gcal.ac.uk w: www.gcal.ac.uk/cbs	Download an application form at www.gcal.ac.uk/study/part-timedegrees/howtoapply
Part-time (Day Release)	£630 per module and £1,340 for Dissertation.	2 - 3 years	The Admissions Team t: 0141 331 3333 e: accounting@gcal.ac.uk w: www.gcal.ac.uk/cbs	Download an application form at www.gcal.ac.uk/study/part-timedegrees/howtoapply
Day-release and Evenings	£6,500.	1 - 2 years	The Admissions Team t: 0141 331 3511 e: MScFinS@gcal.ac.uk w: www.gcal.ac.uk/cbs	Download an application form at www.gcal.ac.uk/study/part-timedegrees/howtoapply
Part-time (Day Release)	£630 per module and £1,340 for Dissertation.	2 - 3 years	The Admissions Team t: 0141 331 3333 e: accounting@gcal.ac.uk w: www.gcal.ac.uk/cbs	Download an application form at www.gcal.ac.uk/study/part-timedegrees/howtoapply
Part-time and / or Distance Learning	Part-time: £630 per module, Distance Learning: £1,000 per module, £1,500 for Dissertation. Employer funded.	1 - 2 years	The Admissions Team t: 0141 331 3511 e: MScFinS@gcal.ac.uk w: www.gcal.ac.uk/cbs	Download an application form at www.gcal.ac.uk/study/part-timedegrees/howtoapply
Evenings	£780 per module or Employer funded.	2 - 3 years	The Admissions Team t: 0141 331 3417 e: MScHRM@gcal.ac.uk w: www.gcal.ac.uk/cbs	Download an application form at www.gcal.ac.uk/study/part-timedegrees/howtoapply
Day Release / Evenings	£2,360 per academic year + £750 for Dissertation. Employer funded.	2 years	The Admissions Team t: 0141 331 3411 e: msciem@gcal.ac.uk w: www.gcal.ac.uk/cbs	Download an application form at www.gcal.ac.uk/study/part-timedegrees/howtoapply
Part-time and / or Distance Learning	Distance Learning: £1,070 per module, Part-time: £630 per module, £1340 for Dissertation. Employer funded.	2 - 3 years	The Admissions Team t: 0141 331 3156 e: MScRisk@gcal.ac.uk w: www.gcal.ac.uk/cbs	Download an application form at www.gcal.ac.uk/study/part-timedegrees/howtoapply
3 weekends per year	£1,995.	One year	The Admissions Team t: 0141 331 8892 e: pgcse@gcal.ac.uk w: www.gcal.ac.uk/cbs	Download an application form at www.gcal.ac.uk/study/part-timedegrees/howtoapply
Work-based plus evening workshops (Tuesdays)	£270 per module.	12 months (minimum)	Caroline Tuff t: 0141 331 1277 e: c.tuff@gcal.ac.uk w: www.gcal.ac.uk/cbs	www.gcal.ac.uk/scwbl
Part-time	£1,700 per year plus £1,000 for Dissertation fee.	1 - 2 years	The Admissions Team t: 0141 331 3426 e: gbu2@gcal.ac.uk w: www.gcal.ac.uk/cbs	Download an application form at www.gcal.ac.uk/study/part-timedegrees/howtoapply

Caledonian Business School

Award	Programme Title	Entry Requirements
MBA	Glasgow Caledonian MBA	UK Honours degree or Graduate diploma with work experience. Alternatively minimum 5 years work experience, 2 of which must be managerial.

School of Engineering and Computing

Award	Programme Title	Entry Requirements
BEng (Hons)	Electronic Engineering	HN qualification and relevant work experience.
BEng (Hons)	Electrical Power Engineering	HN qualification and relevant work experience.
BEng (Hons)	Manufacturing Systems Engineering	HN qualification and relevant work experience.
BEng (Hons)	Mechanical Electronic Systems Engineering	HN qualification and relevant work experience.
MA	3D Design for Virtual Environments	Entry to the MA programme is based on an Honours degree or equivalent in an appropriate discipline, ideally in an arts based subject. Applicants who hold qualifications gained from recognised overseas institutions are also eligible to apply.
MSc	Advanced Computer Networking	Honours degree or advanced qualification in Computer Science; Candidates with appropriate experience may be considered through the Recognition of Prior Learning (RPL).
MSc/PgD	Advanced Computing	Honours degree or advanced qualification in Computer Science; Candidates with appropriate experience may be considered through the Recognition of Prior Learning (RPL).
MSc	Applied Instrumentation & Control	Honours degree in relevant science or engineering subject; Candidates with appropriate experience may be considered through the Recognition of Prior Learning (RPL).
MA	Design Practice Management	To qualify for entry to this programme, students should hold an Honours degree at 2:1 level in a creative or business discipline or equivalent.
MSc	Embedded Systems Design	Honours degree in suitable Electronic Engineering discipline; Candidates with appropriate experience may be considered through the Recognition of Prior Learning (RPL).
MSc	Maintenance Management	Honours degree in an engineering or science subject; Candidates with appropriate experience may be considered through the Recognition of Prior Learning (RPL).
MSc	Mechanical Engineering (with options in Design or Manufacture)	BEng (Hons) degree; Candidates with appropriate experience may be considered through the Recognition of Prior Learning (RPL).
MSc	Mobile Systems Development	Honours degree or equivalent in Computer Science; Candidates with appropriate experience may be considered through the Recognition of Prior Learning (RPL).

Mode of Study	Fees/Funding	Duration	Contact	How to apply
Part-time (Day Release / Evening)	£9,000. Employer or student funded.	2 years	The Admissions Team t: 0141 331 8900 e: themba@gcal.ac.uk w: www.gcal.ac.uk/cbs	Download an application form at www.gcal.ac.uk/study/part-timedegrees/howtoapply

Mode of Study	Fees/Funding	Duration	Contact	How to apply
Day release	£1,200 Annual fee.	4 years	Admissions & Marketing Coordinator t: 0141 331 3277 e: SECCourses@gcal.ac.uk w: www.gcal.ac.uk/sec	Download an application form at www.gcal.ac.uk/study/part-timedegrees/howtoapply
Day release	£1,200 Annual fee.	4 years	Admissions & Marketing Coordinator t: 0141 331 3277 e: SECCourses@gcal.ac.uk w: www.gcal.ac.uk/sec	Download an application form at www.gcal.ac.uk/study/part-timedegrees/howtoapply
Day release	£1,200 Annual fee.	4 years	Admissions & Marketing Coordinator t: 0141 331 3277 e: SECCourses@gcal.ac.uk w: www.gcal.ac.uk/sec	Download an application form at www.gcal.ac.uk/study/part-timedegrees/howtoapply
Day release	£1,200 Annual fee.	4 years	Admissions & Marketing Coordinator t: 0141 331 3277 e: SECCourses@gcal.ac.uk w: www.gcal.ac.uk/sec	Download an application form at www.gcal.ac.uk/study/part-timedegrees/howtoapply
Part-time	£3,400 Annual fee.	2 years	Admissions & Marketing Coordinator t: 0141 331 3277 e: SECCourses@gcal.ac.uk w: www.gcal.ac.uk/sec	Download an application form at www.gcal.ac.uk/study/part-timedegrees/howtoapply
Day release	£2,680 Annual fee.	2 - 3 years	Admissions & Marketing Coordinator t: 0141 331 3277 e: SECCourses@gcal.ac.uk w: www.gcal.ac.uk/sec	Download an application form at www.gcal.ac.uk/study/part-timedegrees/howtoapply
Day release	£2,240 Annual fee or £560 per module (£500 for Dissertation).	2 - 3 years	Admissions & Marketing Coordinator t: 0141 331 3277 e: SECCourses@gcal.ac.uk w: www.gcal.ac.uk/sec	Download an application form at www.gcal.ac.uk/study/part-timedegrees/howtoapply
Block release or distance learning	£2,080 Annual fee.	2 - 3 years	Admissions & Marketing Coordinator t: 0141 331 3277 e: SECCourses@gcal.ac.uk w: www.gcal.ac.uk/sec	Download an application form at www.gcal.ac.uk/study/part-timedegrees/howtoapply
Part-time	£2,240 Annual fee.	2 years	Admissions & Marketing Coordinator t: 0141 331 3277 e: SECCourses@gcal.ac.uk w: www.gcal.ac.uk/sec	Download an application form at www.gcal.ac.uk/study/part-timedegrees/howtoapply
Day release	£2,680 Annual fee.	2 - 3 years	Admissions & Marketing Coordinator t: 0141 331 3277 e: SECCourses@gcal.ac.uk w: www.gcal.ac.uk/sec	Download an application form at www.gcal.ac.uk/study/part-timedegrees/howtoapply
Block release or distance learning	£2,080 Annual fee.	2 - 3 years	Admissions & Marketing Coordinator t: 0141 331 3277 e: SECCourses@gcal.ac.uk w: www.gcal.ac.uk/sec	Download an application form at www.gcal.ac.uk/study/part-timedegrees/howtoapply
Block release or distance learning	£2,080 Annual fee.	2 - 3 years	Admissions & Marketing Coordinator t: 0141 331 3277 e: SECCourses@gcal.ac.uk w: www.gcal.ac.uk/sec	Download an application form at www.gcal.ac.uk/study/part-timedegrees/howtoapply
Day release	£2,680 Annual fee.	2 - 3 years	Admissions & Marketing Coordinator t: 0141 331 3277 e: SECCourses@gcal.ac.uk w: www.gcal.ac.uk/sec	Download an application form at www.gcal.ac.uk/study/part-timedegrees/howtoapply

22 Programmes

School of Engineering and Computing

Award	Programme Title	Entry Requirements
MSc	Network Security	Honours degree or advanced qualification in Computer Science or cognate discipline; Candidates with appropriate experience may be considered through the Recognition of Prior Learning (RPL).
PgC/PgD	.NET Web Systems Development	Honours degree or equivalent in Computer Science. Candidates with appropriate experience may be considered through the Recognition of Prior Learning (RPL).
MSc	Particulate Solids Handling	Applicants should be employed in industry in a subject related to Particulate Solids Handling, will normally be at least 21 years of age at the start of the programme and should have an Honours Degree from a UK institution or equivalent in the areas of science or engineering subject.
MSc	Voice-over IP and Unified Communications	Entry requirements are either an Honours degree or advanced qualification in Computer Science or cognate discipline from a British university or recognised overseas institution, or industrial experience in Computer Networking and an Honours degree.
MSc	Wireless Communication Technologies	Honours degree in relevant science or engineering subject; Candidates with appropriate experience may be considered through the Recognition of Prior Learning (RPL).
MSc	Wireless Networking	Honours degree or advanced qualification in Computer Science or cognate discipline; Candidates with appropriate experience may be considered through the Recognition of Prior Learning (RPL).

School of Health

Award	Programme Title	Entry Requirements
BA (Hons)	Social Work	HNC and SVQ (Social Care) or equivalent. Must successfully complete two pre-requisite modules on a continuing professional development basis through the University. Candidates must normally be sponsored by their employer and also the employer must provide one additional placement to the pool of placements within the West of Scotland Learning Network.
MSc	Health and Social Care (Occupational Therapy)	UK Occupational Therapy Honours degree 1st or 2nd class or equivalent. Unclassified Occupational Therapy degree or professional diploma, normally with at least two years of professional work experience.
MSc	Health and Social Care (Physiotherapy)	The programme is open to Physiotherapists who hold an Honours degree or for those with unclassified degrees or professional diplomas there will usually be a requirement to have at least two years professional experience prior to application. Certain speciality specific modules require the individual to be working in that area for a minimum number of hours per week, e.g. Manual Therapy.
MSc	Health and Social Care (Social Work)	The programme is open to those who hold an Honours degree. Those with unclassified degrees or professional diplomas should have at least two years professional experience prior to application.
MSc	Health and Social Care (Diagnostic Imaging)	The programme is open to HPC Registered Radiographers/Radiotherapists who hold an Honours degree. Those with unclassified degrees or professional diplomas should have at least two years professional experience prior to application. Individual modules can be undertaken by non radiographers.
MSc	Health and Social Care (Medical Ultrasound)	The Medical Ultrasound programme is open to candidates with a 1st degree in a health-related profession. Applicants normally should have been in post-qualification practice for a minimum of 2 years and have negotiated a clinical placement unit and appropriately qualified practice educator to support them during the learning period (normally at least one month supervised experience in ultrasound practice (17.5 hours per week is recommended) immediately prior to commencement of the programme).

Mode of Study	Fees/Funding	Duration	Contact	How to apply
Day release	£2,680 Annual fee.	2 - 3 years	Admissions & Marketing Coordinator t: 0141 331 3277 e: SECCourses@gcal.ac.uk w: www.gcal.ac.uk/sec	Download an application form at www.gcal.ac.uk/study/part-timedegrees/howtoapply
Evenings	£540 per module.	1 - 2 years	Admissions & Marketing Coordinator t: 0141 331 3277 e: SECCourses@gcal.ac.uk w: www.gcal.ac.uk/sec	Download an application form at www.gcal.ac.uk/study/part-timedegrees/howtoapply
Day release	£520 per module (£1,040 for Dissertation).	2 ½ years (approx)	Admissions & Marketing Coordinator t: 0141 331 3277 e: SECCourses@gcal.ac.uk w: www.gcal.ac.uk/sec	Download an application form at www.gcal.ac.uk/study/part-timedegrees/howtoapply
Part-time	Contact school for information.	2 years to PgD level with an additional 3 months to MSc	Admissions & Marketing Coordinator t: 0141 331 3277 e: SECCourses@gcal.ac.uk w: www.gcal.ac.uk/sec	Download an application form at www.gcal.ac.uk/study/part-timedegrees/howtoapply
Day release	£2,680 Annual fee.	2 - 3 years	Admissions & Marketing Coordinator t: 0141 331 3277 e: SECCourses@gcal.ac.uk w: www.gcal.ac.uk/sec	Download an application form at www.gcal.ac.uk/study/part-timedegrees/howtoapply
Day release	£2,680 Annual fee.	2 - 3 years	Admissions & Marketing Coordinator t: 0141 331 3277 e: SECCourses@gcal.ac.uk w: www.gcal.ac.uk/sec	Download an application form at www.gcal.ac.uk/study/part-timedegrees/howtoapply

Mode of Study	Fees/Funding	Duration	Contact	How to apply
Part time day and evening release	£2,300 per year for the continuing professional development modules. As this is an employer based programme, all students must normally have the support of their employer in relation to fees.	Two and a half years part time study and final year of full time study	Admissions Tutor t: 0141 331 3843 e: swadmissions@gcal.ac.uk w: www.gcal.ac.uk/shsc	Download an application form at www.gcal.ac.uk/study/part-timedegrees/howtoapply
Block day release	Fees charged per module: 15 credits £420; 30 credits £840. Dissertation (60 credits) £840. Self/Employer funded.	3 - 6 years with early exit points at PgC/PgD level	Master's Framework Admissions t: 0141 331 8142 e: mfadmissions@gcal.ac.uk w: www.gcal.ac.uk/shsc	Download an application form at www.gcal.ac.uk/study/part-timedegrees/howtoapply
Block day release (Clinical Placement MSc Manual Therapy)	Fees charged per module: 15 credits £420; 30 credits £840. Dissertation (60 credits) £840. Self/Employer funded.	3 - 6 years with early exit points at PgC/PgD level	Master's Framework Admissions t: 0141 331 8142 e: mfadmissions@gcal.ac.uk w: www.gcal.ac.uk/shsc	Download an application form at www.gcal.ac.uk/study/part-timedegrees/howtoapply
Block day release	Fees charged per module: 15 credits £420; 30 credits £840. Dissertation (60 credits) £840. Self/Employer funded.	3 - 6 years with early exit points at PgC/PgD level	Master's Framework Admissions t: 0141 331 8142 e: mfadmissions@gcal.ac.uk w: www.gcal.ac.uk/shsc	Download an application form at www.gcal.ac.uk/study/part-timedegrees/howtoapply
Block day release	Fees charged per module: 15 credits £420; 30 credits £840. Dissertation (60 credits) £840. Self/Employer funded.	3 - 6 years with early exit points at PgC/PgD level	Master's Framework Admissions t: 0141 331 8142 e: mfadmissions@gcal.ac.uk w: www.gcal.ac.uk/shsc	Download an application form at www.gcal.ac.uk/study/part-timedegrees/howtoapply
Block day release (plus Clinical Placement)	Fees charged per module: 15 credits £420; 30 credits £840. Dissertation (60 credits) £840. Self/Employer funded. Students must have secured clinical placement prior to application.	3 - 6 years with early exit points at PgC/PgD level	Master's Framework Admissions t: 0141 331 8142 e: mfadmissions@gcal.ac.uk w: www.gcal.ac.uk/shsc	Download an application form at www.gcal.ac.uk/study/part-timedegrees/howtoapply

24 Programmes

School of Health		
Award	Programme Title	Entry Requirements
MSc	Health and Social Care (Podiatry)	HPC Registered Chiropodist/Podiatrist. Honours degree preferred but consideration is given to those holding unclassified degrees or professional diploma's provided they have at least 1 year of professional work experience. (Newly qualified practitioners with no professional work experience should have a 2:1 honours or above).
MSc	Health and Social Care (Radiation Oncology)	HPC Registered Radiographer (Diagnostic/Therapy) or other appropriately qualified Health Care Professional.
MSc	Health and Social Care (Musculoskeletal Physiotherapy)	The programme is open to Physiotherapists who hold an Honours degree or for those with unclassified degrees or professional diplomas there will usually be a requirement to have at least two years professional experience prior to application. Certain speciality specific modules require the individual to be working in that area for a minimum number of hours per week, e.g. Manual Therapy.
MSc	Health and Social Care (Falls Prevention)	UK Occupational Therapy Honours degree 1st or 2nd class or equivalent. Unclassified Occupational Therapy degree or professional diploma, normally with at least two years of professional work experience.
MSc	Health and Social Care (Employment Rehabilitation)	UK Occupational Therapy Honours degree 1st or 2nd class or equivalent. Unclassified Occupational Therapy degree or professional diploma, normally with at least two years of professional work experience.
MSc	Health and Social Care (Cardiac Rehabilitation)	The programme is open to Physiotherapists who hold an Honours degree or for those with unclassified degrees or professional diplomas there will usually be a requirement to have at least two years professional experience prior to application. Certain speciality specific modules require the individual to be working in that area for a minimum number of hours per week, e.g. Manual Therapy.
MSc	Health and Social Care (Multiple Sclerosis)	The programme is open to Physiotherapists who hold an Honours degree or for those with unclassified degrees or professional diplomas there will usually be a requirement to have at least two years professional experience prior to application. Certain speciality specific modules require the individual to be working in that area for a minimum number of hours per week, e.g. Manual Therapy.
PgC	Health and Social Care (Radiographic Image Interpretation)	HPC Registered Radiographer (Diagnostic/Therapy) or other appropriately qualified Health Care Professional.
PgC	Health and Social Care (MRI Magnetic Resonance Imaging)	HPC Registered Radiographer (Diagnostic/Therapy) or other appropriately qualified Health Care Professional.
PgC	Health and Social Care (Podopaediatrics)	HPC Registered Chiropodist/Podiatrist. Honours degree preferred but consideration is given to those holding unclassified degrees or professional diploma's provided they have at least 1 year of professional work experience. (Newly qualified practitioners with no professional work experience should have a 2:1 Honours or above).
PgC	Health and Social Care (Podiatric Sports Medicine)	HPC Registered Chiropodist/Podiatrist. Honours degree preferred but consideration is given to those holding unclassified degrees or professional diploma's provided they have at least 1 year of professional work experience. (Newly qualified practitioners with no professional work experience should have a 2:1 Honours or above).

Mode of Study	Fees/Funding	Duration	Contact	How to apply
Block day release	Fees charged per module: 15 credits £420; 30 credits £840. Dissertation (60 credits) £840. Fees for modules Pharmacology for Podiatric Surgery and Anatomy & Physiology for Surgical Practice £625 each. Self/Employer funded.	3 - 6 years with early exit points at PgC/PgD level	Master's Framework Admissions t: 0141 331 8142 e: mfadmissions@gcal.ac.uk w: www.gcal.ac.uk/shsc	Download an application form at www.gcal.ac.uk/study/part-timedegrees/howtoapply
Block day release	Fees charged per module: 15 credits £420; 30 credits £840. Dissertation (60 credits) £840. Self/Employer funded.	3 - 6 years with early exit points at PgC/PgD level	Master's Framework Admissions t: 0141 331 8142 e: mfadmissions@gcal.ac.uk w: www.gcal.ac.uk/shsc	Download an application form at www.gcal.ac.uk/study/part-timedegrees/howtoapply
Block day release	MSc Manual Therapy: £4,680, comprising Manual Therapy Modules 1&2 £2,000 (Deposit of £300 required); MT Placement £1,000 - Deposit of £300 required; Evaluating Evidence to Develop Research and Inform Practice £840; Dissertation £840.	3 - 6 years with early exit points at PgC/PgD level	Master's Framework Admissions t: 0141 331 8142 e: mfadmissions@gcal.ac.uk w: www.gcal.ac.uk/shsc	Download an application form at www.gcal.ac.uk/study/part-timedegrees/howtoapply
Block day release	Fees charged per module: 15 credits £420; 30 credits £840. Dissertation (60 credits) £840. Self/Employer funded.	Two and a half years part time study and final year of full time study	Master's Framework Admissions t: 0141 331 8142 e: mfadmissions@gcal.ac.uk w: www.gcal.ac.uk/shsc	Download an application form at www.gcal.ac.uk/study/part-timedegrees/howtoapply
Block day release	Fees charged per module: 15 credits £420; 30 credits £840. Dissertation (60 credits) £840. Self/Employer funded.	Two and a half years part time study and final year of full time study	Master's Framework Admissions t: 0141 331 8142 e: mfadmissions@gcal.ac.uk w: www.gcal.ac.uk/shsc	Download an application form at www.gcal.ac.uk/study/part-timedegrees/howtoapply
Block day release	Fees charged per module: 15 credits £420; 30 credits £840. Dissertation (60 credits) £840. Self/Employer funded.	Two and a half years part time study and final year of full time study	Master's Framework Admissions t: 0141 331 8142 e: mfadmissions@gcal.ac.uk w: www.gcal.ac.uk/shsc	Download an application form at www.gcal.ac.uk/study/part-timedegrees/howtoapply
Block day release	Fees charged per module: 15 credits £420; 30 credits £840. Dissertation (60 credits) £840. Self/Employer funded.	Two and a half years part time study and final year of full time study	Master's Framework Admissions t: 0141 331 8142 e: mfadmissions@gcal.ac.uk w: www.gcal.ac.uk/shsc	Download an application form at www.gcal.ac.uk/study/part-timedegrees/howtoapply
Block day release	Fees charged per module: 15 credits £420; 30 credits £840. Self/Employer funded	Up to 6 years	Master's Framework Admissions t: 0141 331 8142 e: mfadmissions@gcal.ac.uk w: www.gcal.ac.uk/shsc	Download an application form at www.gcal.ac.uk/study/part-timedegrees/howtoapply
Block day release	Fees charged per module: 15 credits £420; 30 credits £840. Self/Employer funded.	Up to 6 years	Master's Framework Admissions t: 0141 331 8142 e: mfadmissions@gcal.ac.uk w: www.gcal.ac.uk/shsc	Download an application form at www.gcal.ac.uk/study/part-timedegrees/howtoapply
Block day release	Fees charged per module: 15 credits £420; 30 credits £840. Fees for modules Pharmacology for Podiatric Surgery and Anatomy & Physiology for Surgical Practice £625 each. Self/Employer funded.	Up to 6 years	Master's Framework Admissions t: 0141 331 8142 e: mfadmissions@gcal.ac.uk w: www.gcal.ac.uk/shsc	Download an application form at www.gcal.ac.uk/study/part-timedegrees/howtoapply
Block day release	Fees charged per module: 15 credits £420; 30 credits £840. Dissertation (60 credits) £840. Fees for modules Pharmacology for Podiatric Surgery and Anatomy & Physiology for Surgical Practice £625 each. Self/Employer funded.	Up to 6 years	Master's Framework Admissions t: 0141 331 8142 e: mfadmissions@gcal.ac.uk w: www.gcal.ac.uk/shsc	Download an application form at www.gcal.ac.uk/study/part-timedegrees/howtoapply

School of Health		
Award	Programme Title	Entry Requirements
PgC	Health and Social Care (Podiatric Diabetology)	HPC Registered Chiropodist/Podiatrist. Honours degree preferred but consideration is given to those holding unclassified degrees or professional diploma's provided they have at least 1 year of professional work experience. (Newly qualified practitioners with no professional work experience should have a 2:1 Honours or above).
PgC	Health and Social Care (Podiatric Neurovascular Studies)	HPC Registered Chiropodist/Podiatrist. Honours degree preferred but consideration is given to those holding unclassified degrees or professional diploma's provided they have at least 1 year of professional work experience. (Newly qualified practitioners with no professional work experience should have a 2:1 Honours or above).
PgC	Health and Social Care (Evidence Based Practice)	UK Occupational Therapy Honours degree 1st or 2nd class or equivalent. Unclassified Occupational Therapy degree or professional diploma, normally with at least two years of professional work experience.
PgC	Health and Social Care (Partnership working)	Health and social care professionals from a variety of settings and working with different client groups are eligible to participate in the programme. The programme organiser reserves the right to maintain a balance in the allocation of places on the programme between health and social care professionals.
PgC	Health and Social Care (Leadership in Practice Learning, Social Services)	The programme is open to those who hold an Honours degree. Those with unclassified degrees or professional diplomas should have at least two years professional experience prior to application.
BSc (Hons)	Advancing Practice in Primary Care	UK Registered Health Care Professional with a minimum of 3 years post qualifying experience and working within an advanced practice community / primary care setting; 120 points at SCQF level 7 & 120 points at SCQF level 8.
BSc (Hons)	Advancing Practice in Primary Care	UK Registered Health Care Professional with a minimum of 3 years post qualifying experience. Currently working within the context of advanced practice in primary care / community setting. Normally 1st degree.
BSc	Community Nursing with Specialist Practitioner Qualification	1st level registered nurse; normally 2 years post qualifying experience; 120 points at SCQF level 7 & 120 points at SCQF level 8.
BSc (Hons)	Community Nursing with Specialist Practitioner Qualification	1st level registered nurse; normally 2 years post qualifying experience. Normally 1st degree.
BSc / BSc (Hons)	Midwifery	Applicants should be qualified midwives with a minimum of three years previous study.
BSc / BSc (Hons)	Professional Development	Candidates will normally possess 240 SHE (SCQF 7, 8 & 9 point). A number of SHE level 2 / level 8 modules are offered to provide applicants with an appropriate mechanism to facilitate entry to programme.
BSc	Specialist Community Public Health Nursing	1st level registered nurse; normally 2 years post qualifying experience; 120 points at SCQF level 7 & 120 points at SCQF level 8.
BSc (Hons)	Specialist Community Public Health Nursing	1st level registered nurse; normally 2 years post qualifying experience. Normally 1st degree.
PgD	Community Nursing with Specialist Practitioner Qualification	1st level registered nurse; normally 2 years post qualifying experience. Normally Honours degree.
PgD	Specialist Community Public Health Nursing	1st level registered nurse; normally 2 years post qualifying experience. Normally Honours degree.
MSc	Advancing Practice in Primary Care	UK Registered Health Care Professional with a minimum of 3 years post qualifying experience. Currently working within the context of advanced practice in primary care / community setting. Normally Honours degree.

Mode of Study	Fees/Funding	Duration	Contact	How to apply
Block day release	Fees charged per module: 15 credits £420; 30 credits £840. Dissertation (60 credits) £840. Fees for modules Pharmacology for Podiatric Surgery and Anatomy & Physiology for Surgical Practice £625 each. Self/Employer funded.	Up to 6 years	Master's Framework Admissions t: 0141 331 8142 e: mfadmissions@gcal.ac.uk w: www.gcal.ac.uk/shsc	Download an application form at www.gcal.ac.uk/study/part-timedegrees/howtoapply
Block day release	Fees charged per module: 15 credits £420; 30 credits £840. Fees for modules Pharmacology for Podiatric Surgery and Anatomy & Physiology for Surgical Practice £625 each. Self/Employer funded.	Up to 6 years	Master's Framework Admissions t: 0141 331 8142 e: mfadmissions@gcal.ac.uk w: www.gcal.ac.uk/shsc	Download an application form at www.gcal.ac.uk/study/part-timedegrees/howtoapply
Block day release	Fees charged per module: 15 credits £420; 30 credits £840. Self/Employer funded.	Up to 6 years	Master's Framework Admissions t: 0141 331 8142 e: mfadmissions@gcal.ac.uk w: www.gcal.ac.uk/shsc	Download an application form at www.gcal.ac.uk/study/part-timedegrees/howtoapply
Block day release	Fees charged per module: 15 credits £420. Self/Employer funded.	Up to 6 years	Master's Framework Admissions t: 0141 331 8142 e: mfadmissions@gcal.ac.uk w: www.gcal.ac.uk/shsc	Download an application form at www.gcal.ac.uk/study/part-timedegrees/howtoapply
Block day release	Fees charged per module: 15 credits £420; 30 credits £840. Self/Employer funded.	Up to 6 years	Master's Framework Admissions t: 0141 331 8142 e: mfadmissions@gcal.ac.uk w: www.gcal.ac.uk/shsc	Download an application form at www.gcal.ac.uk/study/part-timedegrees/howtoapply
Day / Evening	Self or employer funded. Fees variable depending on modules selected.	2 - 5 years	Programme Leader t: 0141 331 8373 e: marion.welsh@gcal.ac.uk w: www.gcal.ac.uk/nmch	Application via Programme Administrator t: 0141 331 3950
Day / Evening	Self or employer funded. Fees variable depending on modules selected.	2 - 5 years	Programme Leader t: 0141 331 8373 e: marion.welsh@gcal.ac.uk w: www.gcal.ac.uk/nmch	Application via Programme Administrator t: 0141 331 3950
Day	£1,065 per year, £355 per module. Self or employer funded.	2 - 5 years	Programme Leader t: 0141 331 3811 e: Alan.Middleton@gcal.ac.uk w: www.gcal.ac.uk/nmch	Application via Programme Administrator t: 0141 331 3950
Day	£1,065 per year, £355 per module. Self or employer funded.	2 - 5 years	Programme Leader t: 0141 331 3811 e: Alan.Middleton@gcal.ac.uk w: www.gcal.ac.uk/nmch	Application via Programme Administrator t: 0141 331 3950
Distance	£325 per module.	2 - 3 years	Programme Administrator t: 0141 331 8646 e: midwifery@gcal.ac.uk w: www.gcal.ac.uk/nmch	Application via email e: midwifery@gcal.ac.uk
Day / Evening	£285 per module.	up to 4 years	Programme Administrator: Alex Barnard t: 0141 331 3466 e: alex.barnard@gcal.ac.uk w: www.gcal.ac.uk/nmch	Application via Programme Administrator t: 0141 331 3466
Day	£2010 (2008 / 2009 fees) Self or employer funded.	2 - 3 years	Programme Leader t: 0141 331 3454 e: Mary.Scott@gcal.ac.uk w: www.gcal.ac.uk/nmch	Application via Programme Administrator t: 0141 331 3950
Day	£2010 (2008 / 2009 fees) Self or employer funded.	2 - 3 years	Programme Leader t: 0141 331 3454 e: Mary.Scott@gcal.ac.uk w: www.gcal.ac.uk/nmch	Application via Programme Administrator t: 0141 331 3950
Day	£1,464 per year, £366 per module. Self or employer funded.	2 - 5 years	Programme Leader t: 0141 331 3811 e: Alan.Middleton@gcal.ac.uk w: www.gcal.ac.uk/nmch	Application via Programme Administrator t: 0141 331 3950
Day	£1,464 per year, £366 per module. Self or employer funded.	2 - 3 years	Programme Leader t: 0141 331 3454 e: Mary.Scott@gcal.ac.uk w: www.caledonian.ac.uk/nmch	Application via Programme Administrator t: 0141 331 3950
Day / Evening	Self or employer funded. Fees variable depending on modules selected.	2 - 5 years	Programme Leader t: 0141 331 8373 e: marion.welsh@gcal.ac.uk w: www.gcal.ac.uk/nmch	Application via Programme Administrator t: 0141 331 3950

School of Health

Award	Programme Title	Entry Requirements
MSc	Community Health	Honours degree or equivalent. Relevant professional qualification.
MSc	Healthcare Education	Honours degree or equivalent. Relevant professional qualification; 3 years post qualifying experience.
MSc	Midwifery	Applicants should be qualified midwives with an Honours degree or equivalent. Candidates with appropriate experience may be considered through the Recognition of Prior Learning (RPL).
MSc	Nursing	Equivalent with attainment of the Postgraduate Diploma in Nursing must hold a professional qualification which is of direct relevance to the development and delivery nursing services.
MSc	Nursing	Equivalent of the Postgraduate Diploma in Specialist Nursing (Specialist Practitioner Qualification in Acute Nursing Practise) must be a first level nurse on an appropriate part of the NHC register with at least two years post-registration work experience.
MSc	Public Health	Honours degree or equivalent. Relevant professional qualification and / or appropriate experience in Public Health.
MSc	Sexual Health	Anyone working in the area of sexual health with an Honours degree or equivalent. Candidates with appropriate experience may be considered through the Recognition of Prior Learning (RPL).

School of Law and Social Sciences

Award	Programme Title	Entry Requirements
BA	Social Sciences	Level One: Higher Grade BBBC or BBCC including English. A level CDD or BC. HNC Social Sciences or comparable. Level Two: Normally HND Social Sciences or HNC Social Sciences with BB graded unit. Level Three: HND Social Sciences with BB Graded unit.
LLB	Bachelor of Laws	The current going rate for the LLB is typically AABBB at Higher Grade or BBB at A Level. A Level English or a minimum B grade at Higher is essential, as is Standard Grade (level 3) or GCSE Mathematics, HND in Legal Services with AA integrative assessment or Pre entry certificate or other relevant access course.
LLB	Bachelor of Laws (Fast Track)	Normally 2:1 Honours or Pass degree with distinction or merit but all students considered on an individual basis.
Msc	Social Research / Social Research (Policy Analysis)	Normally Honours degree but all students considered on an individual basis.
Msc	Health History	Normally Honours degree but all students considered on an individual basis.
LLM	International Business Law	Applicants should hold a first degree in law, at Honours level, awarded by a university recognised by Glasgow Caledonian University or a professional qualification in law or holders of qualifications deemed to be equivalent to either a first degree in law, at Honours level, or to a professional qualification in which a study of law constituted a major part.
LLM	International Contracting	Applicants should hold a first degree in law, at Honours level, awarded by a university recognised by Glasgow Caledonian University or a professional qualification in law or holders of qualifications deemed to be equivalent to either a first degree in law, at Honours level, or to a professional qualification in which a study of law constituted a major part.
LLM	European and International Law	Applicants should hold a first degree in law, at Honours level, awarded by a university recognised by Glasgow Caledonian University or a professional qualification in law or holders of qualifications deemed to be equivalent to either a first degree in law, at Honours level, or to a professional qualification in which a study of law constituted a major part.

Mode of Study	Fees/Funding	Duration	Contact	How to apply
Online / Day	£1,464 per year, £366 per module. Self or employer funded.	2 - 5 years	Programme Leader t: 0141 331 3475 e: Karen.Room@gcal.ac.uk w: www.gcal.ac.uk/nmch	Application via Programme Administrator t: 0141 331 3950
Day	£1,240 per year, £620 per module.	2 - 5 years	Programme Leader t: 0141 331 3940 e: L.Proodfoot@gcal.ac.uk w: www.gcal.ac.uk/nmch	Application via Programme Administrator t: 0141 331 3950
Online / Distance	£350 per module.	1 year full-time, 2 - 5 years part-time	Programme Administrator t: 0141 331 8646 e: midwifery@gcal.ac.uk w: www.gcal.ac.uk/nmch	Application via email e: midwifery@gcal.ac.uk
Day	£305 per module.	Typically 3 years	Programme Administrator: Louise Spiers t: 0141 331 8646 e: louise.speirs@gcal.ac.uk w: www.gcal.ac.uk/nmch	Application via Programme Administrator t: 0141 331 8646
Day	£305 per module.	Typically 3 years	Programme Administrator: Louise Spiers t: 0141 331 8646 e: louise.speirs@gcal.ac.uk w: www.gcal.ac.uk/nmch	Application via Programme Administrator t: 0141 331 8646
Online / Day	£1,240 per year, £620 per module. Self or employer funded.	2 - 5 years	Programme Leader t: 0141 331 3475 e: Karen.Room@gcal.ac.uk w: www.gcal.ac.uk/nmch	Application via Programme Administrator t: 0141 331 3950
Online / Distance	£350 per module.	2 - 5 years	Programme Administrator t: 0141 331 8646 e: sexualhealth@gcal.ac.uk w: www.gcal.ac.uk/nmch	Application via email e: sexualhealth@gcal.ac.uk

Mode of Study	Fees/Funding	Duration	Contact	How to apply
Evenings	£860 per year. £215 per module. Self or employer funded. ILA eligible. www.ilascotland.org.uk	4 years one semester, minimum	Peter Kennedy t: 0141 331 8654 e: baseadmin@gcal.ac.uk w: www.gcal.ac.uk/lss	Download an application form at www.gcal.ac.uk/study/part-timedegrees/howtoapply
Evenings	£2,140 per year.	4 years one semester, minimum.	Moria Macmillan t: 0141 331 3433 e: elaine.hurley@gcal.ac.uk w: www.gcal.ac.uk/lss	Download an application form at www.gcal.ac.uk/study/part-timedegrees/howtoapply
Evenings	£2,140 per year.	4 years one semester, minimum.	Moria Macmillan t: 0141 331 3433 e: elaine.hurley@gcal.ac.uk w: www.gcal.ac.uk/lss	Download an application form at www.gcal.ac.uk/study/part-timedegrees/howtoapply
Twilight, 3pm-7pm	£1,440 plus £720 Dissertation fee.	Diploma: 2 years, Masters: 2 - 3 years	Dr John McKendrick t: 0141 331 8221/3415 e: j.mckendrick@gcal.ac.uk or mres@gcal.ac.uk w: www.gcal.ac.uk/lss	Download an application form at www.gcal.ac.uk/study/part-timedegrees/howtoapply
Evenings	£1,960 plus £515 Dissertation fee.	Diploma: 2 years, Masters: 2 - 3 years	Dr Janet Greenlees t: 0141 331 8209 e: janet.greenlees@gcal.ac.uk w: www.gcal.ac.uk/lss	Download an application form at www.gcal.ac.uk/study/part-timedegrees/howtoapply
Daytime	£660 per module and £800 Dissertation fee.	Diploma: 3 years, Masters: 2 - 3 years	Dr Martin Jones t: 0141 331 8021 e: m.jones@gcal.ac.uk w: www.caledonian.ac.uk/lss/study/pg/llmmain.html	Download an application form at www.gcal.ac.uk/study/part-timedegrees/howtoapply
Daytime	£660 per module and £800 Dissertation fee.	Diploma: 4 years, Masters: 2 - 3 years	Dr Martin Jones t: 0141 331 8021 e: m.jones@gcal.ac.uk w: www.caledonian.ac.uk/lss/study/pg/llmmain.html	Download an application form at www.gcal.ac.uk/study/part-timedegrees/howtoapply
Daytime	£660 per module and £800 Dissertation fee.	Diploma: 5 years, Masters: 2 - 3 years	Dr Martin Jones t: 0141 331 8021 e: m.jones@gcal.ac.uk w: www.caledonian.ac.uk/lss/study/pg/llmmain.html	Download an application form at www.gcal.ac.uk/study/part-timedegrees/howtoapply

School of Law and Social Sciences

Award	Programme Title	Entry Requirements
LLM	European and International Trade Law	Applicants should hold a first degree in law, at Honours level, awarded by a university recognised by Glasgow Caledonian University or a professional qualification in law or holders of qualifications deemed to be equivalent to either a first degree in law, at Honours level, or to a professional qualification in which a study of law constituted a major part.

School of Life Sciences

Award	Programme Title	Entry Requirements
	Biomedical Science (BIOP)	IBMS assessment of academic qualification for the award of Certificate of Competence.
BSc	Biomedical Science	Higher Grade BBC/BCCC; A level DDD; ILC BCCC; HNC/HND plus merits in a relevant discipline.
BSc	Psychology	Higher Grade BBC/BCCC; A level DDD; ILC BCCC; HNC/HND plus merits in a relevant discipline.
MSc	Biomedical Science	Candidates must hold a BSc(Hons) Biomedical Science or BSc(Hons) in a biological science subject plus additional study as determined on application to the Registration Unit of the Institute of Biomedical Science (IBMS). Candidates should also be employed as a Biomedical Scientist in a clinical laboratory.
MSc/D.Psych	Counselling Psychology	Candidates must hold a good first degree in Psychology, granting them Graduate Basis for Registration (GBR) with the British Psychology Society. They must also demonstrate experience in a caring role and personal maturity.
MSc	Forensic Psychology/Psychology (In Forensic Settings)	Candidates should hold 2.1 or above Honours Degree in psychology recognised by the BPS as providing the graduate basis for registration (GBR). It is also preferred for candidates to have gained work experience, either voluntary or paid, in the forensic field.
MSc	Psychology and Mental Health	Candidates will normally hold a first degree or equivalent.
PgD	Psychology (Conversion)	Candidates should hold an Honours degree with some Psychology content though not necessarily at Honours level.

Note:

The information contained in this prospectus is correct at the time of going to print. However, course content and fees are subject to change and candidates are advised to check the university website or contact us for further details prior to application.

Mode of Study	Fees/Funding	Duration	Contact	How to apply
Daytime	£660 per module and £800 Dissertation fee.	Diploma: 6 years, Masters: 2 - 3 years	Dr Martin Jones t: 0141 331 8021 e: m.jones@gcal.ac.uk w: www.caledonian.ac.uk/lss/study/pg/llmain.html	Download an application form at www.gcal.ac.uk/study/part-timedegrees/howtoapply

Mode of Study	Fees/Funding	Duration	Contact	How to apply
Day	Self or employer funded	Dependant on the number of modules student advised to undertake	Dr Linda Walsh t: 0141 331 3632 e: L.P.Walsh@gcal.ac.uk w: www.gcal.ac.uk/sls	Contact admissions tutor
Day	Self or employer funded. £1,260 per year, £315 per module.	Dependant on the number of modules student advised to undertake	Dr Linda Walsh t: 0141 331 3632 e: L.P.Walsh@gcal.ac.uk w: www.gcal.ac.uk/sls	Download an application form at www.gcal.ac.uk/study/part-timedegrees/howtoapply
Day and Evening	Self or employer funded. £1,400 per year, £350 per module.	4-5 years dependant upon number of modules undertaken each semester	Admissions Tutor t: 0141 331 3119 e: psychologyadmissions@gcal.ac.uk w: www.gcal.ac.uk/sls	Download an application form at www.gcal.ac.uk/study/part-timedegrees/howtoapply
Day Release	£780 per year	Up to 3 years	Dr L Jones t: 0141 331 3202 e: l.jones@gcal.ac.uk w: www.gcal.ac.uk/sls	Download an application form at www.gcal.ac.uk/study/part-timedegrees/howtoapply
Day Release	£2,650 per year	5 years	Heather McIntyre t: 0141 331 8529 e: heather.mcintyre@gcal.ac.uk w: www.gcal.ac.uk/sls	Download an application form at www.gcal.ac.uk/study/part-timedegrees/howtoapply
Day Release	£2,240 per year or £560 per module plus £780 Dissertation fee	Up to 3 years	Deborah O'Neill t: 0141 331 8611 e: Deborah.Oneill@gcal.ac.uk w: www.gcal.ac.uk/sls	Download an application form at www.gcal.ac.uk/study/part-timedegrees/howtoapply
Day Release	£211 per module	Up to 3 years	Heather McIntyre t: 0141 331 8529 e: heather.mcintyre@gcal.ac.uk w: www.gcal.ac.uk/sls	Download an application form at www.gcal.ac.uk/study/part-timedegrees/howtoapply
Day Release	£2,166 per year	Up to 3 years	Dr Anne Ross t: 0141 331 8163 e: A.G.Ross@gcal.ac.uk w: www.gcal.ac.uk/sls	Download an application form at www.gcal.ac.uk/study/part-timedegrees/howtoapply

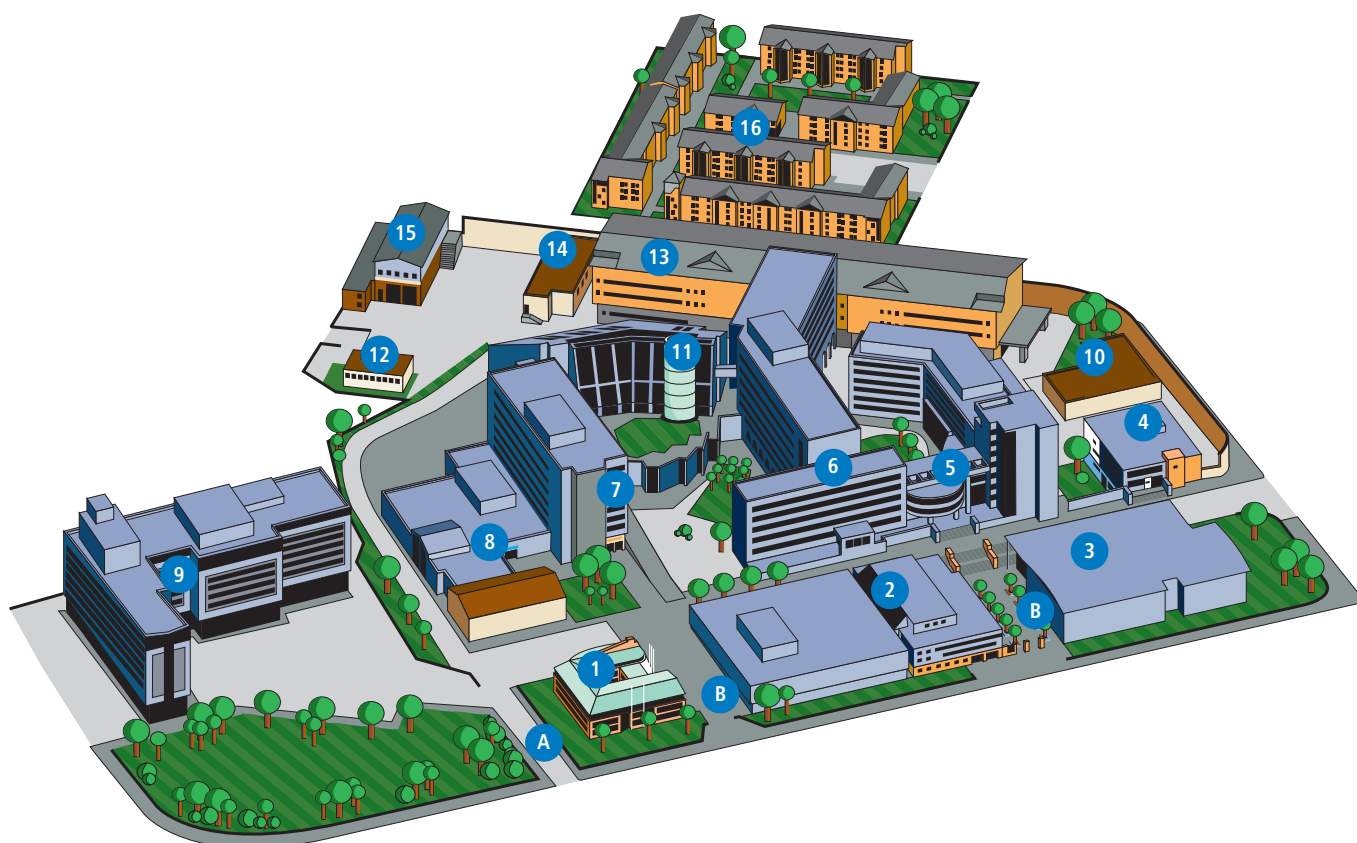
Note:

- Overseas students are not permitted on a student visa to study on a part-time basis. If you are here on another visa you may be able to study on a part-time basis.
- It should be noted that international students must meet the University English language requirements: IELTS 6.5, though particular programmes may require a higher level.
- Refer to contact listed per programme entry for details of fees applicable for overseas students.

Please contact our **International Office** on t: +44 (0) 141 333 8675 or e: international@gcal.ac.uk to find out more.



- A: Glasgow Caledonian University
- B: Glasgow Metropolitan College
- C: Central College
- D: Central Train Station
- E: Queen Street Train Station
- F: Buchanan Bus Station
- G: Charing Cross Train Station
- H: Anderston Train Station
- I: Argyle Street Train Station
- J: Cowcaddens Subway Station
- K: Buchanan Street Subway Station
- L: St Enoch Subway Station



Glasgow itself has excellent rail links with the rest of the UK, with Queen Street and Central Stations located in the city centre. Glasgow International Airport is a 15 minute drive by motorway from the city centre and there is a regular shuttle bus service between the city and the airport.

The main entrance to the university campus is on Cowcaddens Road, opposite Buchanan Bus Station. Nearby subway stations are Cowcaddens or Buchanan Street. The university campus is a short walk from the city centre and Queen Street and Central Stations.

- A: Vehicle Entrance (from Cowcaddens Road)
- B: Pedestrian Entrances (from Cowcaddens Road)
- 1: Britannia Building
- 2: Continuing Professional Development Centre, Real Learning Café, John Smith's Bookshop & William Harley Building
- 3: Arc Health & Fitness Facility
- 4: Students' Association & SRC Offices
- 5: Govan Mbeki Building
- 6: George Moore Building
- 7: Hamish Wood Building
- 8: Refectory
- 9: Buchanan House
- 10: Occupational Health Unit
- 11: The Saltire Centre
- 12: Nursery
- 13: Charles Oakley Laboratories
- 14: Teaching Block
- 15: Milton Street Building
- 16: Caledonian Court



GLASGOW CALEDONIAN UNIVERSITY,
COWCADDENS ROAD,
GLASGOW, G4 0BA,
SCOTLAND, UK

t: **+44 (0) 141 331 3000**
w: **www.gcal.ac.uk**

GLASGOW CALEDONIAN UNIVERSITY IS A REGISTERED SCOTTISH CHARITY, NUMBER SC021474

Education 
SCOTLAND
Innovative. Individual. Inspirational.

2008
THE AWARDS
OUTSTANDING SUPPORT FOR
OVERSEAS STUDENTS