



## University/Student Terms & Conditions

The university will use all reasonable endeavours to deliver courses and programmes of study in accordance with the descriptions set out in this prospectus. The prospectus is inevitably produced at the earliest date to provide maximum assistance to intending applicants and it is possible that some changes will occur between the date of printing and the start of the academic year to which it relates (including academic exchange programmes). The university therefore reserves the right to make variations to the content or method of delivery of courses, to discontinue, merge or combine courses if such action is reasonably considered to be necessary by the university. Such changes may occur either before or after admission. If the university discontinues any course, it will use its reasonable endeavours to provide a suitable alternative course.

The university will, in the event of industrial action or circumstances beyond its control, interfering with its ability to provide courses or services, undertake to minimise the disruption as far as practical.

The university aims to offer undergraduate students flexibility of study within the relevant regulations and the academic timetable is drawn up with this objective in mind. However, while every student will be able to take appropriate modules in the programme for which he/she is registered, no timetable can guarantee that all modules will be available to all students who are qualified to take them. Options offered may be subject to a minimum level of interest being shown in any given year.

## The Student Charter

The Further and Higher Education Charter for Scotland sets out the standards that students, employers and the public can expect from colleges and universities throughout Scotland. Glasgow Caledonian University is committed to the adoption and implementation of the aims and objectives contained within the Charter. Glasgow Caledonian University welcomes students of all kinds and adopts a positive approach to equal opportunities. We listen to students' opinions on programmes and facilities and provide the opportunity to make comment. The Charter is available by writing for a copy to Freepost GW7383 Glasgow G13 1BR.



This booklet is designed to accompany the university's Undergraduate Prospectus for 2010 entry which contains full details for most programmes







# Welcome

Welcome to Glasgow Caledonian University's supplement to our Undergraduate Prospectus, specifically designed for applicants currently studying at college. We have a large number of applicants studying for Higher National Certificates and Higher National Diplomas, who are looking for advice and guidance on their next step. This booklet outlines the opportunities available at Glasgow Caledonian for advanced entry to established undergraduate programmes. We also have a number of programmes specifically designed to link with HNDs.



The Saltire Centre

## **Undergraduate Prospectus**

This booklet is designed to accompany the university's Undergraduate Prospectus for 2010 entry. The main prospectus contains full details for each programme, its structure, career pathways and placements. It also has information about Glasgow, university life, support services, our Widening Access initiatives and many other relevant details. If you do not have a copy of our Undergraduate Prospectus, please call **0141 331 8681** or visit **[www.gcal.ac.uk](http://www.gcal.ac.uk)**

## **Entry qualifications**

The entry qualifications listed are intended to give an indication of the academic requirements for advanced entry. However, each application is considered on an individual basis.

## **Modular systems**

One of the most difficult adjustments for a college student coming to university is the move to a modular system and final exams. You will study six modules in an academic year, three per semester, and each will usually have some form of final examination, which is normally unseen. Please seek advice from academic and support staff at the university if you have concerns over the transition to this new way of studying.

## **International students**

Many overseas students come to Glasgow Caledonian having first studied at a further education college in the UK. We offer our international students help with accommodation in Caledonian Court or advice on private housing in Glasgow. Our International Students' Adviser supports and gives practical advice to our overseas guests and the International Students' Society organises a wide range of activities for international students.

## **Students with children**

All full-time Glasgow Caledonian students with children can apply for financial help towards childcare costs for pre-school children, regardless of whether or not there is a place available within our nursery on campus. Help and advice is available from both the Saltire Centre and the nursery itself.

# Induction Programme



The university has designed an induction programme to assist you in the transition from further to higher education. Participation in this programme will help you to become a competent and confident learner, ready to take full advantage of the programmes provided by Caledonian University.



The programme is offered jointly by academic schools and support services and aims to introduce you to the experience of being a student in higher education.

Students are given the opportunity to develop library, study and information technology skills as well as access to the services which underpin well-being such as counselling, recreation and advice on finance and accommodation.

The induction programme is usually offered in your first week at university and has three major strands. The first two are common to all new students, while the third is specifically designed for direct entrants from further education colleges.

Firstly, there is a general introduction to support services such as counselling and advice, well-being and recreation, as well as an overview of the Saltire Centre and an introduction from the Students' Association. Secondly, there is a hands-on session which provides information on how to access the university's IT facilities. Information on how to find out more about IT systems and how to seek help in the event of problems is also given at this time.

Thirdly, designed to build on skills gained in Further Education, there is an exploration of learning strategies. During your first week you will take part in a series of morning or afternoon sessions: being a university student, note-taking, library research, essay preparation and aspects of

academic writing. These sessions are designed to help you acquire those skills identified by your lecturer as being key to successful coursework. To increase relevance to your academic work, the examples used in each part of the programme are tailored to the needs of your own subject group.

In addition to these scheduled events, throughout the year you are encouraged to make use of the specific support provided by the Effective Learning Service.

You can also get assistance from IT Support and there are various other helpdesks which will provide general information and signposting to all the services on offer. All of these helpdesks and services can be found at the enquiry desk on the ground floor of the Saltire Centre.

## Contact

Support Services  
E: [h.martin@gcal.ac.uk](mailto:h.martin@gcal.ac.uk)  
T: +44 (0)141 273 1273

Helpline  
T: +44 (0)141 331 8681

“ The induction programme is offered jointly by academic schools and support services and aims to introduce you to the experience of being a student in higher education. ”

If you're new to university, getting used to your studies and to university life can take a bit of adjustment. During your degree, your timetable will be made up of a combination of lectures, seminars, labs and practical work, not to mention time for independent study. This page provides a rough guide to what to expect when starting your degree programme.



## Hours in a normal week

Hours of work vary from programme to programme, however you will be surprised how flexible your timetable can be. There will be days where your timetable is completely full, as well as days when you have very few or no classes at all.

As university is much more focussed on independent study, you should aim to spend much of the time when you're not in classes studying.



## An academic year

One of the biggest changes will be the way your studies are structured throughout the year. Both the pace and the intensity of your learning will surprise you. Remember, though, that a great deal of encouragement, support and guidance is available to you throughout your studies.

## Semesters

The semester system splits the academic year into two parts. Both Semester A and Semester B each last approximately 15 weeks. Twelve of those are spent being taught in lectures, labs, seminars etc and the final three weeks will be used for exams. Semester A begins in September and Semester B early in the new year.

## Seminars

A seminar (sometimes called a tutorial) is designed to expand on the topic that is introduced in the lecture. Styles of seminar can, again, vary dependent upon the subject covered. However, there are always a relatively small number of students (approximately 12) and you are free to raise questions and discuss issues covered by the lecture. In some cases, you may be asked to prepare a paper that will be used to start the discussion.

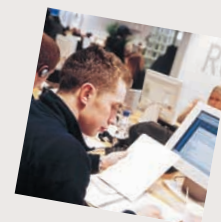
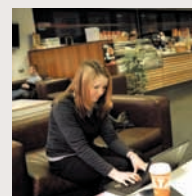


## Lectures

Styles of lecture vary, however they are designed to be an initial step to introducing different topics to you. Whilst it is not impossible to ask questions, with up to 200 people in the room, you are usually expected just to listen and take notes whilst the lecturer speaks. Lectures usually last an hour.

## Labs

In subjects such as engineering, science and computing, you will receive tuition in laboratories using either IT or other equipment necessary to learn the subject. This will, almost always, be done in a small group, using high technology equipment under the supervision of trained staff.



## Modules

Within each semester you will usually complete three modules. Each module will cover a specific topic, most of which are compulsory parts of your programme. However, as you get beyond Years 1 and 2 of your programme, you will be given more options to choose from in terms of the modules you can study.

## Assessment

Your learning is assessed using a combination of coursework and examinations. During each semester, your performance in your coursework will allow you to demonstrate your grasp of the subject outwith exam conditions.

Coursework can take the form of essays, written assignments or practical work in labs. These will then count towards your final overall score in a subject (e.g. coursework might be worth 30% and examination worth 70% of the final grade).

Unseen examinations may be very familiar to you, especially if you have just left school. However, using past papers as a guide to your strengths and weaknesses is helpful and good exam techniques are a vital ingredient to success in your studies.



The courses I have taken encourage you to find your own way of studying and use it to your advantage.

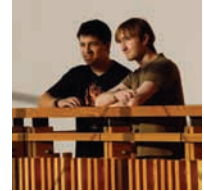
Nia, 2nd year student



## Part-time study



Part-time study is a major element of the university's provision. It runs over 50 part-time programmes with over 3,000 students.



Whether you are looking for a complete evening undergraduate programme, or to choose a few modules on a day-release basis, Glasgow Caledonian University has the study options and support framework that will help you get the most out of your studies.

Part-time learning has traditionally been on a day-release basis, however the university has expanded its provision to offer programmes in the evening, via distance and work-based learning and even bespoke modules taught to groups within one company.

Glasgow Caledonian is recognised as a leading UK light in the area of Work-Based Learning, offering access to both undergraduate and postgraduate work-based learning contract frameworks, for students across the world. Our developing campus, with its innovative Saltire Centre, is also designed to be accessible to part-time students who need our services seven days a week. For more information on our part time programmes, visit [www.gcal.ac.uk](http://www.gcal.ac.uk) or contact us for a prospectus.

PROGRAMMES AVAILABLE ON A PART-TIME BASIS		MODE OF STUDY
BSc/BSc(Hons)	Biomedical Science	Day Release
BSc/BEng	Building Services Engineering	Day Release/Evening
BSc(Hons)	Building Surveying	Day Release/Evening
BA	Business and Management	Evening
BSc(Hons)	Construction Management	Day Release/Evening
BEng/BEng(Hons)	Electrical Power Engineering	Day Release
BSc(Hons)	Environmental Civil Engineering	Day Release
BSc(Hons)	Fire Risk Engineering	Day Release/Evening
LLB/LLB(Hons)	Bachelor of Laws	Evening (4.5 years)
BEng/BEng(Hons)	Manufacturing Systems Engineering	Day Release
BEng/BEng(Hons)	Mechanical Electronic Systems Engineering	Day Release
BA	Occupational Health and Safety Management	Day Release
BSc(Hons)	Property Management and Valuation	Day Release/Evening
BSc/BSc(Hons)	Psychology	By arrangement
BSc(Hons)	Quantity Surveying	Day Release/Evening
BA/BA(Hons)	Social Sciences	Evening/Day possible
BA(Hons)	Social Work	Day Release
BA	The BA via Work-Based Learning	Evening and Weekend
Nursing, Midwifery & Community Health	A number of post-registration undergraduate programmes are available to study on a part time basis. Please contact the school for further details.	Various



“ Download a copy of our part-time prospectus at [www.gcal.ac.uk](http://www.gcal.ac.uk) ”



## School of the Built and Natural Environment

This school is the largest of its type in Scotland, and one of the leading schools for programmes in building and surveying in the UK. Our programmes are not only modern and innovative, but are also accredited by the relevant professional bodies.



## Caledonian Business School

With over 4000 students studying at undergraduate, postgraduate and professional levels, we are one of the largest business schools in Scotland.



## School of Engineering and Computing

The school has excellent links with professional bodies and develops its programmes in line with their accreditation standards, including the British Computer Society (BSC), the Institute of Engineering and Technology (IET) and the Institution of Mechanical Engineers (IMechE).



## School of Health and Social Care

The school enjoys excellent facilities, housed within a state-of-the-art building with access to the latest equipment and research facilities, together with high quality practice education placement opportunities.



## School of Law and Social Sciences

The school has links throughout the world and opportunities exist for students to study abroad. With a distinguished record as a provider of quality legal education, our LLB is accredited by the Law Society of Scotland and our Criminology degree allows students to explore attempts in late-modern societies to control and explain crime and criminal justice.



## School of Life Sciences

The school is a major provider of Biomedical Science and Dietetics, both recognised by the Health Professions Council (HPC) for state registration. Our Psychology degree is recognised by the British Psychological Society (BPS) and we teach Scotland's only Optometry programme, a degree recognised by the General Optics Council (GOC) for state registration.



## School of Nursing, Midwifery and Community Health

The school is a leading provider of Nursing and Midwifery education in Scotland. We provide quality education in a modern, well-equipped and state-of-the-art building incorporating a clinical simulation laboratory and quality clinical placement experience in the health service and independent sector alike.



**Note:** In August 09, the School of Health and Social Care and the School of Nursing, Midwifery and Community Health merged to form the School of Health.



There are plenty of help and support services that can assist with every aspect of university life, from academic issues to exam stress, from childcare to money worries... the list is endless.

Robert, 4th year student



## Quick Reference Guide



### School of the Built and Natural Environment

award & programme title	UCAS code	page
BSc <b>Building Services Engineering</b>	K231	12
<b>Relevant HN Award for Entry:</b> Building Services Engineering, Facilities Management or Mechanical Engineering. <b>Direct Entry Year 2/3:</b> Applicants with HNC/HND qualifications will be considered for advanced entry based on the content of their programme of study, evidence of achievement and, where appropriate, work experience. Visit our website <a href="http://www.gcal.ac.uk/bne/study">www.gcal.ac.uk/bne/study</a> for details. <b>Direct Entry Contact:</b> Programme Administrator T: 0141 331 3170 E: schoolbne@gcal.ac.uk		
BSc(Hons) <b>Building Surveying</b>	K230	13
<b>Relevant HN Award for Entry:</b> Built Environment, Conservation. <b>Direct Entry Year 2/3:</b> Applicants with HNC/HND qualifications will be considered for advanced entry based on the content of their programme of study, evidence of achievement and, where appropriate, work experience. Visit our website <a href="http://www.gcal.ac.uk/bne/study">www.gcal.ac.uk/bne/study</a> for details. <b>Direct Entry Contact:</b> Programme Administrator T: 0141 331 3170 E: schoolbne@gcal.ac.uk		
BSc(Hons) <b>Construction Management</b>	K251	14
<b>Relevant HN Award for Entry:</b> Built Environment, Building Inspection & Supervision or Construction Management. <b>Direct Entry Year 2/3:</b> Applicants with HNC/HND qualifications will be considered for advanced entry based on the content of their programme of study, evidence of achievement and, where appropriate, work experience. Visit our website <a href="http://www.gcal.ac.uk/bne/study">www.gcal.ac.uk/bne/study</a> for details. <b>Direct Entry Contact:</b> Programme Administrator T: 0141 331 3170 E: schoolbne@gcal.ac.uk		
BSc(Hons) <b>Environmental Civil Engineering</b>	H220	15
<b>Relevant HN Award for Entry:</b> Civil Engineering. <b>Direct Entry Year 2/3:</b> Applicants with HNC/HND qualifications will be considered for advanced entry based on the content of their programme of study, evidence of achievement and, where appropriate, work experience. Visit our website <a href="http://www.gcal.ac.uk/bne/study">www.gcal.ac.uk/bne/study</a> for details. <b>Direct Entry Contact:</b> Programme Administrator T: 0141 331 3170 E: schoolbne@gcal.ac.uk		
BSc(Hons) <b>Environmental Management and Planning</b>	FN82	16
<b>Relevant HN Award for Entry:</b> HNC/HND in Built or Natural Environment subject. <b>Direct Entry Year 2:</b> Applicants with HNC/HND qualifications will be considered for advanced entry based on the content of their programme of study, evidence of achievement and, where appropriate, work experience. Visit our website <a href="http://www.gcal.ac.uk/bne/study">www.gcal.ac.uk/bne/study</a> for details. <b>Direct Entry Contact:</b> Programme Administrator T: 0141 331 3170 E: schoolbne@gcal.ac.uk		
BSc(Hons) <b>Fire Risk Engineering</b>	H121	17
<b>Relevant HN Award for Entry:</b> Built Environment. <b>Direct Entry Year 2/3:</b> Applicants with HNC/HND qualifications will be considered for advanced entry based on the content of their programme of study, evidence of achievement and, where appropriate, work experience. Visit our website <a href="http://www.gcal.ac.uk/bne/study">www.gcal.ac.uk/bne/study</a> for details. <b>Direct Entry Contact:</b> Programme Administrator T: 0141 331 3170 E: schoolbne@gcal.ac.uk		
BSc(Hons) <b>Interior Design</b>	W250	18
<b>Relevant HN Award for Entry:</b> Interior Design. <b>Direct Entry Year 2/3:</b> Applicants with HNC/HND qualifications will be considered for advanced entry based on the content of their programme of study, evidence of achievement and, where appropriate, work experience. Visit our website <a href="http://www.gcal.ac.uk/bne/study">www.gcal.ac.uk/bne/study</a> for details. <b>Direct Entry Contact:</b> Programme Administrator T: 0141 331 3170 E: schoolbne@gcal.ac.uk		
BSc(Hons) <b>Property Management and Valuation</b>	N232	19
<b>Relevant HN Award for Entry:</b> Built Environment. <b>Direct Entry Year 2:</b> Applicants with HNC/HND qualifications will be considered for advanced entry based on the content of their programme of study, evidence of achievement and, where appropriate, work experience. Visit our website <a href="http://www.gcal.ac.uk/bne/study">www.gcal.ac.uk/bne/study</a> for details. <b>Direct Entry Contact:</b> Programme Administrator T: 0141 331 3170 E: schoolbne@gcal.ac.uk		
BSc(Hons) <b>Quantity Surveying</b>	K240	20
<b>Relevant HN Award for Entry:</b> Quantity Surveying, Built Environment. <b>Direct Entry Year 2/3:</b> Applicants with HNC/HND qualifications will be considered for advanced entry based on the content of their programme of study, evidence of achievement and, where appropriate, work experience. Visit our website <a href="http://www.gcal.ac.uk/bne/study">www.gcal.ac.uk/bne/study</a> for details. <b>Direct Entry Contact:</b> Programme Administrator T: 0141 331 3170 E: schoolbne@gcal.ac.uk		



I had missed the closing date for applications for that year and was therefore advised to apply to an FE College to study a related HND which, after one year, allowed me direct entry to year two of Glasgow Caledonian's BSc (Hons) Quantity Surveying.

Elaine Brennan, Graduate, BSc (Hons) Quantity Surveying

## Caledonian Business School



award & programme title	UCAS code	page
BA/BA(Hons) <b>Accountancy</b>	N400	24
<b>Relevant HN Award for Entry:</b> Accountancy (Mature Students Entry). <b>Direct Entry Year 2:</b> HND in Accounting with AAA in Integrative Assessments.		
<b>Direct Entry Year 3:</b> Not practicable. <b>Direct Entry Contact:</b> Admissions Team T: 0141 331 8748 E: BAAC@gcal.ac.uk		
BA/BA(Hons) <b>Business and Management</b>	NN12	25
<b>Relevant HN Award for Entry:</b> A relevant Business discipline including credits from core subjects: Economics, Financial Management, IT, Law & Management.		
<b>Direct Entry Year 2:</b> Not applicable. <b>Direct Entry Year 3:</b> No number of merits specified but will be considered in overall assessment of application. Applicants should note that limited places are available at this level. <b>Additional Information:</b> Applicants must have at least 2 credits in IT at HND level or its equivalent.		
<b>Direct Entry Contact:</b> John Cooper T: 0141 331 3311 E: babm@gcal.ac.uk		
BA/BA(Hons) <b>Business Studies</b>	N100	26
<b>Relevant HN Award for Entry:</b> Direct Entry not applicable for this programme. <b>Additional Info:</b> Students seeking entry based on HND are advised to consider either BA Business & Management or BA International Business. <b>Direct Entry Contact:</b> John Cooper T: 0141 331 3311 E: babs@gcal.ac.uk		
BA/BA(Hons) <b>Entertainment and Events Management</b>	NN82	27
<b>Relevant HN Award for Entry:</b> HN Events Management, Events & Promotion Management. <b>Direct Entry Year 2:</b> HNC/D Events Management, Events & Promotion Management, Music Management and other related qualifications. <b>Direct Entry Year 3:</b> HND Events Management, Events & Promotion Management.		
300 hours relevant work experience also required for third year entry. <b>Additional Information:</b> All HN qualifications should include relevant Business related subjects. Candidates are interviewed and will write a short essay. <b>Direct Entry Contact:</b> Matt Frew T: 0141 331 8468 E: baeventsmgt@gcal.ac.uk		
BA/BA(Hons) <b>Fashion Business</b>	JN41	28
<b>Relevant HN Award for Entry:</b> Any related to Fashion, e.g. Clothing Technology & Manufacture, Fashion Design, Production & Retail Studies. <b>Direct Entry Year 2:</b> Applicants with appropriate HNC including a minimum of 4 merits, plus higher English, will be considered. <b>Direct Entry Year 3:</b> Applicants with appropriate HND including a minimum of 4 merits, plus higher English, will be considered. <b>Additional Information:</b> Along with their qualifications, applicants will be asked to attend an interview where they will bring their portfolio. <b>Direct Entry Contact:</b> Diane Cook T: 0141 331 8754 E: bafashionbus@gcal.ac.uk		
BA/BA(Hons) <b>Fashion Marketing</b>	NW52	29
<b>Relevant HN Award for Entry:</b> HND in Retailing, Marketing or Business. <b>Additional Info:</b> Applicants with appropriate HND with pass in Graded Unit B, must include subjects in Finance, Marketing and Economics. Places are extremely limited for direct entry. <b>Direct Entry Year 3:</b> Not applicable.		
<b>Direct Entry Contact:</b> Carol Barry T: 0141 331 8755 E: bafashmkt@gcal.ac.uk		
BA/BA(Hons) <b>Finance, Investment and Risk</b>	N390	30
<b>Relevant HN Award for Entry:</b> HN in a Business related subject or Financial Services. <b>Direct Entry Year 2:</b> HND in a business related subject or HNC in Financial Services. <b>Direct Entry Year 3:</b> HND in Financial Services. <b>Direct Entry Contact:</b> Shahid Nawaz T: 0141 331 3145 E: bafinrisk@gcal.ac.uk		
BA/BA(Hons) <b>International Business</b>	N120	31
<b>Relevant HN Award for Entry:</b> HND in International Business or equivalent. <b>Direct Entry Year 2:</b> Not applicable. <b>Direct Entry Year 3:</b> No number of merits specified but will be considered in overall assessment of application. Applicants should note that limited places available at this level.		
<b>Direct Entry Contact:</b> John Cooper T: 0141 331 3311 E: baib@gcal.ac.uk		
BA/BA(Hons) <b>International Travel and Tourism Business</b>	N840	32
<b>Relevant HN Award for Entry:</b> Tourism or Travel & Tourism Management. <b>Direct Entry Year 2:</b> HNC or equivalent. Places are limited. <b>Direct Entry Year 3:</b> HND in Tourism or Travel & Tourism Management. Please visit our website for further information: <a href="http://www.gcal.ac.uk/cbs">www.gcal.ac.uk/cbs</a> . <b>Direct Entry Contact:</b> Jackie Bryden T: 0141 331 3429 E: batourmgt@gcal.ac.uk		

“ The modernity, the reputation and the vast array of facilities were all contributing factors but it was the welcoming students who gave me a tour of the campus that swayed my vote. ”

Robert Bell, Student, BA (Hons) International Travel and Tourism Business



## Quick Reference Guide



### Caledonian Business School

award & programme title	UCAS code	page
BA/BA(Hons) <b>Journalism</b>	P500	33
<b>Relevant HN Award for Entry:</b> Communication or Journalism. <b>Direct Entry Year 2:</b> An HND in Journalism with at least 6 merits in Journalism units (or A/B in integrated assessment) and a certified achievement of at least 80wpm in teeline shorthand are required for direct entry into Year 2. <b>Direct Entry Year 3:</b> An HND in Journalism, plus passes in NCTJ prelim exams in Shorthand, Public Affairs and Handout or Newswriting are the minimum requirements for direct entry in Year 3. <b>Direct Entry Contact:</b> Julian Calvert T: 0141 331 3844 E: bajo@gcal.ac.uk		
BA/BA(Hons) <b>Management, Technology and Enterprise</b>	JN92	34
<b>Relevant HN Award for Entry:</b> A relevant business discipline or IT related HND. <b>Direct Entry Year 2:</b> Not applicable. <b>Direct Entry Year 3:</b> Please contact the admissions tutor below. <b>Additional Information:</b> For further details relating to this direct entry programme, please visit <a href="http://www.gcal.ac.uk/cbs">www.gcal.ac.uk/cbs</a>		
<b>Direct Entry Contact:</b> Alexis Barlow T: 0141 331 8816 E: bamte@gcal.ac.uk		
BA/BA(Hons) <b>Marketing</b>	N500	35
<b>Relevant HN Award for Entry:</b> Marketing or any Business & Management related HN with a suitable Marketing component. <b>Direct Entry Year 2:</b> Applicants with appropriate HND with pass in Graded Unit B. <b>Direct Entry Year 3:</b> Applicants with appropriate HND with pass in Graded Unit A.		
<b>Direct Entry Contact:</b> Margie Shields T: 0141 331 8269 E: bamarket@gcal.ac.uk		
BA/BA(Hons) <b>Media and Communication</b>	PP93	36
<b>Relevant HN Award for Entry:</b> Communications, Media Studies, Advertising and Public Relations. <b>Direct Entry Year 2:</b> HND with 6 merits or B average in Integrative Assessments. <b>Direct Entry Year 3:</b> Limited places available. <b>Direct Entry Contact:</b> Catriona Miller T: 0141 331 8097 E: bamedia@gcal.ac.uk		
BA/BA(Hons) <b>Retailing</b>	N553	38
<b>Relevant HN Award for Entry:</b> HND Retail Management or equivalent. <b>Direct Entry Year 2:</b> Not applicable. <b>Direct Entry Year 3:</b> HND with pass in Graded Unit 2 at B or above. <b>Direct Entry Contact:</b> Mandy Sheridan T: 0141 331 8231 E: baretail@gcal.ac.uk		
BA/BA(Hons) <b>Risk Management</b>	N291	39
<b>Relevant HN Award for Entry:</b> HN in a Business related subject. <b>Direct Entry Year 2:</b> HND in a Business related subject. <b>Direct Entry Year 3:</b> Not practicable		
<b>Direct Entry Contact:</b> John Hood T: 0141 331 3154 E: barisk@gcal.ac.uk		
BA/BA(Hons) <b>Sports and Active Lifestyle Promotion</b>	CN65	40
<b>Relevant HN Award for Entry:</b> Sports or health-related HNs. <b>Direct Entry Year 2:</b> HNC/D in related subject. <b>Direct Entry Year 3:</b> HND Sports Management or related awards. 300 hours relevant work experience also required for third year entry. Please visit our website for further information: <a href="http://www.gcal.ac.uk/cbs">www.gcal.ac.uk/cbs</a> .		
<b>Additional Information:</b> All HN qualifications should include relevant business related subjects. Candidates are interviewed and will write a short essay.		
<b>Direct Entry Contact:</b> Matt Frew T: 0141 331 8468 E: basalp@gcal.ac.uk		



I chose Caledonian's Journalism course as it's the only one of its kind in Scotland to have NCTJ (National Council for the Training of Journalists) accreditation. The university also seemed to have great links with employers.

Ruairidh Pritchard, Student, BA (Hons) Journalism

## School of Engineering and Computing



award & programme title	UCAS code	page
BA/BA(Hons) <b>3D Computer Animation</b>	G610	44
<b>Relevant HN Award for Entry:</b> 3D Computer Animation, Graphic Design, Visual Communication, Art & Design. <b>Direct Entry Year 2:</b> An HNC in an appropriate discipline. <b>Direct Entry Year 3:</b> An HND or equivalent in an appropriate discipline. <b>Additional Information:</b> Portfolio is required, candidates will be interviewed.		
<b>Direct Entry Contact:</b> School Admissions Office T: 0141 331 3277 E: SECCourses@gcal.ac.uk		
BSc/BSc(Hons) <b>Audio Technology with Electronics</b>	J931	45
<b>Relevant HN Award for Entry:</b> HND Sound Production, HND Audio Technology or equivalent. <b>Direct Entry Year 2:</b> Applicants who have completed a good Higher National Certificate or Higher Certificate in an engineering/audio technology subject will be considered for direct entry to the second year of the programme. <b>Direct Entry Year 3:</b> HND with units in Maths and Electronics. <b>Direct Entry Contact:</b> School Admissions Office T: 0141 331 3277		
E: SECCourses@gcal.ac.uk		
BSc/BSc(Hons) <b>Audio Technology with Multimedia</b>	J932	46
<b>Relevant HN Award for Entry:</b> HND Sound Production, HND Music & Audio Technology, HND Sound Engineering or equivalent. <b>Direct Entry Year 2:</b> Year 2 of this degree is taught at FE College. <b>Direct Entry Year 3:</b> HND in an appropriate subject. <b>Direct Entry Contact:</b> School Admissions Office T: 0141 331 3277		
E: SECCourses@gcal.ac.uk		
BSc/BSc(Hons) <b>Computer Aided Mechanical Engineering</b>	H131	47
<b>Relevant HN Award for Entry:</b> Appropriate Engineering subject. <b>Direct Entry Year 2:</b> HNC. Integrative Assessment B. <b>Direct Entry Year 3:</b> HND. Integrative Assessment B. <b>Additional Information:</b> A good knowledge of Mathematics is required. <b>Direct Entry Contact:</b> School Admissions Office T: 0141 331 3277		
E: SECCourses@gcal.ac.uk		
BSc/BSc(Hons) <b>Computer Engineering</b>	H600	48
<b>Relevant HN Award for Entry:</b> Electronic Engineering/Computing Support. <b>Direct Entry Year 2:</b> HNC in Computer Engineering or equivalent. Integrative Assessment B. <b>Direct Entry Year 3:</b> HND in Computer Engineering or equivalent. Integrative Assessment B. <b>Additional Information:</b> The degree combines computing & electronic engineering principles to achieve a range of skills. Prior knowledge must be matched for advanced entry.		
<b>Direct Entry Contact:</b> School Admissions Office T: 0141 331 3277 E: SECCourses@gcal.ac.uk		
BSc/BSc(Hons) <b>Computer Games (Art and Animation)</b>	GW4G	49
<b>Relevant HN Award for Entry:</b> Interactive Media or related Software Technology subject. <b>Direct Entry Year 2:</b> An HNC in an appropriate discipline.		
<b>Direct Entry Year 3:</b> An HND or equivalent in an appropriate discipline. <b>Additional Information:</b> Portfolio is required, candidates will be interviewed.		
<b>Direct Entry Contact:</b> School Admissions Office T: 0141 331 3277 E: SECCourses@gcal.ac.uk		
BSc/BSc(Hons) <b>Computer Games (Design)</b>	GWK2	50
<b>Relevant HN Award for Entry:</b> Computer Games Development, Computing/IT. <b>Direct Entry Year 2:</b> HNC Computer Games Development (must have a total of 15 credits) HND Information & Communication Technology/Information Technology/Interactive Multimedia/Multimedia Computing: Web Development/Software Engineering. <b>Direct Entry Year 3:</b> Contact Admissions Tutor for further information. <b>Additional Information:</b> Programme has an optional one year placement.		
<b>Direct Entry Contact:</b> School Admissions Office T: 0141 331 3277 E: SECCourses@gcal.ac.uk		
BSc/BSc(Hons) <b>Computer Games (Software Development)</b>	W280	51
<b>Relevant HN Award for Entry:</b> Computing/IT. <b>Direct Entry Year 2:</b> HNC Computer Games Development (Must have a total of 15 credits). HND in Computing/IT - must include Mathematics: Calculus and Matrices for Computing (DP8F 34). <b>Direct Entry Year 3:</b> Contact Admissions Tutor for further information. <b>Additional Information:</b> Programme has an optional one year placement. <b>Direct Entry Contact:</b> School Admissions Office T: 0141 331 3277 E: SECCourses@gcal.ac.uk		



“The course was a natural progression from the HND in Computing Technical Support which I attained at college.”

Scott Near, Student, BSc (Hons) Networking and Systems Support

# Quick Reference Guide



## School of Engineering and Computing

award & programme title	UCAS code	page
BSc/BSc(Hons) <b>Computing (Information Systems Development)</b>	G500	52
<b>Relevant HN Award for Entry:</b> Computing. <b>Direct Entry Year 2:</b> HNC Computing/Information Technology/Information Systems/ Internet and Multimedia Design and Development/Multimedia Computing: Web Development/Software Engineering – must have a total of 15 credits. <b>Direct Entry Year 3:</b> HND Computing - Software Development/Information Systems/Software Engineering. <b>Additional Information:</b> Programme has an optional one year placement.		
<b>Direct Entry Contact:</b> School Admissions Office T: 0141 331 3277 E: SECCourses@gcal.ac.uk		
BSc/BSc(Hons) <b>Computing (Web Systems development)</b>	G400	53
<b>Relevant HN Award for Entry:</b> Computing. <b>Direct Entry Year 2:</b> HNC Computing/Information Technology/Internet and Multimedia Design and Development/Multimedia Computing: Web Development/Software Engineering – must have a total of 15 credits. <b>Direct Entry Year 3:</b> HND Computing - Software Development/Multimedia Computing: Web Development/Software Engineering. <b>Additional Information:</b> Programme has an optional one year placement.		
<b>Direct Entry Contact:</b> School Admissions Office T: 0141 331 3277 E: SECCourses@gcal.ac.uk		
BSc/BSc(Hons) <b>Digital Forensics and e-Discovery (subject to validation)</b>	G550	54
<b>Relevant HN Award for Entry:</b> Contact the school for details. <b>Direct Entry Year 2:</b> An HNC in an appropriate discipline. <b>Direct Entry Year 3:</b> An HND or equivalent in an appropriate discipline. <b>Additional Information:</b> All candidates will be interviewed. <b>Direct Entry Contact:</b> School Admissions Office T: 0141 331 3277 E: SECCourses@gcal.ac.uk		
BSc/BSc(Hons) <b>Digital Security and Ethical Hacking (subject to validation)</b>	G551	55
<b>Relevant HN Award for Entry:</b> Contact the school for details. <b>Direct Entry Year 2:</b> An HNC in an appropriate discipline. <b>Direct Entry Year 3:</b> An HND or equivalent in an appropriate discipline. <b>Additional Information:</b> All candidates will be interviewed. <b>Direct Entry Contact:</b> School Admissions Office T: 0141 331 3277 E: SECCourses@gcal.ac.uk		
BEng/BEng(Hons) <b>Electrical Power Engineering</b>	H630	56
<b>Relevant HN Award for Entry:</b> Relevant Engineering subject. <b>Direct Entry Year 2:</b> HND or an HNC with Integrative Assessment B. <b>Direct Entry Year 3:</b> HND with Integrative Assessment B. <b>Direct Entry Contact:</b> School Admissions Office T: 0141 331 3277 E: SECCourses@gcal.ac.uk		
BEng(Hons) <b>Electronic Product Engineering</b>	H690	57
<b>Relevant HN Award for Entry:</b> Relevant Engineering subject. <b>Direct Entry Year 2/3:</b> Contact the school for details. <b>Direct Entry Contact:</b> School Admissions Office T: 0141 331 3277 E: SECCourses@gcal.ac.uk		
BA/BA(Hons) <b>Graphic Design for Digital Media</b>	W290	58
<b>Relevant HN Award for Entry:</b> Graphic Design, Visual Communication, Computer Art & Design. <b>Direct Entry Year 2:</b> An HNC in an appropriate discipline. <b>Direct Entry Year 3:</b> An HND or equivalent in appropriate discipline. <b>Additional Information:</b> Portfolio is required, candidates will be interviewed.		
<b>Direct Entry Contact:</b> School Admissions Office T: 0141 331 3277 E: SECCourses@gcal.ac.uk		
BSc/BSc(Hons) <b>Information Technology Management for Business</b>	GN52	59
<b>Relevant HN Award for Entry:</b> Computing. <b>Direct Entry Year 2:</b> HNC Business Information Systems/Computing/Information Technology/Internet and Multimedia Design and Development/Multimedia/Computing: Web Development/Software Engineering – must have a total of 15 credits. <b>Direct Entry Year 3:</b> HND Business Information Systems/Technology/Information Technology (for Business)/Information Technology and Business Administration. <b>Additional Information:</b> Programme has an optional one year placement. <b>Direct Entry Contact:</b> School Admissions Office T: 0141 331 3277 E: SECCourses@gcal.ac.uk		
BSc/BSc(Hons) <b>Interactive Media Development (subject to validation)</b>	G440	60
<b>Relevant HN Award for Entry:</b> Contact the school for details. <b>Direct Entry Year 2:</b> An HNC in an appropriate discipline. <b>Direct Entry Year 3:</b> An HND or equivalent in an appropriate discipline. <b>Additional Information:</b> All candidates will be interviewed. <b>Direct Entry Contact:</b> School Admissions Office T: 0141 331 3277 E: SECCourses@gcal.ac.uk		



“ The things I enjoy most are the opportunities to meet new people, both in a university and work place environment, and also the opportunity to put the theory into practice. ”  
 Lauren Beck, Student, BEng (Hons) Mechanical Electronic Systems Engineering

## School of Engineering and Computing



award & programme title	UCAS code	page
BA/BA(Hons) <b>International Product Design</b>	W240	61
<b>Relevant HN Award for Entry:</b> HN or equivalent in Product Design or related course, DipHE Multimedia Visualisation with Product Design at Glasgow Caledonian University. <b>Direct Entry Year 2:</b> Year 2 of this degree is taught at FE College. <b>Direct Entry Year 3:</b> HND with Integrative Assessment B. <b>Additional Information:</b> Portfolio is required. Candidates will be interviewed. <b>Direct Entry Contact:</b> School Admissions Office T: 0141 331 3277 E: SECCourses@gcal.ac.uk		
BEng/BEng(Hons) <b>Manufacturing Systems Engineering</b>	H7H6	62
<b>Relevant HN Award for Entry:</b> Relevant Engineering subject. <b>Direct Entry Year 2:</b> HND or an HNC with Integrative Assessment B. <b>Direct Entry Year 3:</b> HND with Integrative Assessment B. <b>Direct Entry Contact:</b> School Admissions Office T: 0141 331 3277 E: SECCourses@gcal.ac.uk		
BEng/BEng(Hons) <b>Mechanical Electronic Systems Engineering</b>	H360	63
<b>Relevant HN Award for Entry:</b> Relevant Engineering subject. <b>Direct Entry Year 2:</b> HND or an HNC with Integrative Assessment B. <b>Direct Entry Year 3:</b> HND with Integrative Assessment B. <b>Direct Entry Contact:</b> School Admissions Office T: 0141 331 3277 E: SECCourses@gcal.ac.uk		
BEng/BEng(Hons) <b>Mechanical and Power Plant Systems</b>	HH32	64
<b>Relevant HN Award for Entry:</b> Appropriate Engineering subject <b>Direct Entry Year 2:</b> Not practicable. <b>Direct Entry Year 3:</b> Appropriate HND Mechanical Engineering, HND Marine Engineering, Integrative Assessment B. <b>Additional Information:</b> Contact Admissions Tutor for further information. <b>Direct Entry Contact:</b> School Admissions Office T: 0141 331 3277 E: SECCourses@gcal.ac.uk		
BSc/BSc(Hons) <b>Mechatronics</b>	HH63	65
<b>Relevant HN Award for Entry:</b> Mechatronics. <b>Direct Entry Year 2:</b> Year 2 of this degree is taught at FE College or at Glasgow Caledonian University. <b>Direct Entry Year 3:</b> HND Mechatronics, Integrative Assessment B. <b>Additional Information:</b> Mechatronics is a mix of electronics, mechanical and computer engineering. <b>Direct Entry Contact:</b> School Admissions Office T: 0141 331 3277 E: SECCourses@gcal.ac.uk		
BSc/BSc(Hons) <b>Networking and Systems Support</b>	G490	66
<b>Relevant HN Award for Entry:</b> HND Information Systems, HND Information and Media Technology, HND Information and Communications Technology, HND Computing (Technical Support or Software Development), HND Internetworking, HND Computer Technology, HND Computer Support and Systems Administration. <b>Direct Entry Year 2:</b> HNC Computing/Computer and Network Support/Computer Networks/Computer Support and Maintenance/Information Systems or Technology/Internet and Multimedia Design and Development/Multimedia Computing: Web Development/Software Engineering – must have a total of 15 credits. <b>Direct Entry Year 3:</b> HND Computer Network Support & Administration/Internet Technology/Computing - Technical Support/Internetworking. <b>Additional Info:</b> Programme has an optional one year placement. <b>Direct Entry Contact:</b> School Admissions Office T: 0141 331 3277 E: SECCourses@gcal.ac.uk		



“ Studying at GCU for the last four years has been an amazing and unforgettable experience. I know I made the right decision as I found the facilities to be superb and the teaching excellent. ”  
**Adnan Khan, Student, BSc (Hons) Telecommunications Engineering**

## Quick Reference Guide



### School of Health and Social Care (now part of the School of Health)

award & programme title	UCAS code	page
BSc(Hons) <b>Occupational Therapy</b>	B930	70
<b>Relevant HN Award for Entry:</b> Health Care, Social Care, Social Sciences and others will be considered. HND students also considered. <b>Direct Entry Year 2:</b> HNC in Occupational Therapy Support (Part-time). <b>Direct Entry Year 3 &amp; 4:</b> No direct entry to levels 3 & 4 due to Registration regulations. Level 4 now compulsory. <b>Additional Information:</b> Applicants must speak to an Occupational Therapist before applying to appreciate the demands of the role.		
<b>Direct Entry Contact:</b> Admissions Team T: 0141 331 8391 E: otadmissions@gcal.ac.uk		
BSc(Hons) <b>Physiotherapy</b>	B160	71
<b>Relevant HN Award for Entry:</b> Appropriate HND award will only be considered with the whole profile of the applicant for entry to Year 1. <b>Direct Entry Year 2:</b> No advanced entry possible. <b>Direct Entry Year 3:</b> No advanced entry possible. <b>Additional Information:</b> Students normally enter the degree at Year 1 and complete the whole four years. <b>Direct Entry Contact:</b> Admissions Team T: 0141 331 8132 E: physio.admissions@gcal.ac.uk		
BSc(Hons) <b>Podiatry</b>	B985	72
<b>Relevant HN Award for Entry:</b> Sports Therapy, Health & Fitness, Applied Bioscience and others considered on individual basis for entry to Year 1. <b>Direct Entry Year 2:</b> No advanced entry possible. <b>Direct Entry Year 3:</b> No advanced entry possible. <b>Direct Entry Contact:</b> Admissions Team T: 0141 331 8128 E: podadmissions@gcal.ac.uk		
BSc(Hons) <b>Radiography (Diagnostic Imaging Science or Radiation Oncology Science)</b>	B821/B822	73, 74
<b>Relevant HN Award for Entry:</b> Science & Bioscience courses. Preference given to HNC/Ds with high Physics content for entry to Year 1. <b>Direct Entry Year 2:</b> No advanced entry possible. <b>Direct Entry Year 3:</b> No advanced entry possible. <b>Additional Info:</b> Many Healthcare courses do not contain sufficient science for entry. Contact admissions staff for advice. <b>Direct Entry Contact:</b> Admissions Team T: 0141 331 8531 E: radadmissions@gcal.ac.uk		
BA(Hons) <b>Social Work</b>	L500	75
<b>Relevant HN Award for Entry:</b> HNC in a relevant area (eg social care, social sciences, child and education, counselling); accredited university access qualification (humanities, social care, social sciences); relevant Open University modules, Level 1. <b>Direct Entry Part 2:</b> Must demonstrate equivalence to Year 1. Enquiries to Admissions Team. <b>Direct Entry Part 2:</b> Must demonstrate equivalence to Years 1&2. Enquiries to Admissions Team. <b>Additional Information:</b> Candidates are required to have experience relevant to social care, to provide an appropriate work-based reference, academic reference and strong personal statement. Maths and English is required - Standard Grade 2 (or equivalent). <b>Direct Entry Contact:</b> Admissions Team T: 0141 331 3843 E: swadmissions@gcal.ac.uk		

**Please Note:** All School of Health Undergraduate programmes will consider certain University Access courses undertaken at named colleges. Applicants should contact Admissions Staff to determine which Access course is appropriate for their study area.

**Disclosure Scotland:** As a condition of entry to all health-related programmes, all students will be required to undergo an enhanced criminal disclosure procedure with Disclosure Scotland. Students should note that the criminal records will not be deemed as spent under the Rehabilitation of Offenders Act (1974) (ROA) (Exceptions) Order 1975. Consequently all convictions, no matter when they occurred will be included on the Disclosure. Potential students who wish to discuss issues relating to criminal convictions are strongly recommended to contact the relevant admissions tutor in the first instance.

“

I decided I wanted to do a course that leads to a profession where I was going to be working with people to support them in improving or maintaining their standard of living.”

Greg Young, Student, BSc (Hons) Occupational Therapy





## School of Law and Social Sciences

award & programme title	UCAS code	page
BA/BA(Hons) <b>Business Law</b>	M221	78
<p><b>Relevant HN Award for Level 1 Entry:</b> Business/Law related HNC is preferred, though not essential, as all HNC qualifications are considered for Level 1 entry.</p> <p><b>Direct Entry Year 2:</b> Comparable HND in relation to Programme Structure. <b>Direct Entry Year 3:</b> Not practicable due to structure of programme, please contact us to enquire. <b>Other Entry Qualifications:</b> Entry to Year 1 possible with relevant SWAP or other Access programme. <b>Direct Entry Contact:</b> School Recruitment &amp; Marketing Officer T: 0141 331 3256 E: buslaw@gcal.ac.uk</p>		
BA/BA(Hons) <b>Criminology</b>	M211	79
<p><b>Relevant HN Award for Level 1 Entry:</b> Social Sciences or related HNC, SWAP or Access programme. <b>Direct Entry Year 2:</b> Normally successful completion of HND. Criminology element essential. (Specific grades may be required). <b>Direct Entry Year 3:</b> Not practicable. <b>Additional Information:</b> Limited places available. Attendance at interview and sample of written work may be required. <b>Direct Entry Contact:</b> School Recruitment &amp; Marketing Officer T: 0141 331 3256 E: criminology@gcal.ac.uk</p>		
LLB/LLB(Hons) <b>Bachelor of Laws</b>	M114	80
<p><b>Relevant HN Award for Level 1 Entry:</b> Normally, HND Legal Services with 10 merits or AA Integrative Assessment. <b>Direct Entry Year 2/3:</b> Not practicable. <b>Other Entry Qualifications:</b> Normally, Pre-entry Certificate with 55% minimum pass or Law Access course with BBBC grades (BB in Law). <b>Additional Information:</b> Attendance of Interview and sample of work may be required. <b>Direct Entry Contact:</b> School Recruitment &amp; Marketing Officer T: 0141 331 3256 E: llb@gcal.ac.uk</p>		
BA/BA(Hons) <b>Social Sciences</b>	L000	81
<p><b>Relevant HN Award for Level 1 Entry:</b> Social Sciences. HNC Social Care plus 4 merit passes or C graded unit(s) or HNC Social Sciences for level one entry. Other HNC qualifications may be accepted. <b>Direct Entry Year 2:</b> Successful completion of HND Social Sciences or HNC with BB graded units. <b>Direct Entry Year 3:</b> Normally successful completion of HND with 5 merits or BB graded units. <b>Other Entry Qualifications:</b> Relevant SWAP programme with BBB overall or other relevant Access programme. <b>Additional Information:</b> Limited places available for Level 2 and 3 entry. Attendance at interview and sample of written work may be required. <b>Direct Entry Contact:</b> School Recruitment &amp; Marketing Officer T: 0141 331 3256 E: socsciences@gcal.ac.uk</p>		

**Note: Year One Entry:** Whilst this publication indicates where a Higher National course can access the upper years of programmes at Glasgow Caledonian, we welcome applications to the first year of all of our programmes from students who are studying a relevant Higher National course at College. Please contact the university for more details.

“

The campus has a lively feel about it and I enjoyed making new friends with similar interests.

Fiona McHardy, Graduate, BA (Hons) Social Sciences



”

## Quick Reference Guide



### School of Life Sciences

award & programme title	UCAS code	page
BSc <b>Biological Sciences</b>	B121	84
<b>Relevant HN Award for Entry:</b> An appropriate Science subject. <b>Direct Entry Year 2:</b> HNC with a minimum of 15/16 credits, which will include at least 2 merit passes or grade B in the graded unit. <b>Direct Entry Year 3:</b> Contact Admissions Tutor. <b>Direct Entry Contact:</b> Jim Reilly T: 0141 331 3403 E: j.reilly@gcal.ac.uk		
BSc/BSc(Hons) <b>Biomedical Science</b>	B940	85
<b>Relevant HN Award for Entry:</b> An appropriate Science subject. <b>Direct Entry Year 2:</b> HNC with a minimum of 15/16 credits, which will include at least 2 merit passes or grade B in the graded unit. <b>Direct Entry Year 3:</b> HND including at least 5 merit passes. <b>Direct Entry Contact:</b> Jim Reilly T: 0141 331 3403 E: j.reilly@gcal.ac.uk		
BSc/BSc(Hons) <b>Cell and Molecular Biology</b>	C760	86
<b>Relevant HN Award for Entry:</b> An appropriate Science subject. <b>Direct Entry Year 2:</b> HNC with a minimum of 15/16 credits including at least 2 merit passes or grade B in the graded unit. <b>Direct Entry Year 3:</b> HND including at least 5 merit passes. <b>Direct Entry Contact:</b> Jim Reilly T: 0141 331 3403 E: j.reilly@gcal.ac.uk		
BSc/BSc(Hons) <b>Food Bioscience</b>	D611	87
<b>Relevant HN Award for Entry:</b> Food Science (with appropriate content). <b>Direct Entry Year 2:</b> HNC with a minimum of 15/16 credits, which will include at least 2 merit passes or grade B in the graded unit. <b>Direct Entry Year 3:</b> HND including at least 5 merit passes. <b>Direct Entry Contact:</b> Richard Tester or Kofi Aidoo T: 0141 331 8514/8014 E: r.f.testergcal.ac.uk or k.aidoo@gcal.ac.uk		
BSc/BSc(Hons) <b>Forensic Investigation</b>	F410	88
<b>Direct Entry Year 2:</b> Not practicable. <b>Direct Entry Year 3:</b> Not practicable. <b>Additional Info:</b> Please contact the school for further information <b>Direct Entry Contact:</b> Duncan Fortune T: 0141 331 3600 E: bioadmissions@gcal.ac.uk		
BSc/BSc(Hons) <b>Human Biology with Sociology and Psychology</b>	CL03	89
<b>Relevant HN Award for Entry:</b> An appropriate Science subject. <b>Direct Entry Year 2:</b> HNC with a minimum of 15/16 credits, which will include at least 2 merit passes or grade B in the graded unit. <b>Direct Entry Year 3:</b> Not practicable. <b>Direct Entry Contact:</b> Jim Reilly T: 0141 331 3403 E: j.reilly@gcal.ac.uk		
BSc/BSc(Hons) <b>Human Biosciences</b>	B120	90
<b>Relevant HN Award for Entry:</b> An appropriate Science subject. <b>Direct Entry Year 2:</b> HNC with a minimum of 15/16 credits, which will include at least 2 merit passes or grade B in the graded unit. <b>Direct Entry Year 3:</b> HND including at least 5 merit passes. <b>Direct Entry Contact:</b> Jim Reilly T: 0141 331 3204 E: j.reilly@gcal.ac.uk		
BSc/BSc(Hons) <b>Human Nutrition and Dietetics</b>	B400	91
<b>Direct Entry Year 3:</b> All such entries are dealt with on an individual basis. <b>Direct Entry Contact:</b> Pam Smith T: 0141 331 8519 E: dietetics@gcal.ac.uk		
BSc/BSc(Hons) <b>Microbiology</b>	C510	92
<b>Relevant HN Award for Entry:</b> An appropriate Science subject. <b>Direct Entry Year 2:</b> HNC with a minimum of 15/16 credits, which will include at least 2 merit passes or grade B in the graded unit. <b>Direct Entry Year 3:</b> HND including at least 5 merit passes. <b>Direct Entry Contact:</b> Jim Reilly T: 0141 331 3403 E: j.reilly@gcal.ac.uk		
BSc <b>Ophthalmic Dispensing</b>	B502	93
<b>Relevant HN Award for Entry:</b> HNC, Btech or Access courses in appropriate science subjects may be considered for entry to Level 1. <b>Direct Entry Year 2:</b> No advanced entry possible. <b>Direct Entry Year 3:</b> No advanced entry possible. <b>Direct Entry Contact:</b> Admissions Tutor T: 0141 331 3695 E: optometryadmissions@gcal.ac.uk		
BSc/BSc(Hons) <b>Optometry</b>	B510	94
<b>Relevant HN Award for Entry:</b> A Science related subject, preferably physics based, will be considered for entry to Year 1. <b>Direct Entry Year 2:</b> An approved qualification in Ophthalmic Dispensing. <b>Direct Entry Year 3:</b> Some overseas Optometric Degrees are acceptable. <b>Direct Entry Contact:</b> Admissions Tutor T: 0141 331 3299 E: optometryadmissions@gcal.ac.uk		



I wanted to study in Glasgow and, after visiting three universities, I thought that Caledonian had the most student orientated atmosphere.

Nia Walker, Student, BSc (Hons) Psychology





## School of Life Sciences

award & programme title	UCAS code	page
BSc/BSc(Hons) <a href="#">Pharmacology</a>	B210	95
<p><b>Relevant HN Award for Entry:</b> An appropriate Science subject. <b>Direct Entry Year 2:</b> HNC with a minimum of 15/16 credits, which will include at least 2 merit passes or grade B in the graded unit. <b>Direct Entry Year 3:</b> HND including at least 5 merit passes. <b>Direct Entry Contact:</b> Jim Reilly T: 0141 331 3403 E: j.reilly@gcal.ac.uk</p>		
BSc/BSc(Hons) <a href="#">Psychology</a>	C800	96
<p><b>Relevant HN Award for Entry:</b> HNC in Science or Social Sciences with 4 merits or Integrative Assessment grades BB or Graded Unit B. <b>Direct Entry Year 2:</b> HNC Social Sciences with 8 merits including Psychology modules or Integrative Assessment grade AA or Graded Unit A. HND Social Sciences with four merits in Year 2 including Psychology modules or Integrative Assessment grades BB in Year 2 or Graded Unit B in Year 2. <b>Direct Entry Year 3:</b> HND Social Sciences with 8 merits in Year 2 including Psychology modules or Integrative Assessment grades AA in Year 2 or Graded Unit A in Year 2.</p> <p><b>Direct Entry Contact:</b> Admissions Tutor T: 0141 331 3119/8564 E: psychologyadmissions@gcal.ac.uk</p>		



Within the department, there are so many sources of advice to help with your coursework. The staff are always available to answer any questions.

Jas Sangha, Graduate, BSc (Hons) Human Biology with Sociology and Psychology



## Quick Reference Guide



### School of Nursing, Midwifery and Community Health (now part of the School of Health)

award & programme title	UCAS code	page
DipHE <b>Bachelor of Midwifery</b> / PgD <b>Midwifery Studies</b>	B720	100
<b>Relevant HN Award for Entry:</b> No advanced entry possible to this Diploma/Degree programme. <b>Direct Entry Contact:</b> Louise Speirs T: 0141 331 8646 E: midwifery@gcal.ac.uk		
DipHE <b>Nursing/Bachelor of Nursing</b>	B740, B730, B760, B761	101
<b>Relevant HN Award for Entry:</b> Most subjects plus equivalent of Standard Grade English and Maths for entry to Year 1 <b>Direct Entry Years 2/3:</b> No advanced entry possible. <b>Direct Entry Contact:</b> John Murray T: 0141 331 3903 E: john.murray@gcal.ac.uk		
BA(Hons) <b>Nursing Studies RN</b>	B700	102
<b>Relevant HN Award for Entry:</b> Health/Social Care (pure science content) Applied Sciences or Social Sciences for Year 1 entry. <b>Direct Entry Year 2:</b> No advanced entry possible. <b>Direct Entry Year 3:</b> No advanced entry possible. <b>Direct Entry Contact:</b> Angela Miller T: 0141 331 3468 E: angela.miller@gcal.ac.uk		
DipHE <b>Operating Department Practice</b>	B990	103
<b>Relevant HN Award for Entry:</b> No advanced entry possible to this diploma programme. <b>Direct Entry Contact:</b> Claire Lewsey T: 0141 331 8345 E: claire.lewsey@gcal.ac.uk		

**Note: Year One Entry:** Whilst this publication indicates where a Higher National course can access the upper years of programmes at Glasgow Caledonian, we welcome applications to the first year of all of our programmes from students who are studying a relevant Higher National course at College. Please contact the university for more details.

**Disclosure Scotland:** As a condition of entry to all health-related programmes, all students will be required to undergo an enhanced criminal disclosure procedure with Disclosure Scotland. Students should note that the criminal records will not be deemed as spent under the Rehabilitation of Offenders Act (1974) (ROA) (Exceptions) Order 1975. Consequently all convictions, no matter when they occurred will be included on the Disclosure. Potential students who wish to discuss issues relating to criminal convictions are strongly recommended to contact the relevant admissions tutor in the first instance.

“

I have always wanted to do nursing and the course offered here stood out from the others. The fact that GCU seemed so modern and upbeat made it my number one choice.”

Christine Paterson, Student, BA (Hons) Nursing Studies



## BA/BA (Hons) by Work Based Learning



Glasgow Caledonian University has developed Work Based Learning modules to allow a holder of a Higher National Diploma or equivalent to complete a degree (un-named) in as little as 12 months, through linking academic studies to learning in the workplace. Workshops are held on evenings at the city centre campus.

This programme is work-based so students must be employed.

### Why Caledonian?

The programme is currently unique to Scotland in offering a work based learning route to achieving an undergraduate degree. It is designed to improve the learning and development skills that can contribute to both your personal development and to your work. These skills will also enable you to design and complete an Integrated Work Based Project relating to your role at work. Throughout the programme, students play a major role in designing their own assessments based upon work activities.

The BA by Learning Contract offers a top-up programme from HND to degree level. Modules will be delivered by a mixture of structured tutorials, workshops, supported study and work-based and online activities. This programme is delivered on Tuesday evenings, two modules at a time.

### Entry requirements:

HND or equivalent. Please contact the Programme Administrator for details of specific entry requirements.

**Assessment:** A combination of coursework and exams.

**Number of places:** 20.

**Mode of study:** Part-time.

### Contact: Caroline Tuff

E: [c.tuff@gcal.ac.uk](mailto:c.tuff@gcal.ac.uk)

T: +44 (0)141 273 1277

[www.gcal.ac.uk/scwbl](http://www.gcal.ac.uk/scwbl)

**What you'll learn:** The programme is made up of six work based learning modules: Personal and Professional Development through Work Based Learning, Learning and Development; Organisational Issues in Practice, Learning and Development; People Issues in Practice, Learning and Development; Change Issues in Practice, Learning and Development; Quality Issues in Practice, The Integrated Work Based Learning Project.

**Note:** You need to be in full or part-time employment with access to email.

**Note:** This is a unique programme, designed specifically for HND holders in employment who wish to top up their diploma to a degree, providing real benefits to both student and employer.

“ This is a unique programme, designed specifically for HND holders in employment who wish to top up their diploma to a degree, providing real benefits to both student and employer. ”



Applying to University  
Accommodation  
Open Days  
Student Finance  
Subject Choices  
University Life

**You  
choose**

[caledonianchoices.com](http://caledonianchoices.com)

**caledonianchoices.com**

Caledonianchoices.com helps you prepare for life as a university student. The site also contains helpful information for parents on a variety of issues relating to university study, including student finance and moving away from home. Find out more about joining our multi-cultural community by visiting our campus or website:

[www.caledonianchoices.com](http://www.caledonianchoices.com)

 **GLASGOW  
CALEDONIAN  
UNIVERSITY**



### The year prior to starting university

**June:** You should be beginning to research the programmes and careers you are interested in, with the help of a Careers Adviser if you are at college. At this stage you should think about the universities you are interested in and find out the dates of their Open Days.

**August:** Regional careers conventions are held throughout Scotland, beginning in August and continuing throughout September. University representatives will be there to answer questions, so you should talk to staff and gather as much information as you can on all the universities and programmes in which you are interested.

**September:** During September and the following few months, you should be attending the open days of the universities you would like to apply to. Only by visiting campuses will you get a real 'feel' for the university and the city, as well as the city, has to be just as right for you as the programme of study. Glasgow Caledonian's annual Open Day is usually held during the second week of September. In 2009, it will be held on September 9th.

**October:** Most schools will have you well on the way to completing your application forms at this stage. Make sure you work to the deadlines set by your Careers Adviser.



### The year of entry to your programme

**January:** The deadline for applications is 15th January of the year of entry. You will receive acknowledgement of your application from our Admissions Office, as well as further information about the admissions process.

**February:** Throughout the spring months, you will receive replies from all of the universities to which you have applied. Each one will state if the application has been successful or rejected, or what additional exam results may be required to secure a place in a conditional offer.

You may also be invited to attend an interview or information session at the university to find out a bit more about what's involved in your chosen programmes. UCAS will issue you with a deadline by which time you must make your final selection.

You can make additional applications through UCAS Extra from 26th February of the year of entry. Visit [www.ucas.com/students/afteryouapply/extra](http://www.ucas.com/students/afteryouapply/extra) for more information.

**May/June:** You will be preparing to sit your exams and await the results.

**August:** If you are at college, you must send your exam results to the Admissions Office. If you don't get the results required for entry to your preferred choice, UCAS will issue you with information about the Clearing process. We run a Clearing website ([www.gcal.ac.uk/clearing](http://www.gcal.ac.uk/clearing)) and a helpline (0800 027 9171 or [enquiries@gcal.ac.uk](mailto:enquiries@gcal.ac.uk)), from the day school exam results are available.

**September:** You will start Semester A of your programme around mid-September.



### Contact

**UCAS Customer Services**  
PO Box 28  
Cheltenham, GL52 3LZ  
T: +44 (0)871 468 0468  
E: [enquires@ucas.ac.uk](mailto:enquires@ucas.ac.uk)  
[www.ucas.com](http://www.ucas.com)



You will not only leave university with a degree - you will take with you a set of life skills that are invaluable to anyone.

Marc, 4th year student



## How to apply

At Glasgow Caledonian University, we aim to give applicants and advisers as much support as possible. The following is a selection of frequently asked questions about applying to university.

### Do universities have their own application forms?

No, when applying to university in the UK, for full-time undergraduate courses, you must make your application through UCAS – the Universities and Colleges Admissions Service. You must make your application via the UCAS online Apply system. UCAS will then send it around the individual institutions on your behalf.

Remember, you will need the university's code (GCAL G42) and the course code of the programme to which you are applying (you'll find this on the relevant programme page in this prospectus).

### When do I apply?

The deadline for UCAS applications is January 15 of the year you hope to start your programme. Applications received after this date will be considered as late.



### How many choices can I make?

You can make any combination of up to five choices on your application form. The application fee is currently £17 or £7 if you are only applying for one programme.

### I'm at FE College, how do I apply for advanced entry?

The year of entry should be made clear in the 'choices' section of the UCAS Apply electronic application. When applying to year one of a programme, this box should be left blank. For entry into the second or third year of a programme, you should enter the year in this box. For example, if you are applying to start in Year 2, put 2 in the box.

### What should I include in the personal statement?

You should explain your reasons for applying to a particular programme and convey a knowledge and enthusiasm for what the programme involves. Do you have work experience? For certain programmes, particularly career-focused programmes, relevant work experience is essential. Other work experience, such as a part-time job, can equip you with skills such as good communications and teamworking.

Definitely mention your career aspirations. Where do you want to go after graduation? What type of job do you want? Will you want to undertake further study? We also suggest that you add a little bit about your extra-curricular activities and any other achievements (e.g. sports) or responsibilities (e.g. School Captain).

“ Our 2009 Open Day will take place on Wednesday 9th September 09. To find out more visit [www.gcal.ac.uk/openday](http://www.gcal.ac.uk/openday) ”



### Will the universities know which other institutions I have applied to?

Each university will only have the details of the course(s) you have applied to at that institution. They will not know your other choices until much later in the application process.



### What happens after I have submitted my application?

When UCAS have received your application, they will forward it on to the institution to which you are applying. Admissions staff will consider your application and UCAS will tell you if your application has been successful or not. Each university you have applied to will respond. You will then have to narrow down your choices to two – a firm acceptance and an insurance acceptance.



### I am an international student, how do I enter my qualifications?

You should enter your qualifications in English through the on-line UCAS Apply system. Send a copy of your certificates, with a note of your UCAS number, directly to the university. Please don't send UCAS original exam certificates.



### I would like to study part-time. How do I apply?

Provided you are able to study your preferred programme on a part-time basis, you should apply to the university directly. Visit [www.gcal.ac.uk/study/part-timedegrees/howtoapply](http://www.gcal.ac.uk/study/part-timedegrees/howtoapply) to find out more.

### How can I apply for deferred entry?

Some students choose to apply for a university programme one year in advance, with the intention of taking some sort of a 'gap' year before they start. It's always advisable to speak with Admissions Tutors for advice before applying for deferred entry. You should indicate your deferred entry choice in the 'choices' section of UCAS Apply system, ticking the 'Deferred Entry' box.

### Do I have to accept the offers made to me?

If you don't wish to accept any of the other offers made to you, you can decline them. UCAS Extra now allows you to make further choices, if you didn't receive any offers or if you've declined offers made to you. UCAS Extra applications can be made on-line, just like standard UCAS applications. The on-line system also allows you to monitor university responses to the applications you make.



### I have been working for a number of years and have older qualifications which are no longer offered. Are my qualifications and experience recognised?

We recognise that you can acquire knowledge and skills from a whole range of learning experiences, formal and informal. Our mission to 'provide flexible life-long learning opportunities' to students from a wide variety of backgrounds and at different stages of life means we are pleased to receive your application if you have non-traditional credited or experiential merits. Contact the Admissions Tutor, as named on each programme page, for further details.

### What's Clearing?

Clearing takes place in August when all of the exam results have been published. If you haven't managed to secure a university place, clearing information will be forwarded to you by UCAS. You can then apply to institutions that are still accepting applications.

### Do I apply for nursing and midwifery programmes through CATCH?

No. For September 2010-entry, applications for Nursing and Midwifery programmes must be made through UCAS.

### Can I visit the university to have a look around?

Most universities hold open days at various times of the year. This gives you the opportunity to meet with staff to discuss your options and to ask any questions you may have. We usually hold our open day during the second week in September each year. If you can't attend the Open Day, most universities are happy to arrange for you to visit at a mutually convenient time. Contact [helpline@gcal.ac.uk](mailto:helpline@gcal.ac.uk) if you'd like to arrange a campus tour.

[www.gcal.ac.uk/openday](http://www.gcal.ac.uk/openday)

### Contact

The Admissions Office  
E: [admissions@gcal.ac.uk](mailto:admissions@gcal.ac.uk)  
T: +44 (0)141 331 3334

CATCH  
T: +44 (0)131 226 7371

SAAS  
T: +44 (0)845 111 1711  
W: [www.saas.gov.uk](http://www.saas.gov.uk)

UCAS  
T: +44 (0)871 468 0468  
W: [www.ucas.ac.uk](http://www.ucas.ac.uk)

“ I enjoy being part of such a popular university and meeting so many amazing people! ”  
Christine, 3rd year student

## Learning resources



### The Saltire Centre

The Saltire Centre is a state-of-the-art facility designed to support your learning while you study. It is home to the university library which includes over 350,000 books. Gaining access to over 12,000 journals is easy – and most of them are also available online. On any floor with an exit you will find a 'self-issue and return' point or, alternatively, students can visit the loans desk at The Base.

With 1,800 study spaces, the Saltire Centre gives you plenty of room to learn and it offers 500 computers for student use. A wireless network means you can use your own laptop anywhere in the building, or borrow one of the 150 university laptops available to everyone.

The different areas of the centre mean that you can take advantage of noisy social interaction areas for group work, but also settle down to silent study on the upper floors. The open-plan learning spaces are similar to modern office environments, which will help you to prepare for moving into a professional environment after graduating. The Saltire Centre is also wheelchair friendly throughout, with software and technology for students with learning or physical disabilities available in a central location.

In the student services mall, you'll find many other facilities that you'll need as a student, including careers guidance, funding information, our counselling service, academic registry, disability services, international advisory support, the chaplaincy and the nursery. Saltire Centre staff are very friendly and open and will be happy help you find the information or support you require.

### Continuing Professional Development Centre

The latest addition to our campus, the Continuing Professional Development (CPD) Centre opened its doors in early 2007, offering a flexible space for both business and study. In addition to providing modern, state-of-the-art seminar rooms for students, the high-tech conference space offers facilities for local, national and international businesses and organisations.

### Real Learning Cafés

Our Real Learning Cafés can be found on the ground floors of both the Saltire Centre and the Continuing Professional Development Centre (next to John Smith's campus bookshop). Both are ideal for some relaxed study; you can go online, work on essays or just have a coffee or snack and catch up with friends.

“ The Saltire Centre provides not only a fantastic and unique study space, but also a nice environment to catch up with friends between classes. ”  
Sarah, 1st year student

At Glasgow Caledonian we provide a comprehensive range of services for students, including our state-of-the-art learning facility, the Saltire Centre. This includes our interactive learning café and student services mall, through to educational services such as our Summer School, Effective Learning and ICT Skills Support. We also provide innovative ways of learning, such as Work-Based Learning and Blackboard Virtual Learning Environment, and offer advice to anyone seeking wider access to higher education with non-traditional entry qualifications.



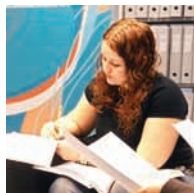
### Effective Learning Service

Our Effective Learning Service (ELS) is here to help you cope with the practical aspects of your new workload and achieve your academic potential. Wondering how to take helpful lecture notes or structure an effective essay? What about projects, dissertations, oral presentations and preparing for exams? We offer workshops designed to address these issues and more, and with additional face-to-face and online support and handouts on the various study skills, we're here to assist. Feel free to make an appointment or drop in to see us in the Saltire Centre for an advisory chat.



### Scottish Wider Access Programme (SWAP)

If you don't have the normal entry requirements for degree level study, successful completion of an Access programme may guarantee you entry to specified degree programmes at college or university.



### IT facilities

During semester you have access to computers throughout campus seven days a week. These can be found in the Saltire Centre, learning cafés and specialised teaching labs to name but a few locations. Off campus you can log onto your webmail account, 'my.caledonian', to access university information, exam results and to apply for modules. 'my.caledonian' keeps you on top of lecture notes and lets you know if your timetable changes. It's also an ideal discussion forum for any points you want to bring to others attention. You may also find that your programme is supported by our virtual learning environment 'Blackboard'. Similarly, this system is ideal for accessing learning material, staying up to speed with classes and keeping in touch with lecturers and other students.

### Non-Traditional Student Entry

Glasgow Caledonian University has a distinctive role in Scottish higher education, providing flexible lifelong learning opportunities to students from a wide variety of backgrounds and at different stages of their lives. The university's commitment to widening access is long-standing and the university is proud of its success. It is among the top universities in the UK for the percentage of students drawn from under-represented areas and it continues to set itself stretching targets in that regard. It has an extensive network of relationships with further education colleges, including several recently re-affirmed or newly developed formal memoranda of collaboration. Overall, the university seeks to extend equal opportunities by encouraging all sectors of society to participate in higher education and to achieve their full potential.

### Information and Communications Technology (ICT) Support

You can get help and advice in using the IT facilities at your disposal from the ICT Skills Unit. The ICT Skills Unit also has a non-compulsory module which you can undertake to gain recognition for basic IT achievement.

### Disability Service

We welcome and encourage applications from students with disabilities. It's our aim to make sure you can access your programme and participate in university life as equally and actively as possible, through flexible teaching and assessment, and by improving access to buildings and technology. For advice and support we encourage you to make contact with our disability service. Staff will be available to answer any questions you may have and help you find out more about the support services on offer. We can assist in organising needs assessments and in making you aware of financial assistance.

“ The facilities are excellent and, most importantly, accessible to all without any sense of intimidation often found in other similar large institutions. ”

Scott, 3rd year student

## How to get in touch



### Contact

#### Schools and Colleges Liaison

The Schools and Colleges Liaison service aims to support applicants and advisers by providing information and advice on a comprehensive range of topics.

E: [helpline@gcal.ac.uk](mailto:helpline@gcal.ac.uk)

T: +44 (0)141 331 8681

F: +44 (0)141 331 8685

#### International Students

Glasgow Caledonian University has an ever growing international population with students from over 100 countries. For further information contact:

**International Desk,  
Glasgow Caledonian University,  
Cowcaddens Road,  
Glasgow G4 0BA, Scotland,  
United Kingdom.**

E: [international@gcal.ac.uk](mailto:international@gcal.ac.uk)

T: +44 (0)141 331 8675

F: +44 (0)141 331 8676

#### International Admissions

(Address as above)

E: [internationaladmissions@gcal.ac.uk](mailto:internationaladmissions@gcal.ac.uk)

T: +44 (0)141 331 8525

Our university website has pages dedicated to students currently studying at a further education college who are looking to apply to degree programmes at Glasgow Caledonian University.

### Our website

The university website, [www.gcal.ac.uk](http://www.gcal.ac.uk), has many valuable integrated features. Our programme search facility allows you to identify what programmes may be best suited to you and what the entry requirements are. More specific information for college based applicants can be found at

[www.caledonianchoices.com](http://www.caledonianchoices.com)

### When do I apply?

The university helpline exists to provide you with information on our wide range of undergraduate, postgraduate and part-time programmes. Staff are on hand to deal with your queries and send you the most relevant information to meet your needs.

If your query is very specific our staff will ensure you are put through to the most appropriate person. So, to find out which Glasgow Caledonian programme could be for you, phone our university helpline on 0141 331 8681.

### Visit the open days

The university holds its undergraduate open day at the beginning of September each year. This event is an excellent opportunity to visit our campus and view our many facilities. Admissions staff from all seven schools will be on hand to offer advice on the programme that interests you. During the busy time of Clearing, the university sometimes holds admission days, which take place to inform you of the programmes that are still accepting applications. If you have the correct qualifications you can secure a place on the day. For further details phone the university helpline.

“ Our 2009 Open Day will take place on Wednesday 9th September 09. To find out more visit [www.gcal.ac.uk/openday](http://www.gcal.ac.uk/openday) ”



Glasgow Caledonian University,  
Cowcaddens Road,  
Glasgow G4 0BA,  
Scotland.

T: **+44 (0)141 331 3000**

F: **+44 (0)141 331 3005**

**[www.gcal.ac.uk](http://www.gcal.ac.uk)**