



School of the Built & Natural Environment

## Capita Symonds

**“We have always maintained that the quality of project management services we provide is dictated by the quality of our staff. We at Capita have employed a number of post-graduates from the Construction Management programme at Glasgow Caledonian University and have been delighted by the quality of the people.”**

### **School of the Built & Natural Environment**

Glasgow Caledonian University  
Cowcaddens Road, Glasgow G4 0BA

T: **+44 (0)141 331 3170**

E: **schoolbne@gcal.ac.uk**

W: **www.caledonian.ac.uk/bne**

## School Profile

The School of the **Built and Natural Environment** at Glasgow Caledonian University is the **largest** in Scotland, and one of the **leading schools** of its kind in the UK. The School was **rated top** for the **quality** of its degree programmes in Scotland (Guardian Newspapers 2008), and in the UK Research Assessment Exercise (RAE 2008) **85%** of its output was rated as of international standard, much of it **‘world leading’** or **‘internationally excellent’**.

## International Profile

At Glasgow Caledonian University we provide award-winning support for all of our international students. At the prestigious Times Higher Education Awards we took first place for the outstanding support we provide to our overseas students, which was described as ‘first class’. The university was also rated the UK’s best international student experience in the International Student Barometer survey, where it was named the top university in Scotland for learning, living and support.

At the School of the Built and Natural Environment, providing excellent support is central to our mission.





## Themes of the Programme

The degree prepares students for an international management career in organizations which achieve their goals through the successful management of projects. In addition to gaining specialized knowledge in Project Management and associated subjects, students are taught innovative management skills that will enable them to manage a range of projects in a variety of cultural and socio-economic settings around the world.

A number of the School's Professors are involved in the delivery of this programme, and collectively the teaching team has experience of delivering project management expertise spanning all five continents and embodies significant national and international standing.

## Accreditation

The programme is accredited by the Royal Institution of Chartered Surveyors (RICS).

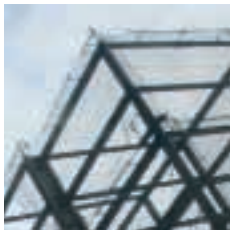
## Industry Links

This programme was developed in conjunction with companies across all sectors of energy-related industries. This ensures that graduates obtain precisely the skills and knowledge that employers want, thereby leading to very high prospects of employment at the end of the programme.

## Learning, Teaching and Assessment

Various methods of assessment are used appropriate to the modules' themes. These include written examinations, course work, and oral presentation. Normally there is more than one assessment component in each module.

Please note that a minimum mark of 35% in each assessment component and an overall mark of 40% or above is required to pass a module. The overall pass mark for the MSc Project is 50%.





## Programme Structure

Core and optional modules:

**PgC: 4 modules**

**PgD: 8 modules**

**MSc: 8 modules and the Dissertation**

**Core modules:** Integration and Scope Management  
Project Management  
Research Methods  
Dissertation

**Plus 5 electives from:** The Management of Health and Safety in Construction  
Value Management  
Construction Organizations and Project Practices  
Sustainable Design and Construction  
International Construction Dispute Resolution  
Construction Markets and Procurement  
Strategic Management in Construction and Property  
Managing the Construction Process  
Project and Development Risk  
International Construction Project Finance  
Contract Administration

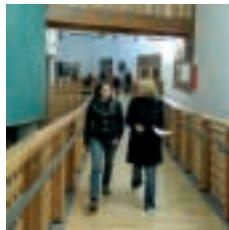
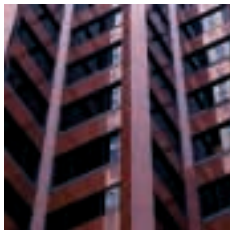
## Programme Content: Core & Optional Modules

### Research Methods

Examines the pros and cons of qualitative and quantitative research methodologies and introduces students to the key terms, concepts and principles of construction research design and the use of appropriate statistical analysis.

### The Management of Health and Safety in Construction

Reviews the Health and Safety legislative framework within which construction work is conducted. The emphasis is on studying the fundamental principles of risk management upon which the legislation is based.



**Value Management**

Examines the practice of value management and value engineering internationally, including the use of teams and facilitation, the discovery and structuring of information, functional analysis, creativity and evaluation methodologies.

**Construction Organisations and Project Practices**

Introduces the student to the key concepts in Construction and Property enterprise management and helps to consolidate knowledge gained by entrants coming from a variety of professional backgrounds within the construction and property industry.

**Sustainable Design and Construction**

Provides students with knowledge and understanding of the principles of sustainable design and construction and introduces the main requirements, technologies, tools, methods, processes and systems required to develop a sustainable building.

**Integration and Scope Management**

Covers all aspects of project plan development and execution, including evaluating and choosing the right methods, time management, activity definition and sequencing, the impact of local cultures and contexts, and how best to integrate all of these factors.

**International Construction Dispute Resolution**

Considers how failures have occurred in respect to conflict in construction and proceeds to discuss methods for the management of conflict and the means of resolving disputes, from an international perspective.

**Project Management**

Examines project management concepts, the roles and responsibilities of project managers and organizational structures within which project management operates.

**Construction Markets and Procurement**

Provides an analysis of the UK economy and the construction industry, and examines overseas procurement methods and the influence of globalization.

**Strategic Management in Construction and Property**

Offers an insight into the strategic decision-making processes necessary for organizations to establish and meet organizational goals. It also examines various types of strategies and how they may be successfully utilized.

**Managing the Construction Process**

Deals with how the process of construction operates and considers how the industry attempts to meet the needs of its customers.

**Project and Development Risk**

Examines the management of risk on international construction projects, including analysis of the management of physical, financial and contractual issues using hypothetical and live projects to place the topic in context.

**International Construction Project Finance**

Examines the financial management from bid preparation to contract financing, with particular emphasis on capital investment decisions and cash flow management, all within the context of international construction projects.

**Contract Administration**

Focuses on the critical appraisal and application of contract administration for construction projects. This includes the analysis and evaluation of approaches to the selection of appropriate procurement strategies for international construction projects.

**Dissertation**

The Master's Dissertation provides an opportunity to undertake an in-depth investigation, with a strong emphasis on originality and analysis. The Dissertation may be based on any part of the syllabus of the programme. However, demonstration of knowledge of other topics within the subject area of the programme must also be evidenced as appropriate.



## How do you apply?

- You can find out more about the application process and download a postgraduate application form online:  
[www.gcal.ac.uk/study/postgraduate/programmes/how-to-apply](http://www.gcal.ac.uk/study/postgraduate/programmes/how-to-apply)
- International students can find out more about the application process here:  
[www.gcal.ac.uk/study/international/howtoapply/index](http://www.gcal.ac.uk/study/international/howtoapply/index)

## Study Routes

The programme can be studied on a full-time and part-time basis. You can also study online by the distance-learning route. Web-based technology is fully exploited to ensure that students have flexible access to course materials and can interact with other students and with staff. There are two entry points each academic session: September and February.

## Fees/Contracts

Please check the university website for up-to-date information regarding fees:

[www.gcal.ac.uk/student/money/fees/postgrad](http://www.gcal.ac.uk/student/money/fees/postgrad)

Funding may be available for EU students through the Students Awards Agency for Scotland (SAAS).

## Entry Requirements

An Honours degree (grade 2.ii or above) or equivalent is required. It is highly recommended that applicants should have previous work experience in the construction or property industry. International applicants are also required to obtain an IELTS minimum of 6.0 or equivalent.

It is expected that part-time and distance learning students completing the programme would be in employment in a post relevant to the content of the degree. Entry requirements for mature candidates will be subject to their having relevant experience and previous qualification.



**School of the Built & Natural Environment**

Glasgow Caledonian University  
Cowcaddens Road, Glasgow G4 0BA

T: **+44 (0)141 331 3170**

E: [schoolbne@gcal.ac.uk](mailto:schoolbne@gcal.ac.uk)

W: [www.caledonian.ac.uk/bne](http://www.caledonian.ac.uk/bne)